




2019 North Meadow Butterfly ID Chart

Use these two charts to help identify the butterflies you can expect to see on North Meadow this summer. All of these butterflies are meadow and long grass dwellers, and many depend upon nettles, brambles and thistle for breeding and foraging.

We would love to hear your reports and see photo's of sightings on our Facebook page  Natural Goldsworth



Holly Blue



Common Blue



Brimstone



Purple
Hairstreak



Cinnabar Moth



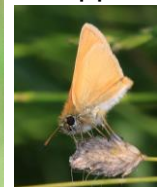
Large Skipper



Small Skipper



Essex
Skipper



Note: All three **Skippers** can be found on North Meadow. Very similar in appearance but can be differentiated by **very** close inspection of antenna tips. Large Skipper has hooks at the tip of the antenna. Essex antenna tip (underside) is black, whilst the Small is Orange. If in doubt record it as a Small Skipper



Painted Lady



Speckled Wood



Orange-tip
White



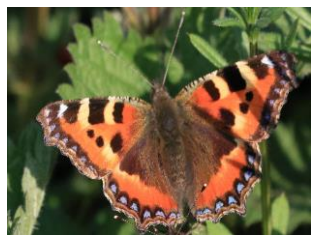
Red Admiral



Meadow Brown



Green-veined
White



Small
Tortoiseshell



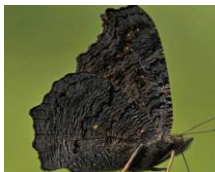
Ringlet



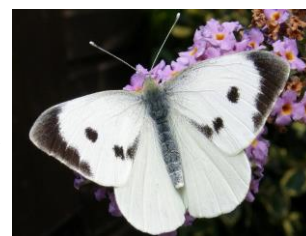
Small White



Peacock



Small Copper



Large White



Comma



Gatekeeper



Marbled White

