

# Arson Attack on Goldwater Lodge

Written by Irene Watson, GPCA Secretary



building is largely untouched. The utilities – water, gas and electricity – are all currently shut off because of potential fire damage. The Christmas and New Year holidays have prolonged the process of surveying the damage and planning for the restoration. What we do know is that the damage to the roof means that the Hall will be closed until further notice – up to 6 months, according to Woking Borough Council's surveyors.

**B**y now, I am sure all our readers know about the fire which devastated Goldwater Lodge in the early hours of Sunday, 2nd December. The fire was started deliberately in the canopy over the walkway round the part of the building which used to be a sports hall and spread to the roof and, from there, to the main building, both now occupied by Toad Hall Nursery. The roof of the "sports hall" was destroyed and the main building severely damaged. Seven fire appliances, including an aerial ladder, were on site, fighting the blaze and trying to stop the fire spreading from Toad Hall Nursery to the GPCA Community Hall.

At first, we thought the Fire Brigade had succeeded but when the building was finally safe to inspect, it was evident that the roof of the Community Hall had been damaged, although the interior of the

The GPCA Community Hall was regularly used by organisations such as Lakeside Christian Fellowship, Kumon Maths, Weight-Watchers, Fun Way to Fitness, Lakeside Toddlers and others, not to mention all the private individuals who hired the Hall for parties. All have had to be found alternative accommodation, where possible. We are very grateful to Gary Rimay Muranyi, Chairman of Dianthus Trading CIC, who stepped into the breach and immediately offered

continues on back page



The Dianthus Building – also known as the Sea Cadet building next to the lake. (Photo by Irene Watson)

**Tel: 01483 727 474**  
For friendly advice and prices

**KRB**

**Why Have Double When You Can Have Triple At KRB For No Extra Cost**

**PVCu Triple Glazing**  
The 'Ultimate Energy-Saving, Noise-Reducing Window'

- Standard float glass first pane
- Argon gas-filled cavity
- 'Low-E' Toughened Glass second pane
- Argon gas-filled cavity
- 'Low-E' Glass third pane

Future-ready  
'U'-Value  
0.8 W/m²K

**LIMITED TIME  
ONLY OFFER ENDS  
1ST DECEMBER, 2012  
'New Quotes Only'**



**SEYMOURS ESTATE AGENTS**  
SELLING OR LETTING ☎ 01483 757700



January 2013 • Issue 131

Published by the Goldsworth Park Community Association

**Editor** Amanda Coulson  
**Advertising** Clive Walker  
**Art Editor** Nick Webster  
**Production** Steve Barnett

**Editorial:** News copy date for the February 2013 issue is Friday 25th January. Please post or deliver copy to The Editor at: 37 Willowmead Close, Goldsworth Park, Woking GU21 3DN or E-mail: [goldsworthnews@yahoo.co.uk](mailto:goldsworthnews@yahoo.co.uk)

**Advertising:** Deadline for the February 2013 edition is Friday 25th January. Please send or e-mail copy or design files to **Clive Walker** at the Knaphill Print address below, or e-mail it to: [quorum.publications@virgin.net](mailto:quorum.publications@virgin.net)

Printed by The **Knaphill Print** Company  
 Tel: 01483 474900 • Fax: 01483 797263

16 Lower Guildford Road, Knaphill, Woking, Surrey GU21 2EG

No responsibility for the quality of goods or services advertised in this magazine can be accepted by the publishers or printers. Advertisements are included in good faith. No part of this magazine may be reproduced in any form whatsoever without the prior permission of the Publishers.

The Publishers do not necessarily agree with the views expressed by contributors, nor do they accept any responsibility for errors of interpretation in the subject matter of this magazine. All reasonable care is taken to ensure accuracy in preparation of the magazine but neither the publishers nor printers can be held legally responsible for the return of unsolicited manuscripts, artwork, or projects. Whilst every care is taken, no responsibility can be accepted for the safety of material submitted.

## Councillors' Surgeries

The Goldsworth Park Councillors hold a surgery from 10am-11am on the first Saturday of every month (except August) at Strollers, accessed from the path between the shops and the lake.

## Goldsworth News distribution

Distribution of Goldsworth News is arranged by Mrs Linda Hill. Her details are: Linda Hill, 5, Newsham Road, Goldsworth Park  
 Tel: 01483 835183

Email: [hilllinda5@googlemail.com](mailto:hilllinda5@googlemail.com)

The G.P.C.A. is always looking for people who can spend a little time each month to distribute copies of Goldsworth News to areas around the park not already covered.

## Hire Goldwater Lodge for your Special Occasion



**All enquiries to  
 Pauline Eastwood on  
 01483 834757**

# County Council Report



**Diana Smith,**

County Councillor for Knaphill and Goldsworth West

Full Council rubber-stamped the School Organisation Plan for 2012 – 2022 in December. This may sound bad, but after months of consultation with a great many interested groups, a full discussion in the Education Committee, and the draft plan being published for anyone interested to comment on, it's not surprising there wasn't a lot of argument.

The School Organisation Plan is a 119-page document that gets revised year by year. It's a plan in the sense that it gives a lot of information about the current situation, what has been done so far, and principles for the future; it doesn't attempt to determine in detail what's to be done.

Currently Woking has the biggest increase in births of the whole county, with more than a 29% increase since 2001. Applications for school places have gone up faster than predicted. The recession may have reduced the number of privately educated pupils, and the experts may have underestimated the number of new children that housing developments bring to an area. The number of new homes could be underestimated, and the proportion of children to adults in some sorts of development may be changing. Linda Kemeny, the Cabinet member responsible for Education, told the Education Committee it seemed that flats now have a greater number of families with children living in them.

As well as information, the plan gives a number of principles. For example Surrey will provide co-educational rather than single sex schools. Another example is general preference for secondary schools only going up to age 16, with pupils going on to Sixth Form or Further Education Colleges.

The plan then describes what has happened so far. In Woking, when the numbers came in, another six and a half classes were needed for September 2012. Surrey County Council can't command schools to create new places, but after meetings with the Head Teachers and Governors, three schools, including Goldsworth, expanded permanently, while other schools including St. Johns and Sythwood took an extra class.

## Secondary Schools

Woking will need extra secondary school places from 2014, which is sooner than many other parts of Surrey.

There's talk of building another secondary school in Woking. One problem is finding the right place to build it. Another is the uncomfortable in-between years up to 2016

or 2017, when there would still be enough free places in neighbouring Surrey Heath's secondary schools to mop up Woking's surplus.

It would be in the interest of the Heads of schools in Surrey Heath (Collingwood, Kings International, Tomlinscote) to encourage such a solution, but I think this would be a real problem for Woking. Children as young as eleven would have to travel long distances to school, which is bad for many reasons. If using these places has to be part of the solution, Jerry Oddie, the Principal at Collingwood College, told the Education Committee that Surrey should look again at providing a good school transport service. This should be regarded as part of the cost.

## Getting your views across

Public pressure does have an effect.

Head Teachers and Chairs of Governors are regularly consulted. The Woking 'Local Committee', made up of the seven Woking County Councillors and an equal number of Borough Councillors, is increasingly involved in a wider range of decisions, including education. And there are public consultations on the County Council website.

It's easy to feel frustrated because none of these bodies seem to have the power to do much. The high-level political decisions made in Westminster about what resources are going to be available for local services come first, and then the pot is divided up further at County Hall. But in my experience when you get below that to the genuinely local decisions, made locally, the tendency is to look for consensus.

I've also noticed that the 'squeaky wheel' more often than not gets some of the oil, and the more people persistently say the same things, the more likely the issue is to get attention. An example is the recent flooding of Lockfield Drive at the bottom of Amstel Way, which didn't get priority for County funds but after constant questions and pressure from three or four Councillors and a number of complaints from members of the public it was allocated local funding.

Persistent, reasonable lobbying tends to work – if it doesn't, that's what elections are for.

Diana Smith can be contacted by e-mail on [diana.smith@surreycc.gov.uk](mailto:diana.smith@surreycc.gov.uk), telephone 07971 665037, through her website <http://dianasmith.mycouncillor.org.uk> or on Twitter@CllrDiS

## Bridge Club comes to Goldsworth Park



The Old Woking Bridge Club has moved into the Dianthus Building, Wishbone Way, Goldsworth Park, GU21 3RT.

Duplicate Bridge is played on Tuesday evenings @ 7:30pm and Wednesday afternoons @ 1:00pm

New members and visitors are always welcome.

For more details see our website: [www.oldwokingbridge.co.uk](http://www.oldwokingbridge.co.uk); email: [admin@oldwokingbridge.co.uk](mailto:admin@oldwokingbridge.co.uk) or call 01276 504765

## GPCA – Annual General Meeting <sup>3</sup> Thursday, 29th November 2012

The Chairman welcomed residents and guests to the AGM and commented that a number of residents now attended monthly meetings fairly regularly. He reported on the activities of the GPCA over the past year, particularly relating to the management of the Hall at Goldwater Lodge which continues to be a popular venue for routine hiring and parties. He referred to the installation by Woking Borough Council of solar PV panels on the roof and commented that the additional security measures necessitated by this installation had yet to be completed. He ended by thanking all the people who contributed to the work of the GPCA.

The Treasurer distributed the audited accounts and gave a report on the GPCA's financial position. He explained the basis of the accounts and ended by saying that the GPCA had a healthy cash balance.

The Editor of Goldsworth News talked about her concerns regarding the future of the magazine due to difficulties with the printers and the person who sources the advertisements. Improvements to the magazine had increased circulation which resulted in more enquiries about advertising but some potential sources of advertising were not followed up. Interesting material is coming in but it is not always possible to

publish the articles due to financial constraints.

Lake Bailiff, Roger Westcott, said he was amazed by what had been accomplished in the 5 years since he started the Lake Bank Restoration Project. He gave a run down on what had been happening round the lake, particularly the wildlife area which had been completed with financial help from the Council and physical help from the Sea Cadets, a local college and a number of residents.

One of the final actions was the election of officers and committee. Only one set of nominations had been received and the voting was unanimous to re-elect Ian Rickard as Chairman, Peter Hill as Treasurer and Irene Watson as Secretary.

Before the meeting ended, Nick Roach, Neighbourhood Officer from Woking Borough Council thanked the GPCA for making his job easier than it might have been. Sean Larkin of the Lakeside Christian Fellowship expressed his thanks to Roger Westcott and to the GPCA Committee for their work for the community.

**All residents are invited to come to the GPCA meetings which are at 7.00pm on the 2nd Thursday of each month and will be held in the Dianthus Building until further notice.**

## BISLEY REMOVAL SERVICES

ESTABLISHED  
OVER  
20 YEARS



### Professional Removals By Experienced Caring Staff

- Domestic & Commercial Removals
- Containerised Storage
- Full Packing Service
- Full Insurance
- Nationwide Service
- Piano Removals
- Small Removals / Single Items
- Discounts for OAPs & Disabled

**For a free, no obligation quotation call**



# 01483 489611



email: [bisley.removals@virgin.net](mailto:bisley.removals@virgin.net) [www.bisleyremovals.co.uk](http://www.bisleyremovals.co.uk)  
Unit 7, Bullhousen Farm, Shaftesbury Rd, Bisley, Surrey



## From the Editor

**!!! HAPPY NEW YEAR !!!**

I would like to wish all our readers a wonderful New Year. It is hard to believe that another year has come and gone so quickly. Before we know it, we will be shopping for Christmas again! I wish I could foresee a prosperous New Year for everyone on the Park but the financial reality of our time dictates differently. Volunteer groups in our community, helping those in need, will be stretched to the maximum this year as more and more people experience hardship. I would like to appeal to everyone who is blessed with financial stability and free time, to please support these local groups, if not financially then with your time.

### From The Lakeside taking a break

Roger Westcott is taking a well deserved break this month but do not worry, he will be back next month with interesting news and happenings from the lake.

### Irregular Editorial Bit

Some of our ardent readers may have noticed that our Editorial section has made irregular appearances during the second half of 2012. Part of the reason is content space in the magazine. Our success over the past few years have meant that we get a lot more material and we sometimes forfeit the Editorial section to make room for more articles.

You might also have noticed that the editorial responsibility has been shared between Irene Watson, Secretary of the GPCA and myself this past year. I would just like to express a very big thank you to Irene for her priceless help with the magazine. She will continue to help me this year because I am happy to announce that I am expecting my first baby in March. Between the two of us, we will make sure the magazine continues to delight and inform Goldsworth Park residents!

# The Lightbox

## Prime Minister's Big Society Award



The Lightbox charity museum and gallery, set up and run by a group of volunteers, is the latest winner of the Prime Minister's Big Society Award.

The local community raised more than £7m to develop The Lightbox cultural centre through charitable events ranging from golf days and sponsored walks to auctions.

Staffed by more than 150 volunteers, the centre runs an award-winning education and

outreach service focussed on history and the arts which sees community groups and schools work with professional artists in the centre's purpose-built Education Studio.

Achievements include:

- Creating 16 internships for young people.
- Running a regular work experience programme with 10 schools throughout Surrey.
- Winning the support of Woking Borough Council, including donation of the building site and a capital contribution towards the construction.

### Congratulating The Lightbox on their award

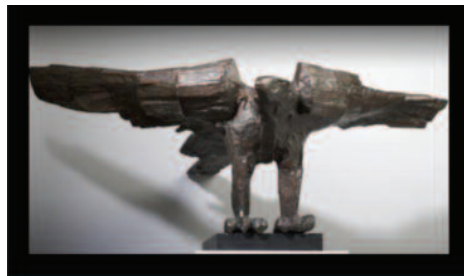
#### The Prime Minister said:

"I recently met volunteers from The Lightbox and saw first-hand the dedication and passion they have shown to make their museum and gallery a reality. I am pleased to be able to present them with a Big Society award to recognise all their hard work.

"The Lightbox shows what the Big Society is in so many ways; from volunteers giving their time and expertise, to winning the support of the whole community for their plan, to generating millions of pounds in donations to make it work. Even now more than 150 volunteers are putting in their time to provide this service to others in the community.

"It just shows what people can do when they work together – it really is a fantastic achievement and I wish them every success for the future."

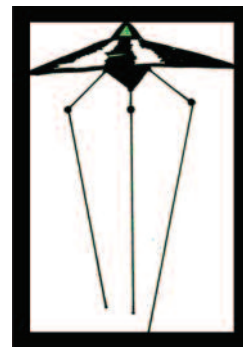
## 2013 Exhibition Highlights at The Lightbox



Elizabeth Frink, Eagle Lectern, 1962 © The Elizabeth Frink Estate

There is a full and varied exhibition programme to look forward to in 2013, from exhibitions that explore the lives and work of remarkable individuals such as sculptor Dame Elisabeth Frink and landscape gardener and craftswoman Gertrude Jekyll to an exhibition that brings H.G. Wells's 'War of the Worlds' back to its Woking roots and explores the impact it continues to have on Science Fiction.

As with all exhibitions at The Lightbox, entry is free of charge (donations welcome) and there will be a comprehensive programme of associated events to accompany them, including talks, tours and creative workshops for families, children and adults.



## Toad Hall Nursery Group

Providers of quality childcare and education



Open from 8 am to 6 pm  
51 weeks of the year

We pride ourselves on offering the very highest standard of care to all our children and ensuring that they receive an individual approach to their care and education. Our nursery is approved and inspected by Ofsted

We offer:-

- Qualified, loving and caring staff who are all vetted
- Security entry system
- Planned activities to meet children's individual needs
- Newly extended and refurbished premises
- Flexible bookings to meet your childcare needs
- Free nursery care for children over 3 years subject to availability
- Extended opening times available
- Home cooked food prepared on site daily

To give your child a helping hand in their early years please contact Katrina on **01483 486116** for more information or to arrange a visit

[www.toadhall-nursery.co.uk](http://www.toadhall-nursery.co.uk)



## Dennis White

**07715413879**

*First driving lesson free*

*33 years experience*

*Discounts for students and block bookings*

*DIA Diploma and Rospa Gold Qualified*

*Advanced and Pass Plus training available*

*Gift vouchers available*

**Enquiries 01483 721131**

**[whiteschoolofmotoring.co.uk](http://whiteschoolofmotoring.co.uk)**

With Burns Night fast approaching, I started thinking about traditional Scottish dishes and so I am giving you my recipe for a traditional, Scottish, thick, warming soup made from smoked fish and vegetables, unprepossessingly called:

## CULLEN SKINK



### Ingredients – Serves 6

- 1500g smoked haddock, skin on - preferably undyed
- A few stalks of parsley, a bay leaf, a blade of mace and a few black pepper corns
- A knob of butter
- 1 medium onion, peeled and finely chopped
- 1 leek, washed and cut into chunks
- 2 medium potatoes, peeled and cut into chunks
- 800ml milk
- Finely chopped chives or fresh parsley to garnish

### Method

- Put the fish into a pan large enough to hold it comfortably, and cover with the milk. Add the parsley, bay leaf, mace and peppercorns, bring gently to the boil and cook for 3 minutes until the fish is lightly cooked.

[Note: if you use the stalks of the parsley in the cooking medium, you can use the leaves for the garnish]

- Remove the pan from the heat and leave for 5 minutes for the herbs and fish to infuse their flavour into the milk.
- Remove the haddock from the milk with a slotted spoon and put to one side. Strain the liquid through a fine sieve and reserve the infused milk.
- Melt the butter in another pan on a medium-low heat, and add the onion and the leek. Cover and sweat, without colouring, for about 10 minutes until softened. Add the potato and stir to coat with butter. Pour in the infused milk and bring to a simmer. Cook for 15 minutes until the potato is tender.
- Meanwhile, remove the skin, and any bones from the haddock, and break into flakes.
- Lift out about a quarter of the potatoes and leeks with a slotted spoon, and set aside. Add half the haddock to the pan and add the rest to the potatoes and leeks. Blend with a stick blender until fairly smooth. Check the seasoning but go easy on the salt as the fish is usually salty enough.
- Pour the soup into the bowls, add a generous spoonful of the potato, leek and haddock mixture and garnish with a sprinkling of chives or parsley.
- Serve with warm crusty bread – or soda bread to be authentic.

## Su Doku

				3				
		5	7		6	1		
		9				8		
	3	8				6	4	
2	5	4				3	7	8
6		1	2		8	5		3
	7	2				4	6	
				4				

Fill the grid so that every column, every row and every 3x3 box contains the numbers 1 – 9.

Solution next month

4	7	6	9	8	2	1	3	5
9	5	1	6	4	3	8	2	7
2	8	3	5	1	7	4	9	6
1	6	7	2	5	9	3	8	4
8	3	4	7	6	1	2	5	9
5	2	9	4	3	8	6	7	1
6	9	2	3	7	4	5	1	8
3	1	5	8	9	6	7	4	2
7	4	8	1	2	5	9	6	3

Solution to April 2012 puzzle.



**Best wishes for a  
Happy New Year  
from the team offering  
a full postal service  
9am-5pm**

**Tina, Karen &  
Councilor Saj Hussain**

**KNAPHILL  
POST OFFICE**

**1-2 Anchor Crescent  
Knaphill, Woking, Surrey GU21 2PD**

**Tel: 01483 473273**

**Stationery & Greetings Cards  
Newsagents & Fancy Goods**



# News from Woking Borough Council



## Garden Waste Collection Scheme is extended to new subscribers

Green fingered residents can now sign up for the newly extended garden waste collection scheme, following Woking Borough

Council's decision to expand the service by an additional 6,500 subscribers.

Following long-term extra demand for the service, the Council has extended the Borough's subscription base by over 50%. Originally capped at 12,000 subscribers, the 'opt in', paid-for kerbside collection service has maintained a waiting list of nearly 800 residents – all keen to take advantage of the convenient way to recycle their green waste.

Terms and conditions apply and subscriptions are based upon a 12-month non-refundable agreement. Residents wishing to join the scheme can subscribe online at [www.woking.gov.uk/gardenwasteonline](http://www.woking.gov.uk/gardenwasteonline), over the phone by calling 01483 755855 or visiting the Civic Offices in person between 9am and 4.45pm (Monday to Friday). Postal payments by cheque or cash cannot be accepted.

## Council remembers former Mayor of Woking



It is with sadness that Woking Borough Council has to announce the death of former Mayor of Woking and ex-Conservative councillor, Mrs Mehala Gosling, who sadly passed away on **Tuesday, 18 December**. As a mark of respect, the Borough flag will be flown at half-mast.

Mrs Gosling served as Mayor of Woking from 2002 to 2003 and as Ward Councillor for West Byfleet for 12 years. Elected in 1995, she took an active role in the day-to-day running of the Council, serving on many committees, including the Executive, as Chair of Housing and Community Services, and the Housing Task Group.

Mrs Gosling also played an active role in the community, with the Woking Association of Voluntary Service. Following many years as an active Trustee, she became Life President in 2011. She was also a Trustee of the Maybury Centre and a member of the Management Committee of the Woking Town Twinning Association.

## Local opportunities for business growth

As experts still search for the 'green shoots' of

the nation's economic recovery, local business owners and managers are being encouraged to attend the Ambassadors Business Club Forum to explore opportunities for business growth in 2013 on **Wednesday, 23 January** at the H.G. Wells Conference Centre, Woking.

The Council has partnered with Connect 2 Innovation Ltd and Hamlyns LLP to run a networking and business development event which will provide an insight into the local economy and highlight opportunities for business growth.

To encourage local businesses to get involved, one free place is available to any Borough-based business. Otherwise, tickets cost £35 (incl. breakfast).

To book your place, please contact Connect 2 Innovation at [succeed@connect2innovation.co.uk](mailto:succeed@connect2innovation.co.uk)

## Businesses to benefit from young talent

Businesses looking to help young people from Woking Borough to improve their employment and career prospects, could benefit from a financial boost, as Woking Borough Council and Surrey County Council are offering financial support.

Funding worth up to £3,000 is available to those businesses who take on their first apprentice before **31 March 2013**. Potential apprentices must be aged between 19-24 years and live within Woking Borough. And those who recruit apprentices before their 19th birthday will have the full cost of their apprenticeship training met through Government funding.

Funding is available until **April 2013** and businesses are encouraged to apply before this deadline.

For more information, please call Glenn Thorogood on 01483 743016 or email [glenn.thorogood@woking.gov.uk](mailto:glenn.thorogood@woking.gov.uk) Alternatively, for more information on the Invest in Your Success initiative, please visit [www.wokingworks.com/profile/investinyoursuccess](http://www.wokingworks.com/profile/investinyoursuccess)



## All aboard the 25th and final Big Screen Steam Railway Extravaganza

Rail buffs and film enthusiasts will be boarding a celebratory journey back to the steam train archives, as Big Screen Steam pulls into Woking for the very last time on **Saturday, 9 February 2013**.

Big Screen Steam is presented by Woking Borough Council, in association with Woking's New Cinema Club and features two unique programmes, each showing footage and films

dedicated to the age of steam.

Two different shows are scheduled for 3pm and 7.30pm at the Rhoda McGaw Theatre, in Woking. Alan Willmott, formerly of British Transport Films and Andrew Youdell, of the British Film Institute, are the familiar faces guiding the trip back in time with expert commentary.

The afternoon pilgrimage includes the fascinating story of the preserved Kent and East Sussex Railway from Tenterden to Bodiam, narrated by British television and radio presenter, Adrian Chiles. Look at the glorious days of steam from 1897 to 1929 and take a nostalgic journey with Sir John Betjeman as he views a photographic exhibition in London, remembering the great trains of old and looking forward to "railways forever".

The evening excursion aptly features an extract from the gripping railway drama, The Last Journey, showing the final part filmed on the former GWR system between London and Plymouth. The evening comes to a halt with an official film record of the beautiful Watercress Line, today one of the popular Heritage Steam Railways of Southern England.

Tickets cost £5 for each session (key concession card holders: £4) and are available from The Ambassadors Box Office on 0844 871 7645. Fliers detailing the complete programme are available from The Lightbox and the Civic Offices.

For further information, please call Woking Borough Council's Arts Development Officer, Hannah Smith, on 01483 743702 or email [hannah.smith@woking.gov.uk](mailto:hannah.smith@woking.gov.uk)

**NORDEC**  
HEATING LIMITED

**Service**  
**£66**

**A special offer for new customers only**

To celebrate our 55th year in business we are offering a special £66.00 service on your boiler or warm air unit.

**LIMITED OFFER to the first 55 customers only!**

**Call Nordec Heating on 01342 841651 to book today!**



- WARM AIR HEATING
- BOILERS
- SERVICING
- INSTALLATIONS





PCSO 15004  
Adam Worsell



PC 40198  
Emma Barrett

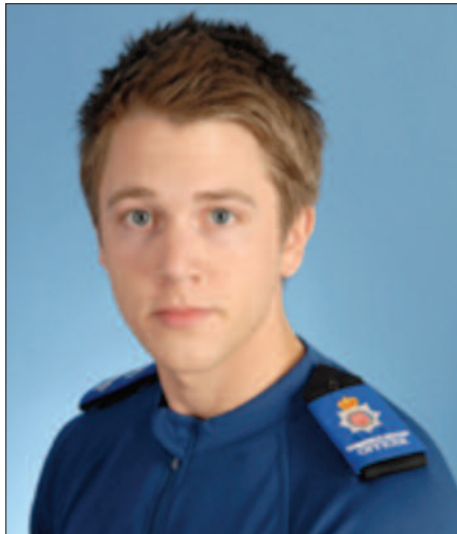


PC 404432  
Matt Hart



PCSO 14849  
Sarah Wentworth

## Police News – Welcoming a new member to the team



This month sees PCSO Adam Worsell join the Goldsworth Park Team to add additional depth and experience to the policing of the area.

Adam is looking forward to meeting local residents so please feel free to introduce yourself to him when you see him out and about.

### What is your history before becoming a Community Support Officer?

Before joining Surrey Police I worked as a Baker for almost 10 years. As well as baking I also went to Art College specialising in drawing which is something I still do in my free time.

### Why did you join Surrey Police?

Ever since I can remember I have had the utmost respect for the Police and the work that they do. I joined so that I would have an opportunity to improve people's lives on a day-to-day basis and to feel like the work that I was doing was benefiting those in the community around me.

### What is the best thing, for you, about being a Community Support Officer?

For me the best thing about the role is

engaging with the public and meeting the wide range of interesting people that make up such a diverse community. Also the variety of things that I get to see and do everyday.

### Now that you have joined the Goldsworth Park team, what do you enjoy most about the Goldsworth Park area?

As well as the many people I have already had the pleasure of meeting in Goldsworth Park the area around the lake itself and the people who make it such a lovely area are what I am enjoying. The people and place are a huge asset to the area and somewhere that the rest of Woking should be proud of.

### Contacting The Team

You can now follow your local team's facebook page (*Woking beat*) and twitter account @Wokingbeat to keep up to date with community engagements and policing in the area

As always residents are encouraged to call **101** for non emergency policing matters and to call **999** if you have a genuine emergency requiring the attendance of the police.

## Goldsworth Park's Rosie Sharpley honoured

Former Woking Borough Councillor and Mayor, Rosie Sharpley, received an MBE in

the New Year Honours list for services to the community in Woking.

and has been particularly focused on the needs of children.

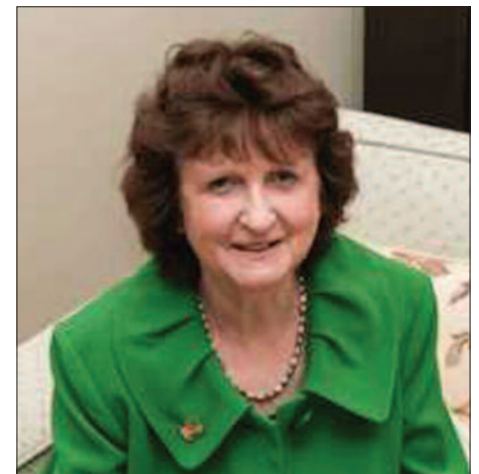


Mayor Rosie Sharpley in 1994 (Picture by Irene Watson)

There are so many ways in which Rosie has served the community - she spent her working life as a nurse in the NHS, working at the Goldsworth Park Health Centre before becoming a nurse practitioner at the walk-in clinic at the Woking Community Hospital. She still managed to find time to stand for election as a Councillor for Goldsworth Park, a position she held from 1988 to 2011, and was Mayor of Woking in 1993-94. In 1989, she became a Magistrate, first in Woking and now in Guildford.

She was active in the Council during the growth of Goldsworth Park and was influential in its development. However, in her many years of service to the people of Goldsworth Park and Woking, she has always put the needs of local people first

Rosie and her husband, Jamie, came to live in Goldsworth Park in 1977 and raised their family here. They still live in the same house that they moved into all those years ago.



Rosie Sharpley 2013 (Picture by Bob Holmes)



Photograph by Malcolm Head

temporary accommodation at the Dianthus Building, next door to Goldwater Lodge, to all of the GPCA's hirers who could be fitted in. We are also grateful to the other organisations such as Woking Hockey Club and Lakers who have offered their help.

Now that we know the extent of the damage and the possible length of closure, the GPCA Chairman has met with the Chairman of Dianthus Trading to discuss future arrangements. From 1st January 2013, Dianthus Trading will manage all the bookings which would have been at Goldwater Lodge. The exceptions, where the groups or parties cannot be accommodated, have been informed and will be assisted, if possible.

If you are looking for a venue for a party, wedding reception or other event, or for regular meetings, please go to [www.dianthustrading.com](http://www.dianthustrading.com).

*Note from the Editor: Fun Way to Fitness have informed me that although their classes have been moved to the Dianthus Building, there is a problem with the evening class due to space restrictions. An 'adapted' evening class will continue for now until a more suitable venue has been found.*



Photograph by Malcolm Head



Photograph by Malcolm Head



Photograph by Malcolm Head



## Goldsworth Care Ding Dong Merrily

'Twas the week before Christmas, and volunteers and clients got together at St. Andrew's Church Coffee Shop for the first ever Goldsworth Care Festive Tea Party.

More than 60 partygoers were entertained by carols and other Yuletide favourites sung by the superb Wey Voices choir, under their director Elizabeth Wilcox. Everyone eagerly joined in the several singalong songs. After that, a splendid tea was served with lots of sandwiches, cakes, mince pies and chocolates. Finally, to prove that Christmas is not just for kids, there was a visit from Santa! (It being 2012 he also brought some rain, dear, but no-one let that put them off.)

Chairman Marian Alden said, "Goldsworth Care has been operating for ten years and today's success makes me wonder why we haven't had a Christmas party before. I'm sure this one won't be the last. I'm so grateful to Pat Checksfield, our Volunteer Co-ordinator, and all the volunteers who have made it possible, and to the Church, who have let us use their Coffee Shop."

Goldsworth Care is one of Woking's eleven Good Neighbour Schemes and its volunteers give a helping hand locally throughout the year. If you want to know more about how they can help you - or you can help them - ring the Goldsworth Care Line on 07751 801587 on any weekday morning.

