

# Tommy D Group off to Kenya

**I**n August 2013 the Tommy D group for bereaved young people, are going to visit and volunteer at an orphanage in Malindi, Kenya.

The group, part of Woking & Sam Beare Hospices counselling service, will visit The Children of the Rising Sun Orphanage, which provides a home for 60 orphaned and abandoned children. So what will it be like to take 8 teenagers from Surrey, who have all suffered a close bereavement to volunteer and help others also bereaved?

The group will be led by Children's Services Manager Julie Cole, she explained "We will be taking a group of children with a shared experience to another group with a similar experience, to hopefully learn and help each other. Visiting Kenya, might sound glamorous, but our trip will be far from luxurious. We will be staying



on site at the orphanage, which has drop toilets and outdoor showers! The food is basic, and one of our duties will be to help cook the meals for 60 children. Even the three year olds at the orphanage are encouraged to help in this. We will also be assisting in the lessons at the attached orphanage school, working in the vegetable garden and other projects.

When asked what they might get out of it, one member responded:

*"It would be really interesting to see what it is like for other children where bereavement is much more a normal way of life. Our experience has been that in this country we are the odd ones out. I wonder what it is like to be in a group, where it is normal?"*

*"We might be able to help them, with some of the ways that we have learned to cope, and they might be able to help us"*

continues on back page

**Tel: 01483 727 474**  
For friendly advice and prices

**KRB**

**Why Have Double When You Can Have Triple At KRB For No Extra Cost**

**PVCu Triple Glazing**

The 'Ultimate Energy-Saving, Noise-Reducing Window'

- Standard float glass first pane
- Argon gas-filled cavity
- 'Low-E' Toughened Glass second pane
- Argon gas-filled cavity
- 'Low-E' Glass third pane

Future-ready  
'U'-Value  
0.8 W/m<sup>2</sup>K

**LIMITED TIME  
ONLY OFFER ENDS  
1ST DECEMBER, 2012  
'New Quotes Only'**



**SEYMOURS ESTATE AGENTS**  
SELLING OR LETTING

01483 757700





February 2013 • Issue 132

Published by the Goldsworth Park Community Association

**Editor** Amanda Coulson  
**Advertising** Clive Walker  
**Art Editor** Nick Webster  
**Production** Steve Barnett

**Editorial:** News copy date for the March 2013 issue is Friday 22nd February. Please post or deliver copy to The Editor at: 37 Willowmead Close, Goldsworth Park, Woking GU21 3DN or E-mail: [goldsworthnews@yahoo.co.uk](mailto:goldsworthnews@yahoo.co.uk)

**Advertising:** Deadline for the March 2013 edition is Friday 22nd February. Please send or e-mail copy or design files to **Clive Walker** at the Knaphill Print address below, or e-mail it to: [quorum.publications@virgin.net](mailto:quorum.publications@virgin.net)

Printed by The **Knaphill Print** Company  
 Tel: 01483 474900 • Fax: 01483 797263  
 16 Lower Guildford Road, Knaphill, Woking, Surrey GU21 2EG

No responsibility for the quality of goods or services advertised in this magazine can be accepted by the publishers or printers. Advertisements are included in good faith. No part of this magazine may be reproduced in any form whatsoever without the prior permission of the Publishers. The Publishers do not necessarily agree with the views expressed by contributors, nor do they accept any responsibility for errors of interpretation in the subject matter of this magazine. All reasonable care is taken to ensure accuracy in preparation of the magazine but neither the publishers nor printers can be held legally responsible for the return of unsolicited manuscripts, artwork, or projects. Whilst every care is taken, no responsibility can be accepted for the safety of material submitted.

## Councillors' Surgeries

The Goldsworth Park Councillors hold a surgery from 10am-11am on the first Saturday of every month (except August) at Strollers, accessed from the path between the shops and the lake.

## Goldsworth News distribution

Distribution of Goldsworth News is arranged by Mrs Linda Hill. Her details are: Linda Hill, 5, Newsham Road, Goldsworth Park  
 Tel: 01483 835183

Email: [hilllinda5@googlemail.com](mailto:hilllinda5@googlemail.com)  
 The G.P.C.A. is always looking for people who can spend a little time each month to distribute copies of Goldsworth News to areas around the park not already covered.

## Hire Goldwater Lodge for your Special Occasion



All enquiries to  
**Pauline Eastwood on**  
**01483 834757**

# County Council Report



## Diana Smith,

County Councillor for Knaphill and Goldsworth West

As I write this article slush is freezing to ice on the road outside. But after several years with snow, Surrey County Council has got its act together and there is a thought-through strategy for deciding how to keep roads clear. Salting routes have been agreed, with different levels of priority, and there's clear information about what's being done. So I know from an e-mail sent out this afternoon that the salting lorries will be out on the 'priority 1' routes across the whole of Surrey this evening.

Not surprisingly, the criteria for priority 1 status include carrying a major bus route, carrying heavy traffic, and linking centres of population. Priority 1 roads in Goldsworth Park include Lockfield Drive, Goldsworth Road, and the parts of roads like Sythwood, Bampton Way and Denton Way that carry the 91 bus route.

An assessment of the weather forecast and road conditions in Surrey is made on a day-by-day basis – or even more frequently, when conditions are changing fast.

Yesterday both priority 1 and priority 2 roads were treated. Parley Drive, Robin Hood Road, and the remainder of Bampton and Denton are examples of priority 2 roads. They get salted after priority 1 roads, and only when there is 'prolonged and persistent' ice and snow. Over the last week they've been treated quite frequently.

### Grit Bins

Away from the salting routes, on residential roads, there are grit boxes at various strategic points so that people can grit particularly icy spots themselves. The yellow plastic containers aren't a serious cost – the real expense comes in refilling them systematically, winter after winter.

The number of grit bins supplied has been quite strictly rationed, using slopes, bends, junctions, and amount of pedestrian traffic to prioritise them. It is possible for Parish Councils and community groups to get extra bins, but at a charge of £1,000, and they have to be in places the highways officers think reasonable.

We don't have Parish Councils in Woking, so the most practical way to get a new grit bin on the highway is for County Councillors to get funding for them from the 'members allocation' fund administered through the Woking Local Committee. This is spent at the discretion of County Councillors to benefit the local community. I've arranged for a number of new grit bins where ice is regularly a problem, for example at the exit

to the Queens Road car park in Knaphill

The £1,000 only covers four years of maintenance with one fill a year paid for. This does seem overpriced. But we don't always find this 'members allocation' money easy to spend effectively. It can pay for such things as play equipment for disabled children, and it can subsidise such things as street parties and Christmas lights. In this context, I feel it's worth gambling that in four years time these grit bins will have proved their worth and they'll quietly be taken into the supported network.

If not, residents who have got used to them and value them will need to contact their County Councillor and make the case for keeping them.

### Lakers – Again!

The green shoots at Lakers Youth Centre are growing! There was another meeting of the steering committee in January, run by the young people themselves. I'm theoretically the Co-Chair, but the Chairman is Jay, and I'm very happy to do nothing more than turn up and listen. Megan is the Secretary, well supported by the Youth and Community worker in charge, Sandie Bolger, as Co-Secretary.

The 'Report for Adult Members' covered the new tuck shop, run by members, activities including a drugs and alcohol awareness evening, a monthly quiz, and plans for a Valentine's Day Disco.

The timetable for the centre shows it in use for young people every day and evening from Monday to Friday, though there's still scope for more, especially at weekends and in the holidays. Sandie has a full complement of Youth Workers, which in itself is an achievement after years of problems with staffing.

One of the projects coming up is a Birthday Party for Lakers, which will be twenty years old in March. Separately to celebrations for the young people, Sandie is looking to have an 'Open Day' for the Centre. This will be the best chance for local people to see the inside of the building since the sports hall was used as a polling centre some years ago, while Sandie can take the opportunity to explain how things are changing, and perhaps recruit some volunteers!

Diana Smith can be contacted by e-mail on [diana.smith@surreycc.gov.uk](mailto:diana.smith@surreycc.gov.uk), telephone 07971 665037, through her website <http://dianasmith.mycouncillor.org.uk> or on Twitter @CllrDiS





## Updated News from Lakers:

### Opening Times

Tuesdays (16:00 - 19:30) Open Access to young people aged 12 - 19 years of age

Tuesdays (19:30 - 21:00) Open Access to young people aged 13 - 19 years of age

Wednesdays (18:00 - 19:30) Steering Group Project

Wednesdays (19:30 - 21:30) Open Access to young people aged 13 - 19 years of age

Thursdays (16:00 - 18:00) Home Work Club, Girls Group and 'Get It On' Drop in.

### 15th February - Valentines Disco

Open to young people aged 13 - 19 years. Tickets on sale from 5th February from Lakers Youth Centre. £1 per person if purchased in advance, £1.50 on the night. Strictly no Alcohol, soft drinks will be on sale through Lakers Bakers Tuck Shop.

### 17th March - Happy Twentieth Birthday Lakers Community Open Day

Sunday, 11:00 - 15:00. Table Top Sale (tables are £8 each, contact Sandie or Jenette on 01483 727253 to book). Face Painting. Guess the weight of the cake. Fun and games and lots more



## From the Editor

### Rollercoaster Weather

January has certainly been an interesting weather month, and personally, I was very happy that the snow finally arrived. Somehow the Christmas season just does not seem festive without a sprinkling of the white stuff.

With the snow came the fun but also the problems! We should not forget that some of our frail and vulnerable residents may not have been able to leave their homes and needed to rely on volunteers for help and support. Once again this just shows how important volunteers are in our neighbourhoods. I therefore urge anyone who may have a bit of extra time to please heed the Salvation Army's request for volunteers in this month's issue. Who knows, it could save a life one day!

### Parking Madness

We try very hard to keep this magazine non-political but I am aware that local Councillors have received so many complaints recently from residents regarding the parking problems on Goldsworth Park that it seemed appropriate to reflect the debate in the

Letters section this month.

It would appear that responsible and considered parking, or lack thereof, seems to be at the heart of most of the complaints. In some areas there are clear breaches of the law, as this month's police article clearly indicates, but there is no "one" solution to this problem on the Park.

Unfortunately, no government office, be it the police or Council can limit the number of vehicles or size of vehicle any one person owns. Where vehicles are not breaking the law, officers are left with mediation to try and negotiate solutions between residents in a specific road which may leave residents feeling resentful.

I therefore urge neighbours to remember that most of Goldsworth Park's residents live in **one-parking space-per-household** roads trying to cope with a modern day **two-car-per-family-society**.

Please let us hear your opinions on this matter. By discussing this openly we may not only encourage neighbours to be more "parking-aware" but may also help to influence the powers that be to make clear informative decisions about how to improve our roads and parking on the Park.



### News from Woking Borough Council

## Postal voters asked to renew their signature

Woking Borough residents who signed up for a postal vote before January 2008 will shortly be contacted by Woking Borough Council to reconfirm their signature.

Absent voters (those who vote by post) are required by law to provide their signature and date of birth when they first register. Legislation requires that after five years, postal voters must renew their signature to ensure local authorities hold the correct data.

Residents contacted by post are urged to complete and return the Postal Voter Refresh form in the prepaid self-addressed envelope as soon as possible. **If the Council does not hear from residents within six weeks, the postal vote will be cancelled.**

Anyone requiring further information should contact Electoral Services on 01483 743860 or email [elections@woking.gov.uk](mailto:elections@woking.gov.uk)

**Dennis White**  
**07715413879**

*First driving lesson free*  
*33 years experience*

*Discounts for students and block bookings*  
*DIA Diploma and Rospa Gold Qualified*  
*Advanced and Pass Plus training available*  
*Gift vouchers available*

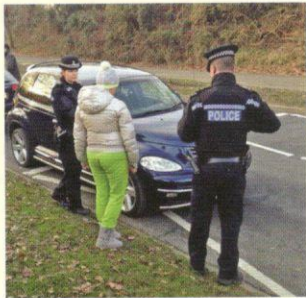
**Enquiries 01483 721131**  
**[whiteschoolofmotoring.co.uk](http://whiteschoolofmotoring.co.uk)**



# GOLDSWORTH LETTERS

## Hold on a minute. Why exactly were these road works on Sythwood by the Sythwood school necessary?

I was just walking to school when this photo was taken. I passed 8 other cars breaking the Highway Code less than 200 yards away. Hundreds break it every day on the park. I wonder how many people know that you should not park on or opposite a junction, just before an island or on the



pavement. When I spoke to one person he said "well there are yellow lines where I live on Goldsworth Park to stop us parking, so I guess that tells us you can park anywhere else"!

But is parking the real issue here...

### The roadworks on Sythwood

I thought it was about calming the traffic. The notice said 'traffic calming measures'. First, years ago, we got two islands in the road to slow the traffic.... Ha ha.

Then later the bus stop laybys were removed to delay cars behind busses stopping in the road. One every 10 minutes if you are lucky. So cars can race for 9 1/2 minutes out of every 10 minutes

Now workmen have dug up the road and raised the surface by just a few inches with a very smooth ramp at each end ..... carefully, so the job is neat and not to disrupt the calm drive of the car. Speed is no issue here just the traffic lights used by people mainly before or after school. A couple of 15 minutes a day. I am not knocking the lights. It is great to have them but is the issue not traffic calming? Why have Bullbeggars got proper humps and Wych Hill? So they can get their posh cars out safely? I can see no other reason. Surely our children deserve better than that pathetic well laid very smooth 'hump'.

### As for the parking issue

After more than 30 years of parking offences being ignored, surely they should be given some warning before fixed penalty notices are given. Yes by all means get the parked cars off the junctions and pavements, but give people some warning that you are taking up this matter first!

And please can we have some real humps to slow the traffic!

*Name and address supplied*

**Note from Editor:** Parking on Goldsworth Park, especially near schools have been a problem for many years. The new pedestrian crossing has had its fair share of support and criticism. I therefore felt it necessary that we include

responses to this letter from the organisations that are directly involved with this crossing and hopefully encourage positive discussion about ALL the parking issues we have on the Park. It is important to note that the Police regularly visit Sythwood and other schools in the area to deal with parking issues. During the week in which these photos were taken, the Police also addressed parking issues at Beaufort School, Goldsworth School and Woking High School.

### PS Mark Bridge, Woking Neighbourhood Sergeant:

*"The two pictures taken clearly highlight the issues we have with members of the public parking inconsiderately in this area. The zigzag lanes outside the school and on the crossing are there to protect children, parents and members of the public when crossing the road. The picture showing the driver having parked within 10 metres of the junction clearly shows the car driving up to the junction and being forced to drive on the opposing carriageway which would be a problem and a danger for any oncoming cars."*

*"Whilst I accept the roadworks may not have helped, the main issue is inconsiderate parking which can cause a danger. Police will often try the educational route first which has been the case with this parking issue. Police have previously contacted the school, placed notices in local news magazines, updated the Police Web page and made the school aware, who in turn have informed parents of the problem. Having exhausted these means we have simply carried out some enforcement to protect local residents."*

### Andrew Storey, Sythwood School Governor:

*"Sythwood Primary School welcomes the new pedestrian crossing that has been installed on Sythwood to make crossing this busy road easier and safer for our children. Parking at the school is difficult and has long been an issue. Regular reminders are sent out to parents by text and in the weekly newsletters requesting that they park safely and considerately. It is clear that a minority of people continue to park illegally, unsafely or inconsiderately. As a school we have no power to actually tackle this matter directly with the people involved but we will continue to work closely with the police and the council to ensure that our children are kept as safe as possible. We support the Park Smart initiative."*

### Bryan Cross, Goldsworth East Ward Councillor:

*"As a previous Governor of Sythwood Primary School and a local Councillor, I have on several occasions been involved with concerns to slow the traffic down outside the school and to prevent dangerous parking in the vicinity of the school. Unfortunately there is a shortage of parking spaces near the school and that is not easy to resolve. A 20mph speed limit can be considered but this will not stop inconsiderate and dangerous parking by a few parents. I know the School staff and Governors have on numerous occasions, over the years, tried to get this resolved. Is it time to ask the County Council to introduce double yellow lines and will more parents be willing to walk their children to school? Some bus drivers don't like speed humps but maybe this also needs to be revisited? However some parents and residents will not agree."*



# SCOTCH PANCAKES



- 25g / 1oz caster sugar
- 2 free range eggs
- 100ml / 3fl oz milk
- 25g / 1oz melted butter

## Method

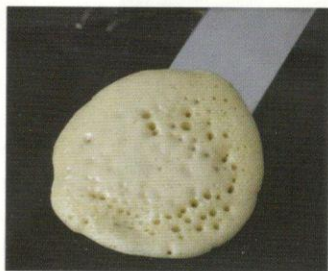
- Sift the flour and salt into a bowl, stir in the sugar and make a well in the centre, pour the eggs in and add a little of the milk. Start to beat and gradually add more milk until you have a smooth batter that drops reluctantly off the spoon. Stir in the melted butter.
- Heat a heavy-based pan over a medium heat and grease with a smear of butter or oil. Drop tablespoons of the batter onto the pan, leaving room for it to spread. When bubbles start to form, flip them over and cook for a few more minutes

With Shrove Tuesday in a week or so, my mind has turned to pancakes – metaphorically not literally, of course. There are so many kinds of pancakes, I wondered which to tell you about. There are French crepe, American pancakes, English drop scones and Scotch pancakes; all are variations on a delicious theme. The French crepe is the thin pancake usually served with lemon and sugar while the American, English and Scotch varieties are thicker and fluffier, served with bacon and maple syrup at breakfast or with butter and honey for tea.

This is a recipe for Scotch pancakes that I remember my Irish aunt making many years ago, using a cast iron griddle on the Raeburn.

## Ingredients

- 125g / 4½ ozs self raising flour
- a pinch of salt



			2		7			
		8		4		5		
8	4						6	9
			8	3	9			
	5	7				3	2	
2	8	4				7	1	3
3				7				2
7		5				8		4

Fill the grid so that every column, every row and every 3x3 box contains the numbers 1 – 9.

Solution next month

Solution to January's Puzzle

4	1	6	8	3	2	9	5	7
3	8	5	7	9	6	1	2	4
7	2	9	4	1	5	8	3	6
9	6	7	3	8	4	2	1	5
7	3	8	5	2	7	6	4	9
2	5	4	7	6	9	3	7	8
6	4	1	2	7	8	5	9	3
8	7	2	9	5	3	4	6	1
5	9	3	6	4	1	7	8	2



## Saint Valentine's Day – 14th February

The celebration of St. Valentine's Day is steeped in legend and mystery; indeed the motives behind the day's creation and even St. Valentine himself have been shrouded in controversy and doubt.

The story begins with some unknown medieval birdwatchers, probably in France rather than England, who reckoned that birds begin mating in mid-February, and decided to give this a precise date: 14 February. As was normal at that period, they expressed the date as the feast-day of a saint; in the Catholic Church every day in the year celebrates at least one saint, and, for people who had no printed calendars, it was easier to remember dates by names than by figures. It happens that 14th February is dedicated to one or other of two early Roman martyrs, both named Valentinus, believed to have died on that date.

The first official Saint Valentine's Day was declared on 14th February by Pope Galasius in 496 AD. This does not mean that there is anything to link the martyrs themselves to birds, or to human love; it is by arbitrary chance that their name appears, and if the birdwatchers had picked on the 15th (St Faustus's Day) rather than the 14th, we would be now sending one another 'Faustines' as love-tokens.

A romantic but unlikely story is that one of the two Roman martyrs called Valentine was a priest who rose to distinction by disobeying Emperor Claudius in 270 AD and conducting illegitimate wedding ceremonies in the capital. Emperor Claudius claimed that married men made poor soldiers and consequently decreed that all marriages of younger citizens would be outlawed. Valentine, however, maintained

that marriage was part of God's plan and purpose for the world. He continued to conduct marriages in secret between

young people, sometimes as young as twelve, in the name of love. His success gained him unwelcome notoriety and led to his downfall. He was jailed and ultimately beheaded, but not before he fell in love with the jailer's daughter. It is said that on the evening of his execution he passed her a note which read "from your Valentine". This story has blossomed into the defining tradition of Valentine's Day. An estimated one billion cards are sent each year, making it the second largest card-sending holiday of the year behind Christmas.







## FROM THE LAKESIDE – FEBRUARY 2013

Roger Westcott is one of the voluntary fishing bailiffs appointed by Woking Borough Council to oversee fishing, monitor fish stocks and other wildlife, and keep the area generally clean and tidy.

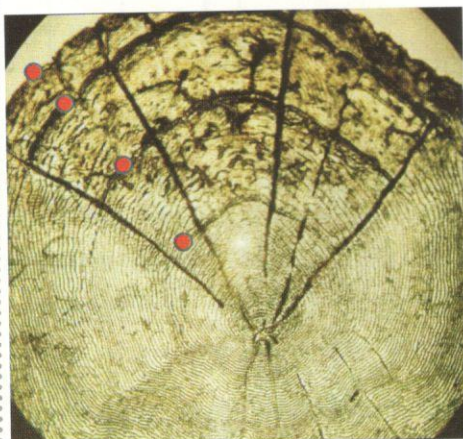
You may remember that, back in October 2012, we had small parts of the lake netted by the Environment Agency to check on the health and the approximate numbers of fish. I promised to update you on their findings. We now have all their compiled data which makes rather interesting reading, despite less fish being caught than we had hoped for.

Firstly, the not so good news: some of the fish netted were found to be carrying unwanted parasites, two of which fit into Category 2 of Section 30 of the Salmon and Freshwater Fish Act, 1975. Although the infection is "Occasional to Light", if stocks of fish ever became "High", it would be more difficult to find new homes for fish if thinning was considered, as only waters predisposed to Category 2 parasites would be considered. Having said that, the infected fish, despite their unwanted guests, remain in good health, due to such low levels of infection.

There were a few other minor infections identified, all of which are considered

typical of any body of water, and do not pose a threat to the stock. All in all, the overall health of the fish in Goldsworth Lake is very good.

This is confirmed by the next interesting fact. A number of fish scale samples were studied; it was just like looking at the rings of a felled tree. The age of a fish can be determined in the same way by counting the growth rings. When the age and overall measurements are compared, you can get a clear view of how well the fish are growing. These statistics were then compared by the Environment Agency with the national growth rate and it was found that, of the two main species studied, Roach are growing 15% faster here and Bream a staggering



Counting the number of rings

40% faster than the national average, which suggests not only that the general health of the stock is good but the amount of natural food, oxygen, etc., is at a sustainable level.

As to how many fish are in the lake, we can only guess; it could be tens of thousands and there is good evidence to support that supposition.

The majority of fish netted were fry, suggesting good recruitment among the species present, with Roach and Perch doing particularly well. A number of young Pike were also netted. I have mentioned before that, if a body of water holds a good head of Pike – the top predator – you can be sure that everything below in the food chain is doing well.

In summary, we have a thriving population of fish and, with the introduction of the new plant-life over the past few years, the Environment Agency considers that the numbers of other species, such as Carp and Tench, which have declined due to the lack of a suitable breeding habitat, may now increase.

With these facts before us, I feel more than satisfied with how the lake and its inhabitants are doing. We will naturally continue to monitor the stock from time to time, but for now the garden looks rosy.



**Not Just**  
**KITCHEN IDEAS**  
Bathrooms, Bedrooms & Studies

[www.notjustkitchenideas.com](http://www.notjustkitchenideas.com)

Find out why 70% of our business comes from recommendation and with over 70 room displays at Frimley, we guarantee you won't be disappointed.

For a free design call us on:  
**0500 691771**

1 Hermitage Road, St. Johns, Woking, GU21 8TE • 01483 722599  
8 The Parade, Frimley High Street, GU16 7HY • 01276 691970

AND NOW ALSO IN GUILDFORD, JUST OFF THE DENIS ROUNABOUT.

**ASK ABOUT OUR FREE TILES & MULTIPLE ROOM DISCOUNT.**

**NORDEC**  
HEATING LIMITED

**Service**  
**£66**

**A special offer for new customers only**

To celebrate our 55th year in business we are offering a special £66.00 service on your boiler or warm air unit.

LIMITED OFFER to the first 55 customers only!

Call Nordec Heating  
on 01342 841651  
to book today!



- WARM AIR HEATING
- BOILERS
- SERVICING
- INSTALLATIONS







PCSO 15004  
Adam Worsell



PC 40198  
Emma Barrett



PC 404432  
Matt Hart



PCSO 14849  
Sarah Wentworth

## Parking Issues

Your local Safer Neighbourhood Team are committed to dealing with parking issues in Goldsworth Park, especially around Beaufort and Sythwood Schools.

Whilst on patrol in the area, if we see a car parked inconsiderately, we will firstly try and speak to the driver and give them advice as to parking offences that they may be committing. If this advice is not adhered to then more robust action is taken and drivers could receive fines and points on their license in certain circumstances.

This issue has been raised by many residents in the area and as such the Local Police Officers and PCSOs have been proactively targeting cars that are parked inconsiderately. These cars and drivers have either received warnings and words of advice or fixed penalties and points.

We urge residents to Park Smart.

- ✗ When parking on a footpath ensure there is enough space for a pushchair or wheelchair to pass. This is an unnecessary obstruction and result in a **£30** fine.
- ✗ Do not park on pedestrian crossings and their zigzag lines. This can result in a **£60** fine and **3 points** on your license.
- ✗ Do not park on school entrance markings during their hours of operations
- ✗ Do not park on double yellow and single yellow lines (during controlled hours) and in time limited areas for longer than allowed.
- ✗ Do not park opposite a junction
- ✗ Do not park within **10 meters** of a junction

## Helping Others

On **20th April 2013** the local team in partnership with Woking Borough Council are holding a fundraising event to raise money for victims of the arson at Goldwater Lodge and Toad Hall Nursery. We are looking for volunteers to get involved with running stalls, games and events on the day to raise as much money as possible. Please contact Sarah Wentworth on [wentworth14849@surrey.pnn.police.uk](mailto:wentworth14849@surrey.pnn.police.uk) or telephone 101 and ask for extension 31279 for more information.

If you wish to contact your local safer neighbourhood team; our email address is [sntwoking@surrey.pnn.police.uk](mailto:sntwoking@surrey.pnn.police.uk). Alternatively you can telephone us on 101 or speak with one of us when you see us on patrol. In an emergency please dial 999.

## BISLEY REMOVAL SERVICES

ESTABLISHED  
OVER  
20 YEARS



### Professional Removals By Experienced Caring Staff

- Domestic & Commercial Removals
- Containerised Storage
- Full Packing Service
- Full Insurance
- Nationwide Service
- Piano Removals
- Small Removals / Single Items
- Discounts for OAPs & Disabled

For a free, no obligation quotation call



**01483 489611**



email: [bisley.removals@virgin.net](mailto:bisley.removals@virgin.net) [www.bisleyremovals.co.uk](http://www.bisleyremovals.co.uk)  
Unit 7, Bullhousen Farm, Shaftesbury Rd, Bisley, Surrey



## Volunteers Needed

How long did you keep your New Year's resolutions? Many people start the New Year wanting to do more to help others or to become a volunteer, both of these things you can do at our Charity Shop in Horsell.

It's not all about selling stuff, although that does come into it, but it's about giving good customer service. We don't always know why people are bringing donations into the shop, so we need people who will be caring and kind. It would be marvellous if you are a good salesperson, but not essential, as we need people who can sort and price the items donated as well. If you can give a couple of hours or a whole day a week, or a Saturday morning, it can be flexible.

If you would like to know more or to pick up an application form then please come into The Salvation Army Church, Sythwood, between 9am - 3pm Monday to Friday or ring Jan Howlin, Community Services Manager on 01483 793704.



For some of the teenagers taking part, this will be the first time that they have been away from their surviving parent for more than a night or two. That in itself is a huge achievement. As one of the group said,

*"I really want to go to university, but since my Dad died, I get scared about being away from Mum for too long. This will be really good practice to get me used to that. If I can cope with this, then I can cope with going to 'Uni!'"*

### Raising Funds

The Tommy D group, are funding the entire project themselves, and are already well under way in raising funds. Anything raised in excess of the project costs, will be split between the orphanage and Woking & Sam Beare Hospices. So far they have held car-boot sales, a quiz night, an African drumming session, face painting activities and are now organising a car wash **over March 2/3rd weekend** and a Quiz Night on the **12th March** at the Rowbarge pub in Woking. Visit [www.wsbhospices.co.uk](http://www.wsbhospices.co.uk) for further details.

If you would like to donate to the project visit Julie's Justgiving page [www.justgiving.com/juliedawncole-kenya](http://www.justgiving.com/juliedawncole-kenya)

The group includes: Julie Cole, Helen Rance, Lisa Jones, Nick Di Felice, Megan Lowe, Joe Plume, Liam Grant, Jody Powell, Andrew Baynham, Francesca Sleet, and Rafaella Barratt and Lucy Braithwaite.

## More news from Hospice

### 31st March – Hospice to Hospice Hop!

Join us for an Easter Sunday walk with a difference. Walk from Woking to Weybridge whilst raising money for Woking & Sam Beare Hospices and showing off your "bunny side". Fancy dress, prizes and lots of Easter fun is to be had for only £5 per person. Children under 5 go free. Shorter routes also an option. Call: 01483 881752 or visit [www.wsbhospices.co.uk](http://www.wsbhospices.co.uk) for more information

### 14th April – Brighton Marathon

If running a marathon is something you've always wanted to do, then why not take part in the Brighton Marathon and raise money for Woking Hospice. The Hospice have guaranteed places and the Brighton Marathon really does have it all: a great course, brilliant sea views, and amazing atmosphere. This marathon is back for another year, and it just gets bigger and better! Simply request a sponsorship pack with amazing benefits like a free running top and fundraising tips, only a limited amount of places are available so call fundraising on 01483 881752 or visit [www.wsbhospices.co.uk](http://www.wsbhospices.co.uk)



## News Update – Goldwater Lodge

The GPCA's part of the building has now been boarded up awaiting the repairs to the roof which are necessary before the services (electricity, gas and water) can be reinstated. This level of security may seem over-the-top but there was a break-in shortly after the fire; what the "breakers-in" thought they would find, we do not know, but they took a fire extinguisher which they threw into the Dianthus Building yard.

The first structural survey of the building showed that a more specialised analysis of parts of the steel work was required; this has been carried out and the results will take a further 2 – 3 weeks. No decisions can be made about the future until these results are known. In the meantime, Woking Borough Council is going out to tender for a consulting firm to manage the repair/rebuild, when it becomes possible to move forward.

We hope to have more news for you next month.

