

# GOLDSWORTH NEWS

Jan/Feb 2018 – Issue 161

**GPCA**  
Goldsworth Park  
Community Association

[www.ourgoldsworthpark.org.uk](http://www.ourgoldsworthpark.org.uk)

## In this edition

- Fly-tipper fined
- Hospice Royal visit
- From the Lakeside
- NGP update



## COMMUNITY RALLIES FOR LAKERS

See Page 4

**EURONICS**

**BLOMBERG  
FREESTANDING  
APPLIANCES...**

**WITH 3 YEAR  
WARRANTY\***

**FOR EXTRA PEACE OF MIND**

**FROM YOUR LOCAL ELECTRICAL *Superhero!***



**Blomberg**  
seit 1883

**1400 Spin  
8kg Washing  
Machine**

Model No: LWF28441W

- Optima Inverter Motor (10yr Warranty)
- 16 Programmes incl. Hand Wash
- Fast Full Load 8kg in 32 Mins
- Dimensions: H85xW60xD54cm

ONLY  
**£349.99**

**3.  
YEAR  
Guarantee**



**Blomberg**  
seit 1883

**8kg  
Condenser  
Tumble Dryer**

Model No: LTS2832W

- 16 Programmes, LED Time Display
- Heat Pump Technology
- Sensor & Timed Programmes
- Dimensions: H85xW60xD60.9cm

ONLY  
**£399.99**

**3.  
YEAR  
Guarantee**



**RSM**  
**Domestic Appliances**  
FRIENDLY SERVICE • BIG SAVINGS • FAST DELIVERY

**YOUR LOCAL STORE  
High Street  
Knaphill, Woking**

**T: 01483 475000**

Also in Ashted & Bookham



**FREE  
LOCAL  
DELIVERY\***

\*T&Cs apply. Select Products Only. Sold as an agent for Euronics Limited. All rights reserved. All offers are subject to availability while stocks last. Delivery & Installation charges may apply Exclusions and Radius Apply. Prices correct at time of print but can be subject to change. See in store for full details. Images for illustration purposes only. Copyright Euronics 2016. October E&OE 2016. Saving compared to a higher price charged for 28 days in the last six months unless otherwise stated.

Buy online today at [www.rsmdomesticappliances.com](http://www.rsmdomesticappliances.com)



# Pilates Classes



Daytime classes at Goldwater Lodge  
with Pilateswithjackie.

I also teach other local classes and  
One-to-one sessions.

Please contact me on  
**admin@pilateswithjackie.co.uk** or  
on **07828 40021** for details.



## CHERI BOBBINS DOMESTIC SERVICES

ALL ASPECTS OF DOMESTIC HELP UNDERTAKEN

- Cleaning/Ironing
- Transportation for Appointments/Shopping
- Prescription/Medication Collection
- Cooking
- Gardening/Small DIY Jobs
- Companionship

Fully Insured, DBS Checked. References available upon request.

Please do give me a call on:  
(Mobile: 07931 175189) (Home: 01483 476805)

Email: [cherigibbons@hotmail.com](mailto:cherigibbons@hotmail.com) or look me up on facebook:  
Cheri Bobbins Domestic Services



### CONVEYANCING AND PROBATE PRACTITIONERS

We offer the below services to our clients, conducted in a friendly, professional, supportive manner. We are excellent communicators using both technology and traditional standards of service to suit our clients.

#### PROPERTY LAW SPECIALISTS

#### SELLING AND/OR BUYING A PROPERTY

#### REMORTGAGES

#### TRANSFERS

#### PROBATE

#### WILLS

#### DECLARATION OF TRUSTS

#### LASTING POWERS OF ATTORNEY

#### COMMISSIONERS FOR OATHS

Please telephone or email for a free estimate or for further information.

#### Business Hours:

9am to 5.30pm Monday to Friday

6 Anchor Crescent, Knaphill, Woking, Surrey GU21 2PD (Free parking)

T: 01483 485700 F: 01483 485701 E: [lyn@lyonsandcompany.co.uk](mailto:lyn@lyonsandcompany.co.uk)



## Looking for a day care nursery?

### Toad Hall Nursery, Woking

Our fantastic Woking OFSTED registered nursery has been purpose-built to provide a welcoming, friendly and spacious environment. With beautiful gardens to play in - come and see us to find out how we support your child to learn and develop!

#### Reasons why parents choose Toad Hall Nursery:

- Free funded\* places for 2-4 year olds with no hidden charges
- All staff are First Aid trained
- Large outdoor area for exploring and fun
- Corporate and emergency service staff discounts
- Individual routine for babies with nappies and wipes included as standard
- Flexible full-time and part-time sessions to suit you
- All food is nutritious, fresh and well-balanced

\* Please note that 2 year old funding is subject to criteria - please ask for more information.

As strong advocates for the Early Years Foundation Stage framework, we also offer **FREE extra activities** such as music and various sports to enhance learning!

To arrange a visit or request a brochure, just contact:

Wishbone Way, Goldwater Lodge, Goldsworth Park, Woking GU21 3RT  
Tel - 01483 486116 Email - [woking@toadhall-nursery.co.uk](mailto:woking@toadhall-nursery.co.uk)  
[facebook.com/wishbonewaynursery](https://www.facebook.com/wishbonewaynursery)

Follow us @ToadHallGroup  
[www.toadhall-nursery.co.uk](http://www.toadhall-nursery.co.uk)  
Recommended on [daynurseries.co.uk](http://daynurseries.co.uk)

CELEBRATING 15 YEARS OF CHILD CARE

# GOLDSWORTH NEWS

Goldsworth News is the magazine of the Goldsworth Park Community Association, published bi-monthly and distributed free of charge to approximately 5,000 dwellings and organisations throughout Goldsworth Park and the surrounding area.

## EDITORIAL TEAM:

**George Binyon (Editor), Royer Slater, Michael Farlam and Robin Smith.**  
editor@ourgoldsworthpark.org.uk

Published by the  
**Goldsworth Park Community Association**  
Designed and printed by Knaphill Print

## ADVERTISE IN GOLDSWORTH NEWS

Contact Paul Webster: 07778 836405,  
paul@websterconsultancy.co.uk

## DISTRIBUTION

Linda Hill, 5 Newsham Road,  
Goldsworth Park GU21 3LA.  
Tel: 01483 835183  
Email: hilllinda5@googlemail.com

**Copy for the next edition in March/April must be submitted by Monday March 5.**

By post: 37 Willowmead Close,  
Goldsworth Park GU21 3DN.  
Email: editor@ourgoldsworthpark.org.uk

## GPCA MEETINGS

Meetings of the Community Association are held at 7.30pm at Goldwater Lodge.

2018 meetings: January 30; April 24;  
July 24; AGM November 6.

All residents are welcome. If you would like to be put on the mailing list for minutes and other information,  
Email: chair@ourgoldsworthpark.org.uk or call 01483 714096.

## LOCAL COUNCILLORS

Following the closure of Strollers coffee shop Conservative councillors will hold a surgery at Costa's in the shopping centre on the first Saturday of the month from 9.30 to 10.30am.

Lib Dem councillors are planning a move to the Lakeview Centre.

**Councillors: Ann-Marie Barker WBC and Ian Eastwood WBC (Lib Dem). Chitra Rana WBC, Saj Hussain SCC & WBC and Colin Kemp SCC & WBC (Conservative).**

## DISCLAIMER

No responsibility for the quality of goods or services advertised in this magazine can be accepted by the publishers, designers or printers. Advertisements are included in good faith.

No part of this magazine may be reproduced in any form without the express prior permission of the publishers.

The publishers do not necessarily agree with the views expressed by contributors nor do they accept any responsibility for errors of interpretation in the subject matter of this magazine.

All reasonable care is taken to ensure accuracy in preparation of the magazine but neither the publisher nor printer can be held legally responsible for the return of unsolicited manuscripts, art work or projects. Whilst every care is taken, no responsibility can be accepted for the safety of material submitted.



Please read and recycle

# Views from the Chair

**THE first thing to say is "Happy New Year." I hope that the coming year will be a good one for the residents of Goldsworth Park and for the GPCA.**

Looking back for a minute, we had a lovely Christmas tree in the shopping centre courtyard; thank you to all the shops which contributed to the costs and to Roger, Alan, Chris and others from the Goldsworth Park Angling Club who not only contributed financially but collected the tree and helped to set it up.

The Tree was welcomed with Christmas carols and songs led by SingGold, the community choir. Rainbows and Brownies took time out from their usual Friday meetings to join in as did some of their parents. There was a great turnout despite the cold weather. Unfortunately, storms Dylan and Eleanor did not think so much of the tree and it blew down twice, but thanks to the anglers, it was swiftly put back up. We may have to rethink arrangements next Christmas!

Did you make a New Year's resolution to get more involved in your community? We have had a response to the request for a Secretary, but we are still seeking a Treasurer to join the Trustees and there are many other opportunities to support the GPCA.

Looking forward, it will be another busy year for the GPCA but there is great satisfaction in seeing the projects we envisage coming to fruition. Major organisational issues include agreeing the lease of the Community Hall with the Council, and changing the GPCA's constitution in order to become a Charitable Incorporated Organisation [CIO]. There are also more mundane issues such as redecorating the hall to keep it in good order for people to hire for private functions and community events.

If you have any issues of general concern or would like to be involved in the work of the GPCA, please contact me through this magazine or at [chair@ourgoldsworthpark.org.uk](mailto:chair@ourgoldsworthpark.org.uk).

**Irene Watson**, GPCA Chair



@ourgpca



facebook.com/goldsworth.park

# The Great British Spring Clean

KEEP BRITAIN TIDY'S Great Spring Clean is a campaign which aims to bring people across the country together to clear up the litter that blights our towns, villages, countryside and beaches.

On the first weekend in March, they hope to inspire 500,000 people to get outdoors, get active and help clear up the rubbish that lies around us.

The GPCA will do its bit by holding the spring litter pick from 2.00pm to 4.00pm on Saturday, March 3. As usual, Woking Council will provide litter pickers, bin bags and some high-viz jackets, and will arrange for the full bags to be removed.

So join the growing army of "Litter Heroes" who have had enough of other people's rubbish and meet outside the Community Hall at 2.00pm. Wear stout shoes and gardening gloves, and bring a litter picker if you have one as they may be in short supply that weekend.

Together we can make a difference and clean up the environment on our doorstep.

Woking Councillor for Goldsworth Park Chitra Rana said: "We have a responsibility to each other to make sure we don't litter in the first place. But that message has not yet been heard by everyone."

# GPCA vacancies

WE are pleased to report that we now have a voluntary Secretary but we still require a voluntary Treasurer/Trustee. This is an important role within the GPCA which involves working with other Trustees to manage the GPCA and ensure financial compliance. Day to day, it involves bookkeeping and banking, accounting and reporting. If you are self-motivated and organised with financial and IT skills, and have 10 to 15 hours a month you would like to use for community benefit, please contact the Chair at [chair@ourgoldsworthpark.org.uk](mailto:chair@ourgoldsworthpark.org.uk) or 01483 714096 or the Treasurer at [treasurer@ourgoldsworthpark.org.uk](mailto:treasurer@ourgoldsworthpark.org.uk) or 01483 835183 for a job description and discussion about the role.

# Help us spread the News

THE delivery of the Goldsworth News to every household on the Park is dependent on volunteers. We have most roads covered but there are a few gaps. If you would like to help in any of the roads listed here please contact Linda Hill at [hilllinda5@gmail.com](mailto:hilllinda5@gmail.com)

Heythorpe Close, Huntingdon Road, Nethercote Avenue, Perleybrook Lane, Martindale Road, Helford Walk, Cranfield Court, Chirton Walk, Tenacre, Wendron Close, Denval Walk.





# Lakers: Offers of help roll in

**THE sight and smell of the fire at Lakers Youth Centre on January 2 brought back unhappy memories of the devastating blaze at Goldwater Lodge in December 2012.**

In response the GPCA has offered to help with alternative accommodation along with Woking Council, Dianthus Trading and St Andrew's Church. Arrangements are being coordinated by Surrey County Council's Youth Work Team.

The fire at Lakers started around 6pm and six fire appliances from across the county attended and firefighters remained on site overnight to dampen down. No one was hurt in the blaze.

Surrey Fire and Rescue crews managed to save the main structure of the building but the roof of the reception area collapsed almost completely, exposing blackened timber beams, and rooms at the rear of the building, where the fire is believed to have started, were gutted.

Anthony Durno, Woking Family Service Team manager at Surrey CC responsible for youth work in the area, said: "It's really sad

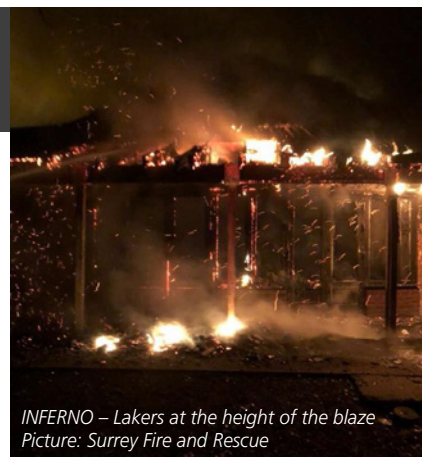
that we have had a fire at Lakers that has caused substantial damage. Work is now taking place to rearrange sessions normally held at the centre. We have other venues in Knaphill and Sheerwater and have had a really good response from the community and our partners."

Some users of Lakers have opened an online petition urging Surrey CC to rebuild the centre fearing that it may not be reopened, but County Councillor for Knaphill Saj Hussain has dismissed that outcome.

He said: "It is our intention to increase, not decrease facilities for youth in the area."

At the time of going to press a spokesman for Surrey Police told Goldsworth News: "We are investigating the circumstances of the fire and enquiries remain ongoing."

If anyone has information as to the circumstances of how the fire may have started, they are asked to contact police on 101 with the reference PR/45180001941. Alternatively you can call independent charity Crimestoppers on 0800 555 111 to report information anonymously.



INFERNO – Lakers at the height of the blaze  
Picture: Surrey Fire and Rescue



BITTER MEMORIES –  
Goldwater Lodge in 2012

# Fly-tipper hit for £3,000

**FLY-TIPPING on Goldsworth Park's Parley Drive has cost the offender over £3,000 in fines and costs.**

Woking Council successfully prosecuted Janibush Piyas of Frailey Hill, Woking, at Guildford Magistrates' Court on Wednesday December 6, 2017, under Section 33 of the Environmental Protection Act 1990 for fly-tipping household items on two separate occasions.

On July 20 last year, a male in a black Mercedes was spotted on CCTV depositing nine sacks containing household waste and a further 19 sacks of waste on August 16 by the recycling banks.

A DVLA enquiry confirmed Piyas was the registered owner of the vehicle and he was invited to the Council Offices for an interview under caution where he admitted the two offences.

At the Court hearing, Piyas pleaded guilty and was fined £1,120 for each offence and ordered to pay £485 in costs plus £170

victim surcharge and £134.38 towards the cost of removing the unauthorised waste – a total of £3,029.38.

Councillor Beryl Hunwicks, Woking Council's Portfolio Holder for Waste and Recycling, said: "This is another successful prosecution for fly-tipping. Yet it demonstrates our ongoing commitment to tackling the problem through whatever means necessary across the Borough.

"Fly-tipping is a criminal offence and will not be tolerated under any circumstance. The Parley Drive recycling site has clear

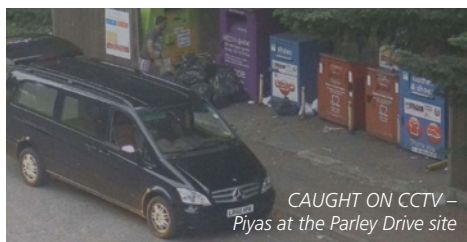
signage identifying it as somewhere to recycle certain household items, not a general dump for waste.

"Disposing of unwanted household items is easy. Extra recycling can be placed in a clear plastic bag at the side of your recycling bin on collection day. Whilst textiles and small electrical items can be placed in bags and left next to your recycling or general waste bin each week.

"For items which cannot be disposed of or recycled via your kerbside collection service or recycling banks, residents can dispose of their waste at the Martyrs Lane Community Recycling Centre, which is open seven days a week.

"This successful prosecution should send a clear message that we will not hesitate to take legal action against those responsible."

For information about the Borough's waste and recycling services, visit [www.woking.gov.uk/waste](http://www.woking.gov.uk/waste)



CAUGHT ON CCTV –  
Piyas at the Parley Drive site

# Beat the Draughts...



**without the overdraft.**

**Beautiful doors, windows and bi-folding doors with precision and care**

Checkatrade

**For a free, no obligation quotation please call today on 01483 474333**

Unit 2, Robin Hood Works, Robin Hood Road, Knaphill,  
Woking, Surrey GU21 2LX Tel: 01483 474333 [www.windsorwindows.net](http://www.windsorwindows.net)



**Windsor Windows**

# Community honour for GPCA couple

**GPCA Chair Irene Watson and her husband Ian Rickard, a past Chair, were presented with the Eric Theobald Memorial Award for 2017 at a full meeting of Woking Council.**

The award is given annually in memory of Knaphill PCSO Eric Theobald, who died in 2005, to the person or persons who have contributed most to the community over the year.

Irene and Ian were nominated by members of the public and the judging panel includes Eric's widow Edna who attended the presentation.

As well as their valuable work for the GPCA, Ian has been chairman of the Woking Police and Community Group and Irene was a founder member of the Woking Mediation Service.

The presentation evening began in the Mayor's parlour where Irene and Ian had the opportunity to talk to the Mayor and judging panel member PC Craig Matthews.

Irene said: "We were escorted down to the Council Chamber where we met Edna Theobald and some of her family. A number of Councillors and Officers congratulated us before the Mayor, fully robed, processed into the Chamber and the Council meeting commenced.

"After prayers and the opening formalities, the citations were read and we were invited to stand before the full Council to receive the award – a large salver with the names of all the recipients engraved on it which remains with the Council and the smaller version which

we keep in pride of place at home. It was a very special occasion and we both feel privileged to receive this award which, we hope, reflects on all those who contribute to the work of the GPCA and to the Goldsworth Park community."



CONGRATULATIONS – Irene Watson and Ian Rickard after receiving the award plaques, with the Mayor of Woking, Cllr Graham Cundy and Edna Theobald

## Show me the way

VISITORS to the Community Hall at Goldwater Lodge often used to complain that they could not find the venue; they would end up at the Dianthus Building or the nursery as the entrance to the hall was out of sight from the Wishbone Way side of the building.

Now, there is no excuse for getting lost or being late for an event as a new sign has been put up giving directions.

Thanks to our Surrey County Councillors, Colin Kemp and Saj Hussain, who supported the project from their grant allocations for local initiatives of public benefit, and Gary Collins of Nose Creative Ltd who gave generously of his time to help with the design, we now have a clear sign showing how to get to the hall.



WAY TO GO – our new sign is in place



### The Community Hall at Goldwater Lodge - the perfect setting for your special occasion



#### Available for one-off or regular bookings.

Recently renovated, the hall accommodates up to 100 people seated theatre style or standing, or 70 seated at tables, with a further 25 in the Snug Bar. With a well fitted serving kitchen and fully staffed bar with very reasonable prices, a small stage and free wi-fi, the Community Hall is the ideal venue for parties, receptions, seminars or meetings.

For further information, check out the web-site  
[www.ourgoldsworthpark.org.uk](http://www.ourgoldsworthpark.org.uk)

call 07958 672203 or email  
[hallmanager@ourgoldsworthpark.org.uk](mailto:hallmanager@ourgoldsworthpark.org.uk)



### Willowmead Homes Ltd Building & Property Services

- |                  |              |                |
|------------------|--------------|----------------|
| Brickwork        | Block Paving | Kitchens       |
| Extensions       | Patios       | Tiling         |
| Alterations      | Tree Surgery | Windows /Doors |
| Groundworks      | Landscaping  | Decorating     |
| Conservatories   | Lawn Care    | Electrical     |
| Loft Conversions | Fencing      | Plumbing       |
| Roofing          | Bathrooms    |                |



Find us on

Facebook



FindAGoodOne

**01483 825146 / 07842 552 448**

All Work Guaranteed & References On Request - FREE Quotations & Advice

Email: [ben@willowmeadhomesltd.co.uk](mailto:ben@willowmeadhomesltd.co.uk) [www.willowmeadhomesltd.co.uk](http://www.willowmeadhomesltd.co.uk)



# Tasting poverty for Lent Revd Kate Wyles

**WHAT do you need to catch a monkey? A monkey-paw-sized-jar and a tempting monkey treat. The monkey will reach her hand into the jar to get the treat and then close her fist around it. But with her fist closed around the treat she won't be able to get her hand out of the jar – unless she lets go of the treat.**

Apparently, this is a foolproof method for catching a monkey! It also reminds us that we can hang on to our possessions so tightly that we sometimes don't know when to let go, and so we get trapped by them.

Lent is the church time of the year that helps us to loosen our hold on things and be more open to God and others through prayer, Bible study and giving as we prepare for Easter.

Maybe you are planning to give something up for Lent. People throughout the UK will be joining in the tradition. Chocolate, alcohol and facebook were top of the 'ditched' list in 2017.

This year I've decided not to give something up, but to

take something up. Beans! For FIVE days! At St Andrew's a few of us will be taking the Mean-Beanz-Challenge to remind us that a billion people throughout the world go hungry every day. We'll be eating just small amounts of rice, beans and porridge.

For just a few days I'll get a taste of what it is like to live in poverty, experiencing the same simple diet that many people exist on around the world while raising money to support the work of Tearfund.

We know that families are going hungry in Woking too, so we'll be collecting Easter treats for the food bank at the Salvation Army – which is a lifeline to many in Goldsworth Park.

If you'd like to sponsor the Mean Beanz Team and help families in poverty look on the website <https://www.standrewsgwp.org/> or pop into the Coffee Shop for more details. Better still why don't you join the challenge and become a Mean-Bean too!

*Kate is Vicar at St Andrew's Church.*

• **Despicable Me 3** is showing at St Andrew's over half-term as a free family film on Friday February 16 at 3pm.



**Andrew's Church**

## Coffee, cake and smiles!

**WE aim to be the friendly weekday heart of our local community, say the new joint-managers of the Coffee Shop at St Andrew's Church in Goldsworth Park Centre.**

"It will still be a great place to go for a wide variety of superb coffees, teas and other drinks, tasty breakfasts and snacks," say its new joint-managers, Libby Davis and Amanda Smith.

Libby added: "We get all ages here: from mums with babies and toddlers who enjoy our play area, to the elderly. We benefit from having lots of space, and many working people come here to socialise or discuss business while enjoying an Espresso, Cappuccino, Americano or Latte. Our coffees are prepared using some of the best coffee-making equipment available. And our new cooked breakfasts are proving very popular!"

Amanda said: "Some regular customers who regularly lunch here say the most important thing to them is the friendliness they always experience. So while our food is delicious and good value, it's the people working behind the counter and our volunteers who clear tables and chat to customers who make it really special.

"The Coffee Shop is subsidised by St Andrew's - in other words from money donated by ordinary members of the church - as a service to the local community, so it's important we are here with a friendly welcome when the majority of customers want. We recently revised our opening hours to 9.30am to 2.30pm, Tuesdays to Fridays, which means we are open when practically all our regular customers want us."

Libby added: "We want to continue to offer a welcoming place in the heart of the community where everyone can come during the week to enjoy high quality drinks and food, and socialise in friendly, comfortable surroundings. We look forward to greeting new customers who are readers of Goldsworth News!"

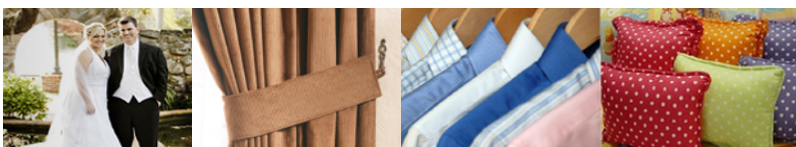
ROYER SLATER

• **OUR reporter, Royer Slater, will be in the Coffee Shop at St Andrew's on Thursday afternoons from 12pm-2.30pm. Royer said: "Please introduce yourself if you'd like to tell me anything or just chat about things generally - but no politics please!"**



WARM WELCOME – Libby (left) and Amanda

## Beacon House Dry Cleaning & Laundry Services



- Professional Dry Cleaning
- Evening and Wedding Wear a speciality
- Alterations and Repairs
- Key Cutting & Shoe Repairs

**01483 77 21 24**

7 Goldsworth Park Shopping Centre, Opposite **Waitrose**

[www.beaconhousedrycleaners.co.uk](http://www.beaconhousedrycleaners.co.uk)



# From the Lakeside



■ Roger Wescott is Goldsworth Park Angling Club secretary and fishing bailiff working in partnership with Woking Council to oversee fishing, monitor fish stocks and other wildlife, and keep the area clean and tidy.

**IT seems as though, almost every other week through this winter, we have been hit by storms and gales strong enough to cause structural damage throughout the borough, whether it's your garden fence that has ended up in a neighbour's garden or a fallen tree blocking a path or road.**

Have you noticed the amount of litter decorating bushes and hedgerows throughout the park, having been blown from waste bins like confetti?

We thought our big clean-up round the lake in November would be it until spring, but have been out in force twice since Christmas, clearing the deluge of branches and litter deposited on the banks of the lake – six truck loads I believe to date – and now, as I'm writing this, the wind is howling outside and I have just been told about another tree that has been uprooted. No prizes for guessing what we fishermen will be up to in the coming days. Mind you, it's a good way to keep warm and get some exercise on a cold winter's day.

At the angling club, we have a new fisheries officer, Alan, and his role is to help monitor fish stocks, support wildlife and organise general maintenance. Whether you are into fishing or not, if you have a passion for our open spaces and would like to get involved with some of the work we do round the lake or at Brookwood Ponds, give me a call on 07779 896393. From April 1, the dates of our work parties will be available on our website at [www.goldsworthparkanglingclub.com](http://www.goldsworthparkanglingclub.com). We are a friendly bunch of volunteers who would love to have more helping hands on board.

Apart from crazy weather, what else is happening at the lake? Well, I can tell you that Mr and Mrs Kingfisher and their three offspring are still with us and can be seen almost daily quartering the lake in their quest for a meal. Our family of swans are, surprisingly, still together. I had expected that, by now, the three youngsters would have been sent packing. Having said that, the cob has been very busy shooing off other young swans that have landed on the lake, suggesting he and his mate are preparing for a new brood in the spring. Cormorants still prove to be the bane of fish life on the lake,

munching their way through our fish stocks faster than nature or we can replenish.

But, despite the cormorant problem, just before Christmas, the club was able to introduce 100 tench, 300 chub and 20 carp to the lake and a further 200 Crucian carp and 100 tench to our ponds at Brookwood at a cost of several thousand pounds. We hope they will all settle into their new homes and grow to be adult breeding fish, helping to keep a healthy balance of fish stocks for the future of their species and the sport of angling, without which our waterways would suffer.



*IN YOU GO – restocking the lake in December*

## Badgers found on North Meadow

**THE main activity since November has been to progress our understanding of the wildlife in the North Meadow area, writes GERRY SMEESTERS.**

To this end, the West Surrey Badger Group has helped us to assess any activity by badgers in our area. A survey undertaken by one of their members in early January discovered positive evidence of badger presence.

The survey found a scent trail, unique to badgers, on the grassed area within the recreation ground along with other evidence. However, it was the discovery of a single badger hair that helped to corroborate all other suspected signs of badger activity.

This is great news for NGP. It is something we never envisaged six months ago when we embarked on our project, and it really demonstrates how nature can work within the confines of a heavily populated and used urban area.

The survey report has been shared with the Woking Council team responsible for open spaces. Badgers are a protected species so there will no doubt be actions and ramifications for some aspects of our initial project vision and aims. Safeguarding and preserving badgers from human disturbance will be a priority.

We have also made contact with the Surrey Bat Group who have offered their assistance to assess bat activity.

With the above and work already undertaken on botany, we can start to shape our plans for the area. If you are interested in following our news and updates or getting involved in practical work please contact me by email at [projects@ourgoldsworthpark.org.uk](mailto:projects@ourgoldsworthpark.org.uk) Alternatively, follow us through Facebook, Natural Goldsworth and Twitter @natgoldsworth





# Work and play at Slocock's

*IN our final extract from Fields of Memories by John Field, the author presents a picture of life at Slocock's Nursery up until its sale for the development of Goldsworth Park in the 1970's.*

**GRANNY FIELD had known next-door neighbours Fred and Maude Collyer for 60 years and I started helping Fred in his garden when I was very young.**

Fred, horticulture foreman at Slocock's recognised I was interested in gardening and asked if I wanted to go with him to the nursery during the week, an opportunity which I jumped at.

I soon was shown how to drive a dapple grey Shire horse called Jock by his handler Johnny Baker. Jock was a well behaved horse and often won the annual horse ploughing competition at the Chobham Autumn Show.

It wasn't long before I started to get a regular Slocock's pay packet too. I was so proud to be regarded as one of the men. Of course, I didn't get as much as they did but I was now one of them! I was about 11 at the time.

Tractors were slowly introduced on the nursery during the late 1940's. One of the first was a red David Brown. Its driver was Tom Watts, a tall thin chap who had served at El Alamein. I had my first experience of driving tractors on this machine. The Brown's were cumbersome for nursery work and soon changed for smaller Massey tractors which I also drove under supervision.

Slocock's pursued a policy of self-sufficiency for their business. They had a number of farms where bullocks were raised

for meat. The bullocks were kept in corrals of bales of straw from the wheat also grown by Slocock's. Manure was recycled onto the nursery fields.

The big summer event was the annual 'beano'. This was the workers' annual day trip to the seaside and, for some, the only visit in that year. Others, like the Stillwell family who were also nursery employees and who originated from London, went hop picking in Kent for their escape to the country.

During the summer nurserymen used to earn extra money hay making. Their favourite was working for pubs, which in that era had more extensive grounds than now. The upside was that landlords kept the men well plied with drinks plus they got paid well.

On one particular occasion, after a long day, the men were going back in the evening to finish a hay making job. The field had a stream and narrow bridge that crossed it. I had been driving the tractor over this bridge all day without incident, pulling long four-wheel trailers loaded with hay. However, I was not allowed to work in the evening!

The following morning nurseryman Bill Hockley was the subject of some leg-pulling. The previous evening he had driven off the bridge edge with the laden trailer ending up in the stream. That was the downside of pub related work. Fortunately, the only injuries were bruised reputations.

Aunt Doris continued to live with Granny and worked at the Woking G.Q. Parachute Company making parachutes, including ground-breaking work on chutes used to slow down planes on landing. For that time, she was well travelled abroad. In her spare time she treated me to lots of great days, including a flight over London, visits to Heathrow, then just a modest airport and subordinate to one at Croydon. One of the regular and much anticipated trips was to Chessington Zoo.

Most Sunday afternoons we would take a family walk across the nursery, often to the Basingstoke Canal. The towpath was kept in a reasonable state but the canal was falling into a state of disrepair. This was my favourite

walk not least because there was an old oil drum raft with a chain going from each bank so that you could pull the raft across. This was used by the nurserymen to get from their main buildings to the extended field system on the northern side of the canal. It was great fun.

Granny survived in her cottage without TV until the late sixties when I bought her one. At about the same time overtures were being made by the Council to move Granny out as preparation for the nursery sale and the development of the Goldsworth Park estate. However, she became unwell and had to go into a care home.

On July 6 1970, aged 88, Granny passed away. Aunt Doris moved to sheltered accommodation near Woking and died in 1986 aged 77. Granny's house, 82 Robin Hood Road, was eventually demolished to make way for Lockfield Drive.

*The GPCA gratefully thanks John Field for his kind permission to reproduce extracts from his book Fields of Memories.*



*HORSE POWER – Shire horse Jock and his handler Johnny Baker*



*FUN DAY – Aunt Doris with John at Chessington*



**LE DRAIG**  
**ELECTRICAL/PROPERTY**  
**SERVICES LTD**

**Checkatrade**  
Where reputation matters

**Electrical contractors & property maintenance services:**

- inspection & testing • fault finding
- consumer unit changed • lighting & power

**07799 098 200 / 01483 730 305**



[www.ledraigelectrical.co.uk](http://www.ledraigelectrical.co.uk)



**5 SHIRTS**  
**FOR ONLY £10** (Wash & Iron)



T & C's APPLY

We also offer:

**REPAIRS & ALTERATIONS**  
**KEY CUTTING**  
**SHOE REPAIRS**  
**WATCH BATTERIES**

**01483 77 21 24**



7 Goldsworth Park Shopping Centre, Opposite Waitrose

[www.beaconhousedrycleaners.co.uk](http://www.beaconhousedrycleaners.co.uk)





# Royal day at Park's hospice

## HRH The Countess of Wessex visited Goldsworth Park to officially open Woking Hospice in Denton Way.

The Countess unveiled a commemorative plaque, signed the visitors' book and said how impressed she was with the building and thanked all those who have contributed to make the new hospice possible.

As part of her tour the Countess met several patients and their families on the ward, including one who was celebrating her 70th birthday. Then when HRH visited the Bradbury Wellbeing Centre she was able to make a wish come true for day patient Tom Callaghan, who had always wanted to meet a member of the Royal family.

The Countess's visit concluded with the presentation of a bouquet of flowers by Chloe Boyes. Chloe, 13, was six when her dad was diagnosed with Motor Neurone Disease,

and she was just eight when he died. Chloe has raised over £2,000 for the hospice and is part of the hospice's bereavement support group for teenagers, Tommy D.

Jayne Cooper, CEO of the hospice said: "We were honoured and delighted that HRH The Countess of Wessex led our celebrations and, after a period of huge transition, officially opened our new Woking Hospice. During her visit Her Royal Highness met with patients and their loved ones, our team of staff and supporters, without whom we could not deliver all we do.

"We have been on an incredible journey over the last two years and I am extremely proud of all we have achieved. None of this would have been possible without our staff and volunteers, but also because of the generosity of so many wonderful supporters.

"This is a time to celebrate and I am excited about the future and being a critical part of leading the way in hospice care for many more thousands of patients, their carers and families.

"We provide very personal and unique care and support plans for patients who often have very complex needs. Our new build means we are now able to provide the very best in facilities as well as creating a hub and centre of excellence in palliative care that better enables us to increase the effectiveness of our services to the changing and growing demands of our communities across Surrey."

The hospice cares for around 1,400 patients each year and 70 per cent of that care is delivered at home or in care or nursing homes.

All the services the hospice provide are free and it needs to raise over £8million a year to continue its work.

For more information visit [www.wsbhospices.co.uk](http://www.wsbhospices.co.uk)



WELCOME – the Countess is greeted by the Mayor of Woking, Cllr Graham Cundy and hospice CEO Jayne Cooper



SAY IT WITH FLOWERS – Chloe with the Countess

## A personal view

**HAVE you spotted the guy in Goldsworth Park with a blue wheelchair, sometimes riding, sometimes (painstakingly) pushing? If you ask why he chooses the more difficult option, he says "it's because I can."**

It's easy to moan about things we can't do instead of celebrating and doing what we can, and to grumble about things we don't possess instead of looking around and being grateful for what we already have.

Adverts and articles try to persuade us what we should buy, where we should go and how we should think. Clever marketers aim to make us believe we're second-rate if we're not wearing the latest clothes, using the latest gadgets and showing off the "smartest" phone.

People say they're unhappy or depressed because stories about the rich and famous make them feel inferior. They crave celebrities' success and fortune, their lifestyles and possessions.

And as we've seen over the last couple of years, people are increasingly influenced by what they read on social media, which was

successfully exploited by Corbyn supporters during last year's General Election but ignored by the Conservatives.

We're never out of the marketers' sights; even when we get the "special" something we craved, happiness is short-lived because we're already being persuaded we need something else: the latest style, the newest model, the smartest gadget.

So to be happy, just be content with what you have and what you're able to do! Don't complain when what you already have is much more than most people in the world will ever have or achieve.

Don't complain too much when your arm aches or your leg is painful. Many would be grateful for limbs, or for them to work as well as yours. Don't fuss when a baby's cry disturbs you in the shops or a café. The deaf and blind would be delighted to hear and see it.

When you start counting your blessings instead of moaning, your whole life will be turned around. So, cultivate the habit of being grateful for every good thing that comes to you and for all you achieve. Thank people who are good to you. Whether you have

faith or none, just try saying "Thank you God" that your life even at its lowest is much better than that of most people in the world. "Thank you" is the best prayer anyone can say: it expresses gratitude, humility and understanding.

And by the way, if you encounter that man struggling with the blue wheelchair somewhere around the Park, say "hello", for he might be your contented Goldsworth News correspondent – Royer Slater.

Royer Slater



**CONGRATULATIONS** to Hannah, Woking Council's Neighbourhood Officer for Goldsworth Park, who was married recently. She is now Hannah Rees and can be contacted at [hannah.rees@woking.gov.uk](mailto:hannah.rees@woking.gov.uk) or on 01483 743451.

# Walking towards good health

**FANCY a good walk? One of the great things about Woking is its many green spaces, so you don't need to leave the Borough for a pleasant stroll.**

And if you've over-indulged during the winter months you'll burn off some of those excess calories!

Woking has parks and recreation grounds, as well as countryside sites which combine open heathland, woodland and waterside habitats. They offer lots of opportunities for walks, from a gentle half-hour amble to a stimulating 90 minute stroll. You don't need any fancy equipment to hit the pavement, and you can do it anytime. So why not stretch your legs and explore the parts of Woking you haven't seen?

The Explore Woking leaflet produced by Woking Council contains plenty of ideas on how to enjoy local green spaces. There's also a Greenspaces Map, to help you discover new areas of Woking. You can download both from <https://tinyurl.com/y9e6q2jr>

If you'd like to take a walk in and around the district with like-minded locals, take a look at the free walks organised by Woking and Runnymede Health Walks. This is the local scheme under Walking for Health, England's largest network of health walks. It aims to help people across the country lead a more active lifestyle, leading to improved mental and physical well-being.

Walking for Health says half of all adults are not active enough to benefit their health. This means that they are at risk of developing serious illnesses such as diabetes, heart disease and cancer.

Tasha Faddery, Walking for Health Coordinator, based at The Cornerhouse in Woking, said: "Woking and Runnymede Health Walks

are free, fun and friendly – perfect to help you get active and meet new people."

They offer 30 minute 'starter' walks in Woking on Tuesdays, and walks of 45 to 90 minutes on Wednesdays. All finish at a café where you can stay for refreshments and a chat.

The full Health Walks programme is at <https://tinyurl.com/ydeosggo>

ROYER SLATER



STEPPING OUT – Heather Farm, Horsell Common



## Councils' News



### Community groups awarded over £1.6 million

LOCAL community groups and voluntary organisations are set to benefit from over £1.6million in financial support. The funding comes from Woking's Community Grants Scheme for the 2018/19 financial year and is an annual process through which the Council help local voluntary and community projects.

If your organisation missed out this year you can apply for grant funding for the financial year 2019/20 online at [www.woking.gov.ukcommunitygrantsscheme](http://www.woking.gov.ukcommunitygrantsscheme) from the end of June 2018 until 7 September 2018. For further information about grant funding, please contact Frank Jeffrey, Woking's Democratic Services Manager, on 01483 743012, email [frank.jeffrey@woking.gov.uk](mailto:frank.jeffrey@woking.gov.uk) or visit [www.woking.gov.uk](http://www.woking.gov.uk)

### Surrey tops recycling league table

NEW figures show that Surrey was joint top of a recycling league table in 2016-17. The data from Defra shows that both Surrey and Oxfordshire recycled 57.7% of household waste, the highest recycling rate of the 32 two-tier authorities in England.

Surrey has also seen a reduction in the amount of waste generated. The drop from 451.6kg to 439kg per person is well ahead of a target to achieve this by 2020.

The target is part of the Surrey Waste Partnership's joint strategy for reducing waste and increasing recycling in the county. The partnership consists of the 11 district and borough councils that collect waste and recycling and Surrey CC which is responsible for disposal.

### New bus lane for Victoria Way

WORK has begun on a new bus lane and bus stop along Victoria Way. Designed to improve public transport, the lane will run northbound from the Lockfield Drive junction to the pedestrian crossing by The Lightbox.

A new bus stop will be created by the Bedser Bridge to provide access to Woking Town Centre. The existing left-hand lane along Victoria Way will be closed until April while the work is carried out.

### Site purchased for sheltered housing

A FORMER car dealership in Old Woking has been purchased by Woking Council to provide sheltered accommodation for older residents, subject to planning consent.

It is proposed that the former Ian Allan Motors dealership, which currently has planning permission for 24 houses, is developed as a 60-flat residential sheltered housing scheme for residents aged 65 and over. The site was purchased for £3.75million. It is expected that those living in the new development will live in self-contained flats with access to care and support that will support independent living.

Cllr David Bittleston, leader of Woking Council, said: "With an ageing population, it is vital that we make the right investments now to meet our future housing needs for our older residents. Once complete, the scheme will enhance our existing portfolio of housing options available to older people.

"Ideally situated in the heart of Old Woking, the scheme will offer a real sense of community and unrivalled access to local amenities including shops and services, as well as in the long-term creating local jobs for local people."





**CONGESTION in the community car park at the shopping centre appears to have eased now that the Christmas rush is over but there are still issues to be addressed according to this issue's correspondents.**

Dear Sir

I work in the NHS health centre in Goldsworth Park. I know the car park is extremely busy due to the new hospice being open, also the new disabled bays (which I am all for as I think it is an acceptable place to put these bays for any of the NHS health care visitors with disabilities).

Unfortunately, I have noticed on my going in and out at different times of the day that the car park is so full that customers or patients have to go around the car park more than once, they do a dangerous manoeuvre inside the car park, just before you go past the petrol garage, they will turn right and go back straight into the car park as though they had come from the entrance properly, sometimes they won't indicate (they don't go all the way out and around the roundabout nearby and back again).

I also suspect that some customers park in the NHS staff car park, which is busy enough as it is with all the staff. I write to you as I have noticed cars parked by the kerb where the grass bit is on the main road just in front of the car park, this is also dangerous.

I know, it is very difficult to just get new bays for parking but I don't know if there is anything that could be done to resolve this congestion? I hope you may find some resolution for this issue. That said, I appreciate what has been done so far in the car park for disabled users.

*Lindsey Taylor*

Dear Sir

I note the article in the Goldsworth News which mentions the criticism that Hospice staff are taking up too many spaces in the shopping centre car park and feel this is a bit disingenuous. Even before the Hospice opened there have always been busy periods where the car park has been full and my customers at the Fox & Flowerpot have complained to us about it for years. You must also consider that Hospice staff have been relocated here from Woking and many do not live on the Park so have to drive to work – This should have been addressed by the planning committee when the initial plans were submitted.

Other Unit staff (Waitrose, Herbies and even our pub) are also exempt from the 3-hour waiting restriction and have been using the car park for years and also Costa has increased the trade of parents with young children who take up the bulk of the parent & child spaces at particular times.

There was clearly a need for more disabled parking but I am not sure there was sufficient demand for all of the additional bays which have taken able-bodied motorists parking slots, indeed often I drive down and NONE of the new slots are occupied. The new parking slots over by Denton Way have also caused problems for cars turning left towards our pub as it is difficult to see cars exiting when turning left.

*Kind Regards, Ian Cox  
Fox & Flowerpot*

Dear Sir

It has become a lot more difficult to park at Waitrose over the last couple of months and I can only assume that the extra pressure has been generated by the new hospice and, to a lesser extent, by the reduction in spaces following the creation of the additional disabled slots.

I have lived in GWP for 30 years and until recently have never had any difficulties finding a space in the car park, however, frequently I now have to drive around waiting for a space to become free as it is often full. Spaces do become available quite quickly so this is not an issue in itself but it does highlight the ongoing problem of the odd layout of the car park. If you choose either of the first two aisles you are forced to exit if there are no spaces in your chosen aisle; you cannot drive around again to try elsewhere. Also, you can only try the spaces down by the pub if you choose aisle 3, but then you cannot then try aisles 1 & 2 if there are no spaces there. You can only enter the garage by going through the car park and down aisle 3 – fine if you know this, but there are no signs for those who don't.

The only alternative to exiting and re-entering if you don't find a space in the first aisle that you choose is to perform a hard right turn from the exit lane, if there is no traffic. I have had to do both myself, and neither option is satisfactory and can be dangerous.

Whilst it is great news that GPCA has successfully campaigned for the additional disabled parking bays at Waitrose car park, is it not now time to press for a re-design of the car park layout?

The best solution would probably require a full re-modelling of the car park, which would be expensive. However, a compromise solution involving one or more of the following could be undertaken which would improve the situation (1) making the 'cross aisle' adjacent to the petrol station 2-way, (2) reversing the direction of flow on one of the aisles, (3) adding a mini roundabout near the exit to allow you to turn back into the car park safely.

*RL, Goldsworth Park*



Email us your views at [editor@ourgoldsworthpark.org.uk](mailto:editor@ourgoldsworthpark.org.uk)



A person is running through a grassy field at sunrise. Two dogs, a Dalmatian and a black dog, are running alongside them. The sun is low on the horizon, creating a warm, golden glow. The scene is captured from a low angle, emphasizing the movement and the natural setting.

**New Year,  
Fresh Start.**

**We're ready, are you?**



**SEYMOURS**  
SEYMOURS-ESTATES.CO.UK

**#LetsGetMoving**

**SEYMOURS WOKING**  
12 COMMERCIAL WAY, WOKING,  
SURREY, GU21 6ET

**SALES & LETTINGS**  
01483 757 700

**EMAIL ENQUIRIES**  
SALES@SEYMOURS-WOKING.CO.UK