

GOLDSWORTH NEWS

June 2019 – Issue 168



GPCA
Goldsworth Park
Community Association
www.ourgoldsworthpark.org.uk

Summer edition

Enter the Dragons!

See Page 8



Picture: STEVE WILLSON

Volunteer award for GPCA Chair Irene Watson

See Page 4



1st Goldsworth Scouts celebrate their 40th anniversary

See Page 9



Police seeking pub fire witnesses

See Page 3

SUPPORTING OUR LOCAL COMMUNITY FOR OVER 50 YEARS

Buy online at rsmdomesticappliances.com

YOUR LOCAL DOMESTIC APPLIANCE SUPERSTORE

SALES • ADVICE • REPAIRS

Visit our showroom today!



GREAT
OFFERS
IN-STORE

WITH
euronics
COMPETITIVE
PRICES



RSM
Domestic Appliances
FRIENDLY SERVICE • BIG SAVINGS • FAST DELIVERY

SUPPORT YOUR LOCAL SHOP
High Street, Knaphill
Also in Bookham and Ashted

NEW SHOWROOM NOW OPEN:
TATTENHAM CORNER, EPSOM

Call 01483 475000



CONVEYANCING AND PROBATE PRACTITIONERS

We offer the below services to our clients, conducted in a friendly, professional, supportive manner. We are excellent communicators using both technology and traditional standards of service to suit our clients.

PROPERTY LAW SPECIALISTS

SELLING AND/OR BUYING A PROPERTY

REMORTGAGES

TRANSFERS

PROBATE

WILLS

DECLARATION OF TRUSTS

LASTING POWERS OF ATTORNEY

COMMISSIONERS FOR OATHS

Please telephone or email for a free estimate or for further information.

Business Hours:

9am to 5.30pm Monday to Friday

6 Anchor Crescent, Knaphill, Woking, Surrey GU21 2PD (Free parking)

T: 01483 485700 F: 01483 485701 E: info@lyonsandcompany.co.uk



Looking for a day care nursery?

Toad Hall Nursery, Woking

Our fantastic Woking OFSTED registered nursery has been purpose-built to provide a welcoming, friendly and spacious environment. With beautiful gardens to play in - come and see us to find out how we support your child to learn and develop!

Reasons why parents choose Toad Hall Nursery:

- Funding available for 2-4 year olds
- All staff are First Aid trained
- Large outdoor area for exploring and fun
- Corporate and emergency service staff discounts
- Individual routine for babies with nappies and wipes included as standard
- Flexible full-time sessions to suit you
- All food is nutritious, fresh and well-balanced

* Please note that 2 year old funding is subject to criteria - please ask for more information.

As strong advocates for the Early Years Foundation Stage framework, we also offer **FREE extra activities** such as music and various sports to enhance learning!

To arrange a visit or request a brochure, just contact:

Wishbone Way, Goldwater Lodge, Goldsworth Park, Woking GU21 3RT
Tel - 01483 486116 Email - woking@toadhall-nursery.co.uk
facebook.com/wishbonewaynursery

Follow us @ToadHallGroup
www.toadhall-nursery.co.uk
Recommended on daynurseries.co.uk



CELEBRATING 15 YEARS OF CHILDCARE

Alan Greenwood & Sons

Independent Family Funeral Directors



We offer a Caring and Compassionate Service
24 hours a day 365 days a year
The latest Jaguar or Mercedes Funeral Vehicles
Golden Charter Pre-paid Funeral Plans
Home Visit Arrangements
We will not be beaten on price
Direct Cremation £950 T & C'S APPLY

Please Visit Our Website for Full Details of Our Branches and Services
and also to View All Our Local Obituaries

www.alangreenwoodfunerals.com



1 Anchor Hill
Knaphill
GU21 2HL

01483 487 889

knaphill@alangreenwoodfunerals.com

OPEN SATURDAY MORNINGS 09.00-12.00

GOLDSWORTH NEWS

GOLDSWORTH NEWS is the magazine of the Goldsworth Park Community Association and is distributed free to approximately 5,000 homes and organisations throughout Goldsworth Park and the surrounding area.

EDITORIAL TEAM:

George Binyon (Editor), Royer Slater, Michael Farlam and Robin Smith.
editor@ourgoldsworthpark.org.uk

Published by the
Goldsworth Park Community Association
Designed and printed by Knaphill Print

ADVERTISE IN GOLDSWORTH NEWS

Contact:
gnadverts@ourgoldsworthpark.org.uk

DISTRIBUTION

Linda Hill, 5 Newsham Road,
Goldsworth Park GU21 3LA.
Tel: 01483 835183
Email: hilllinda5@googlemail.com

Please submit articles for the next edition
to: editor@ourgoldsworthpark.org.uk

GPCA MEETINGS

Meetings of the Community Association
are held at Goldwater Lodge.

Next meeting: Wednesday July 24, 7.30pm.

All residents are welcome. If you would
like to be put on the mailing list for
minutes and other information,
Email: chair@ourgoldsworthpark.org.uk
or call 01483 714096.

LOCAL COUNCILLORS

Conservative councillors hold a surgery at
Costa's in the shopping centre on the first
Saturday of the month from 9.30 to 10.30am.

**Councillors: Ann-Marie Barker WBC
and James Sanderson WBC (Lib Dem).
Chitra Rana WBC, Saj Hussain SCC & WBC
and Colin Kemp SCC & WBC (Conservative).**

DISCLAIMER

*No responsibility for the quality of goods or
services advertised in this magazine can be
accepted by the publishers, designers or printers.
Advertisements are included in good faith.*

*No part of this magazine may be
reproduced in any form without the express
prior permission of the publishers.*

*The publishers do not necessarily agree
with the views expressed by contributors nor
do they accept any responsibility for errors of
interpretation in the subject matter of
this magazine.*

*All reasonable care is taken to ensure
accuracy in preparation of the magazine but
neither the publisher nor printer can be held
legally responsible for the return of unsolicited
manuscripts, art work or projects. Whilst
every care is taken, no responsibility can be
accepted for the safety of material submitted.*



Please read and recycle

Views from the Chair

HOW time flies — here I am, already writing my “Views” for the summer edition of Goldsworth News although, for the last week or so, it has been colder than when I was writing my “Views” for the spring edition.

I am pleased to say that we had a very successful litter pick at the end of March with a good turnout, once again. Woking Council has been offered funding to provide community groups with their own litter-pick sticks and hi-viz tabards, and I hope that, by the time of our next pick on October 12, we will have our own equipment and hi-viz tabards with our logo on.

Our meeting on April 23 was also well attended and proved to be quite lively at times. I reported that there had been a change of plan with our Charitable Incorporated Organisation constitution and that we now proposed to become an Association CIO, in order to give residents more involvement in the management of the GPCA.

I have now submitted our application to the Charity Commission but they have a significant backlog and it might be August before we hear anything. There was much discussion about tree cutting around the lake and in connection with planning applications.

The next meeting of the GPCA will be at 7.30pm on Wednesday, July 24 in the Community Hall at Goldwater Lodge. Please note the change of day; Wednesday is more convenient for some of the Committee and regular attenders as well as for Dianthus Trading who now manage the hall. With luck, I may have news about our application for CIO status. I look forward to seeing many of you then.

If you have any issues of general concern or would like to be involved in the work of the GPCA, please contact me through this magazine or email chair@ourgoldsworthpark.org.uk

www.ourgoldsworthpark.org.uk

Irene Watson, GPCA Chair



@ourgpca



facebook.com/goldsworth.park

Cllr Sanderson's Park agenda

NEW Woking Councillor for Goldsworth Park James Sanderson wants to see improvements in the local environment with more recycling facilities, better road safety and a tough approach to fly-tipping.

Liberal Democrat James was elected on May 2 with a majority of 277. He replaces long-serving councillor Ian Eastwood, 74, who did not stand for re-election after 28-years service.

James told the *Goldsworth News*: “Goldsworth Park is a nice place to live but I'd just like to make it a more pleasant environment for local residents.

“I'd like to say thanks very much to everyone who supported me during the campaign, but I am here to represent all the residents of Goldsworth Park. It was a pleasure to speak to so many people in the run up to the election regardless of whether they supported me or not.”

James grew up in Woking, is married to Alison and they have four children who all attended Goldsworth Primary School. James is a qualified chartered accountant and works for a financial services company in London.

Before the local boundary changes James was a councillor for Goldsworth East. He has experience as a primary school governor, as treasurer of a bereavement and homeless charity and director of a housing association. James is a member of the Lakeview Community Action Group.

Prior to the election James successfully campaigned to get improvements to the pedestrian crossing on Bampton Way. Surrey County Council is now committed to spending money on widening the traffic island by the shopping centre.

James said: “I am delighted Surrey County Council has listened to our concerns about road safety on Bampton Way. The current pedestrian crossing and traffic island are not good enough. A new and larger island will be significantly safer.”

Robin Hood fire appeal

SURREY POLICE are investigating the cause of the fire at the Robin Hood pub on Sunday May 12 at around 6pm. They are keen to hear from anyone who may have seen anything suspicious in the area around the time of the incident, or anyone with any other information, to contact them as a matter of urgency. If you can help, please call 101, quoting crime reference number PR/45190049280.



ELECTED – new Goldsworth Park representative Cllr James Sanderson

GPCA public meeting, April 23

CHAIR Irene Watson began the meeting with the news that new Trustees had been recruited and would come on board when the GPCA was granted a change in its charity status to a Charitable Incorporated Organisation (CIO).

The Trustees are Chris Martin (vice chair), Tina Hartley (treasurer), Celia Young (secretary), George Binyon (editor, Goldsworth News), Gerry Smeesters (project manager, Natural Goldsworth Park) and Cathy Salmon (social media editor and fund raising).

Irene explained that it was felt that the GPCA had been misadvised about the type of CIO that was appropriate and, on further reflection, believed that an Association CIO, where the residents who become members can elect the Committee and vote on the Constitution etc., was right for the GPCA. The application has been sent to the Charities Commission, but it will be some time before it is considered as they have a significant backlog.

Treasurer's report

Tina Hartley listed figures on the period from June 2018 to March 31 2019 which included the time when the GPCA managed the Community Hall. There was a loss of £6,972.00, much of which was attributable to the costs of redecorating the premises prior to surrendering the lease. Small losses from the production of Goldsworth News were being made up now that new arrangements for advertising sales are in place.

Communications

Editor George Binyon, explained that the community magazine, Goldsworth News, is now published quarterly. He thanked Royer Slater, Revd Kate Wyles, Gerry Smeesters and Roger Westcott for their regular contributions.

Cathy Salmon reported that there are now 230 members of the GPCA Facebook group.

Natural Goldsworth Park

Gerry Smeesters reported that there would be bat trapping in Tracious Copse by the Surrey Bat Group on May 15. This was to identify species present in the local habitat.

Gerry said he had been liaising with Sythwood School with an aim of encouraging groups from the school to be taken out onto North Meadow. He is also hoping for some engagement from Beaufort School. He would appreciate some ideas from the public for projects/activities in the woods – being mindful of the need for recognition of the presence of badgers, bats and other wildlife in the area.

Gerry expressed dismay at seeing tree surgeons, on behalf of Woking Council taking down mature trees round the lake. A particular concern was this was being done during the nesting season. Geoff McManus, Assistant Director, Woking Council, responded by advising that there had been correspondence with experts and that willow trees, in particular, are now of an age that they were becoming diseased and dangerous, and there was a responsibility for public safety.

The lake

Roger Westcott, GP Angling Club secretary, explained that the unusual colour of the water of the lake is caused by algae, which occurs naturally at this time of the year, is harmless to animals, and will disappear later in the year. The dates for the lake working parties are displayed on the Angling Club website.

Community Matters

There was a litter pick in March organised by Pauline Eastwood and another is scheduled for October.

Irene said she had raised the issue of dangerous parking in Clifton Way, at the junction with Armadale Road, with Surrey CC and it has been added to their Parking Review list.

Geoff McManus advised that the problem of dogs out of control should be reported to WBC, but that controls are difficult to enforce unless regular offenders can be identified.

Gary Rimay-Muranyi of Dianthus Trading said he is investigating the possibility of opening the snug bar in the community hall as a café on some mornings during the week.

Please contact secretary@ourgoldsworthpark.org.uk if you would like a copy of the full minutes.

Chair Irene's volunteer award

IRENE WATSON has been awarded a Surrey County Council Volunteer Service Award for her contribution to the community as Chair of the GPCA.

Surrey CC Vice-Chair Helyn Clack presented the award to Irene at a ceremony at County Hall in Kingston. Irene was nominated by local Surrey and Woking Councillors Saj Hussain and Colin Kemp.

Irene, who was accompanied at the presentation by her husband, former GPCA Chair Ian Rickard, said: "It was quite a surprise to be invited to a reception and buffet supper at County Hall, Kingston,



PRESENTATION PARTY – Irene (centre) with, from left, Helyn Clack, Cllr Saj Hussain, Ian Rickard and Cllr Colin Kemp

and to receive an award in recognition of my volunteering work in the community.

"It was a very special evening and I feel privileged to be identified as one of the group of volunteers who have made a difference in their local areas, who also received awards — a certificate and a medal – that evening.

"I would like to thank Colin Kemp and Saj Hussain for nominating me and for all their support over the years."

The award citation read: "Irene and her husband Ian between them have run the GPCA as well as Goldwater Lodge. Over the years this was a very proactive group running many community events but in recent times the few volunteers found it difficult to manage, but under Irene's leadership the group managed to arrange fundraising events. She worked with Woking Council when the Lodge burned down, to have it rebuilt and brought it back into use for the community.

"Irene also played a role in saving the green area within Goldsworth Park from being used as sports pitches and raised awareness of the amount of wildlife that live in the park and this work continues.

"At the end of last year the situation with the group came to a head when not enough trustees could be found and the Association was in danger of closing down. Through her determination Irene refocused the aims of the GPCA and recruited more trustees. The group now has a new lease of life and the future for the GPCA looks good."

Next GPCA meeting, Wednesday July 24, 7.30pm Goldwater Lodge

Tree surgery put on hold



NATURAL GOLDSWORTH PARK update by project manager GERRY SMEESTERS.

Tree Felling: Geoff McManus, Assistant Director of Woking Council, has informed me that the Council is suspending its tree felling activity around the lake until the end of the bird breeding season. NGP welcome this move. Therefore, great news for birds but felling will restart after the summer and there are no proposals for replanting gaps left by the felled trees.

NGP – Next Phase: Organisers / Co-ordinators required: Who can help me develop some ideas for North Meadow's woodland or meadow areas, and is willing to champion and develop specific options, whatever they might be?

NGP has been running for 24 months. We have some great information about the flora and fauna on the habitat but to date we have made no plans for enhancements to the habitat. Do you: a) have some spare time, b) a love of the great outdoors and nature, and c) want to make a contribution to the wellbeing of our community? Give me a call to discuss and find out more.

Horsell Garden Safari, June 23: North Meadow is one of the 2019 destinations for those joining the Safari, which is now an annual fixture in the calendar of the Horsell Residents Association. The inclusion of North Meadow was welcomed by the Safari organisers because it promises to provide a broader nature dimension to the garden environment that is usually offered.

I will provide two walk and talk sessions on the 23rd to those subscribing to this charity fund-raising event. If it is well received, NGP may repeat the walk and talk to promote awareness for our own project but directed to Goldsworth Park residents.

North Meadow nature: The Royal Horticultural Society announced a new survey in which all people can participate. Xylella bacterium is a disease killing millions of olive plants across Europe and threatens many other plant species. Task: Look for bubbles hanging on grasses, trees or garden plants, this could be on North Meadow or in your garden. The bubbles are the tell-tale sign of the Spittlebug.

Scientific evidence has revealed a link to the spread of Xylella and the Spittlebug. The

survey aims to build up a national picture of Spittlebug presence across the UK. The survey is open until the autumn. Location and date of the sighting is needed to complete the survey, which can be found at www.brc.ac.uk/irecord/xylem-feedinginsects

Field horsetail:

In late April I found this growing on North Meadow. A strikingly sleek and unique plant during its initial growth stage and referred to as a 'living fossil' because it reproduces by releasing spores not seeds. Some varieties are used in herbal medicine but for gardeners it is a problem plant. Its rhizomes (roots) are deep beneath the surface and capable of creating new shoots. On North Meadow, controlling field horsetail is something that may have to be considered as a priority before it gets out of hand.



Contact Gerry on 07899 794302 or email projects@ourgoldsworthpark.org.uk

Wildflowers are blooming

WOKING COUNCIL has chosen four more areas on Goldsworth Park for their borough-wide wildflower planting scheme.

They are from the Littlewick roundabout to Creston Avenue, Clifton Way to the Robin Hood roundabout, the Bampton Way junction with Lockfield Drive and the Littlewick roundabout to Sythwood.

Last year two new locations along Lockfield Drive were chosen for wildflower planting, between the Littlewick roundabout and Kirkland Avenue and Clifton Way and the Robin Hood roundabout.

The Council's environmental partner Serco sowed these with a colourful mix of perennials, annuals and grasses, of types recommended by the RHS Plants for Pollinators initiative. Despite being tested by the summer heatwave, the wildflowers bloomed beautifully.

These added to the popular established wildflower growing which continues on key roundabouts and in Woking Park each year.

Following removal of grass and weeds and roto-vation of the soil at the new sites, Hope and Spring Flower seed mixes are being sown on the wider grass verges. Both are RHS Plants for Pollinators. Hope is a multi-coloured perennial mix including poppies and cornflowers as well as meadow plants.

For more information go to www.woking.gov.uk/naturalwoking

ST. JOHN'S FOOT CLINIC



TIME TO WAVE GOODBYE TO VERRUCAE

**Introducing Swift – the breakthrough treatment
for stubborn warts and verrucae**

Unlike cryotherapy, salicylic acid and laser, Swift does not break the surface of the skin and eliminates the need for bandages and dressings – leaving you to carry on your day as normal.

Now available at St John's Foot Clinic.

Give us a call for details on **01483 715771**
or email us at info@stjohnsfootclinic.co.uk for full details



www.stjohnsfootclinic.co.uk
St John's Health Centre,
Hermitage Road,
St John's, Woking, GU21 8TD



Willowmead Homes Ltd
Building & Property Services

**All aspects of Brickwork / Groundwork / Alterations
through to Bathrooms / Kitchens / Decorating**

See our web site for full details:

willowmeadhomesltd.co.uk

All work Guaranteed & References On Request

01483 825146 / 07842 552 448



**FREE
QUOTATIONS
& ADVICE**

A personal view

Royer Slater



WE have a lot of trees here! Perhaps you take them for granted if you were brought up locally, but imagine my delighted amazement at seeing so many trees when I moved to Woking from Cambridgeshire 36 years ago.

Many other Surrey converts I've met over the years agree.

Surrey is Britain's leafiest county. That was the finding of an exhaustive tree count using aerial mapping technology imagery in 2014. Our neighbour, the Surrey Heath district, was the area most densely populated by trees being 40 per cent covered.

My most surprising views of Woking were notable because the town was barely noticeable below the tree canopy. I recall looking southwards with amazement over Woking from Staple Hill on Chobham Common: just a sea of trees stretching to the North Downs, with only Export House (then known as the BAT Building) raising its head above the canopy to mark Woking. Of Goldsworth Park there was no sign.

Similarly, looking north from the North Downs' ridge at Henley Fort, you see only a tree canopy in the space occupied by Goldsworth Park. The towers in Woking town centre are the only visible evidence of habitation among a sea of trees between Guildford in the foreground and Heathrow Airport in the distance.

Our trees are among what makes Goldsworth Park a special place to live and relax. But they're so much a part of our scenery we may not notice them. An acquaintance recalls during his search to relocate somewhere from London he chose to live in Goldsworth Park after

noticing its many trees while passing through the district.

Goldsworth Park's leafiness is thanks to the planting of thousands of saplings when the estate was developed 30-40 years ago, and the retention of many mature trees on this former nursery land. Among the variety of species planted, fruit trees were placed here and there, to provide opportunities for foraging: if you know the location of any of them, please tell Goldsworth News.

Among our many arboreal delights, is it possible we have a special tree worthy of being entered for the Woodland Trust's Tree of the Year? Now in its sixth year, the competition highlights and celebrates special trees across the UK. It might be unusual-looking or remarkable for its age, or have a notable story.

Last year's English winner, Nellie's Tree – three beech trees grafted together into the shape of the letter "N" – from Aberford near Leeds, stole hearts with its century-old story of love and courtship.

Any individual, group or organisation can nominate a tree and share its story at www.woodlandtrust.org.uk/treeoftheyear until July 19 2019. You can also share your special trees on Twitter and Instagram using the hashtag #TreeOfTheYear.

Royer writes every week in the Woking News & Mail. He adapted this article from his feature in the paper on May 16 2019.

Andy's gets a taste of class

CELEBRITY chef Jamie Oliver has made his mark on Andy's Community Café in Goldsworth Park Centre, writes ROYER SLATER.

In May the café's joint-managers Amanda Smith and Mary Incorvaia attended the Tesco Community Cookery School, an initiative between the supermarket and Jamie who has campaigned to cut supermarket food waste and for schoolchildren to eat healthily while cutting out junk food.

The school was held at Tesco's HQ in Welwyn Garden City. Amanda and Mary were trained with recipes designed by Jamie and worked with Tesco's development chefs.

Amanda explained: "The course is for places like Andy's that use surplus food donated by supermarkets including Tesco because it has reached its 'best before' date. We were shown how to prepare

healthy and nutritious meals out of donated food, and to make the best use of what we've been given."

Since its relaunch as a community cafe last year Andy's has offered a pay-as-you-feel menu: the meals available each day are displayed on a blackboard, with no marked prices.

Mary explained: "Customers simply put into a collection box whatever they can afford to pay. In the case of needy and vulnerable customers, the meal we serve may be the only decent meal they get that week."

Andy's Community Café is inside St Andrew's Church, next to the shops at Goldsworth Park Centre. It is open from Mondays to Thursdays during school terms, 10am to 2.30pm.

For more details visit www.standrewsgwp.org or call the church office on 01483 723879.

Beat the Draughts...



without the overdraft.

Beautiful doors, windows and bi-folding doors with precision and care



For a free, no obligation quotation please call today on 01483 474333

**Unit 2, Robin Hood Works, Robin Hood Road, Knaphill,
Woking, Surrey GU21 2LX Tel: 01483 474333 www.windsorwindows.net**



**Windsor
Windows**

From the Lakeside



■ Roger Wescott is Goldsworth Park Angling Club secretary and fishing bailiff working in partnership with Woking Council to oversee fishing, monitor fish stocks and other wildlife, and keep the area clean and tidy.

IN mid-April the angling club held its first work party for 2019 round the lake.

The volunteers trimmed overhanging branches near the platforms and cut out hardwood briars from the reed beds along the margins allowing much needed light for healthy growth.

Marginals such as iris, canary grass, reed mace and water mint soon suffer through lack of light causing dieback which will in time lose habitat for wildlife and weaken the bank margins.

As some of our wild fowl had started their annual nest building on parts of the waters' edge some of our planned work had to be delayed. However we did manage to get much of the bank looking good and most of the platforms top dressed with wood chippings.

Unfortunately just a week or so after all our efforts we had several days of high winds that brought down many branches from the willows. We will in due course get those cleared. It's a big garden to look after so there is always something that needs attention!

Our next scheduled work party dates are Saturday and Sunday July 20 and 21. Anyone wishing to lend a hand will be most welcome, either contact the angling club or the GPCA for more details.

On April 1 the Goldsworth Park Angling Club entered into its fifth year of fishing management on the lake and ponds at Brookwood Country Park. In that time the club has gone from strength to strength, having achieved a membership of over 150 and more than 1,000 day members a year. Subscriptions have enabled us to purchase a comprehensive tool supply for those work parties, including a boat for those hard to reach jobs.

We have successfully held four angling teaching programs and are looking forward to our next one which will be held in August. Details will be available on the club's website nearer the date.

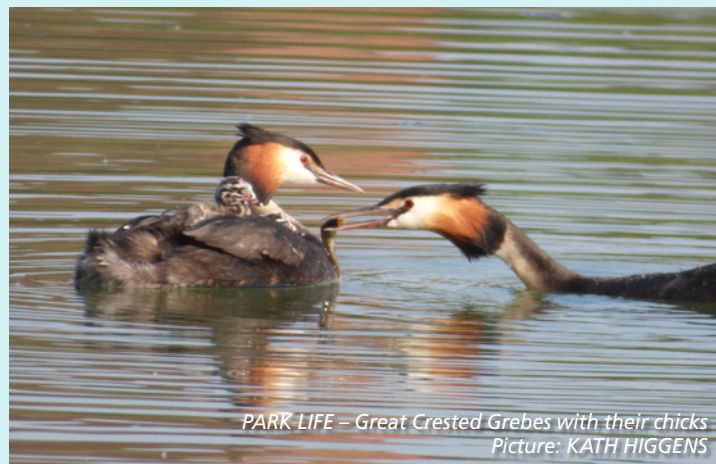
As I mentioned earlier we have plenty of nesting birds on and around the lake and, as I write this, our Great Crested Grebes are busy feeding their chicks.

If you have visited the lake recently you will have noticed some green fencing close to the water near Goldwater Lodge, behind which our swans are sitting on their clutch of eggs. If all goes well, soon we should be blessed with some little blue-grey fluff balls following mum and dad.

In the meantime while we wait, do enjoy all new life but please do so at a safe distance so as not to disturb.

On Tuesday June 18 from 2pm to 3.30pm I will be leading a one-mile walk and providing information about the history of the lake and the surrounding area and talking about the nature and wildlife. Tea and coffee will be provided halfway through the walk which is free to attend. Meet by St Andrew's Church, Goldsworth Park Centre. Free parking is available for up to three hours at the centre.

www.goldsworthparkanglingclub.com



PARK LIFE – Great Crested Grebes with their chicks
Picture: KATH HIGGENS

Book your holiday at home

GOLDSWORTH PARK'S St Andrew's Church is offering two days of "Holidays at Home" for over-55s during August.

Now in its eleventh year, the theme of the popular two-day event this year is "Beside the Seaside." Sue Slater of the organising committee said: "We are planning a full programme of seaside-themed crafts and activities, as well as quizzes and competitions, gentle exercises and even sea-shanty singing."

The dates are Tuesday August 13 and Thursday August 15, with different activities each day from 10am to 4pm. Lunch and refreshments are included.

New craft sessions

ANDY'S COMMUNITY CAFÉ at the Goldsworth Park Centre is now hosting "Craft @ Andy's" on Thursday mornings. Described as "Conversation, creativity and coffee," everyone is welcome to drop in between 9.30am and 11.30am, possibly to learn a new skill and to meet people.

Organiser Margaret Kaye said: "The sessions are free to attend. You can bring something with you to work on, or just turn up as we have materials and ideas to inspire you."

You'll find Andy's inside St Andrew's Church, next to the shops at Goldsworth Park Centre.

Sue added: "For the first time, we do not specify a cost. Guests can pay on the day whatever they feel able to. Numbers are limited, therefore bookings must be made in advance and we cannot accept guests dropping in on the day."

For a booking form or more details contact St Andrew's Church office on 01483 723879.



LE DRAIG
ELECTRICAL/PROPERTY
SERVICES LTD

Checkatrade
Where reputation matters

Electrical contractors & property maintenance services:

- inspection & testing • fault finding
- consumer unit changed • lighting & power

07799 098 200 / 01483 730 305



www.ledraigelectrical.co.uk



Fun Day is a big hit

WOKING and Sam Beare Hospices Dragon Boat Racing and Family Fun Day drew record crowds to Goldsworth Park lake on Sunday May 19.

Twenty-three teams entered the fund-raising event and after a day's strenuous racing Team Natta were declared winners.

As well as the racing there were a variety of food, craft and plant stalls to enjoy. A particular favourite among the children was the petting farm with pigs, goats, ponies, geese and hens.

Volunteers from the GPCA manned the tea and cake shop in the community hall and raised £860.

The event is proving so popular that 10 teams have already signed up for next year's Fun Day!



TEA TIME – GPCA volunteers (from left) Hilary Harris, Matthew Butt and Chair Irene Watson



RACE DAY – big crowds gathered on the lake banks



ANIMAL MAGIC – Inez, Poppy and Joseph make some new friends

Hospice's survey shock

WOKING HOSPICE'S ability to deliver free care is at risk unless more of the public are made aware that it is a charity relying on fundraising activities and revenue from its 18 shops to operate.

The hospice, on Denton Way, recently completed research that highlighted a significant gap between local residents' awareness about the charity and the hospice's value to the community.

Of the 627 local residents who took part in the survey from across the hospice's referral region, Spelthorne, Runnymede, Surrey Heath, West Elmbridge, Woking and North Guildford, half did not know that Woking & Sam Beare Hospices was a charity and over a third said they had no idea how the hospice was funded.

A hospice spokesperson said: "Our research highlights the urgent need for us to communicate to our region that we are a charity and we cannot continue to deliver our vital care free of charge to thousands of Surrey families each year without the support of everyone in our community.

"We launched our 2019 Appeal in Dying Matter's Week in May with a clear and simple message — it is possible to make a difference to someone in your community, who could be your mother, brother, sister or friend by supporting the hospice."

THE annual midnight memory walk is one of the hospice's biggest fundraising events and this year it has chosen an eighties disco theme.

Check-in for the event begins at 8pm and the eight-mile walk begins at 10pm on Friday June 21 at Woking Leisure Centre. Registration in advance is £18 or £22 on the night.

There will be prizes for the best dressed team and individuals.

To find out more about Woking & Sam Beare Hospices and its 2019 Appeal and the walk visit www.wsbhospices.co.uk

Beacon House Dry Cleaners & Launderer

Specialists in Evening Wedding Wear, Silk, Shirts, Duvets, Blankets, & Table Cloths

All types of Laundry Services, Repairs & Alterations
Invisible Mending Services, Key Cutting & Shoe Repairs

25% Discount for OAP's & Member of all Forces
(Wednesday & Thursday. T&C's apply)

www.beaconhousedrycleaners.co.uk/Facebook



Tel: 01483 77 21 24

7 Goldsworth Park Shopping Centre, Woking GU21 3LG

Call for Free Collection & Delivery
(Opp Waitrose)

New map's streets ahead!



FINDING A WAY – Royer with the updated map

A POPULAR fold-out footpath and road map of Goldsworth Park has been reprinted in aid of Woking Hospice.

The map will keep you on the right track wherever you walk or drive in the Park. It was the brainchild of Goldsworth News writer, Royer Slater, who researched the original map in 2013 and produced the artwork on his computer over many months.

Royer said: "The Park is covered with paths and alleys linking roads. Distances between streets are often much shorter when you're not confined to roads."

Several traders at Goldsworth Park Centre have copies of the map on their counters together with a hospice collection box. Royer said: "The cover price is £1 but I hope people will put a little more into the box, as the hospice is an excellent cause."

Royer researched and published the original version five years ago after moving into Goldsworth Park, although he knew

the estate well having lived in the area since 1983.

He added: "Originally the map was just for my own interest and benefit, but several people asked for a copy. So I had a quantity printed with adverts for local businesses which more than paid for the printing. All the profits and proceeds from sales of the map are donated to Woking Hospice."

"I can't be sure how much the maps have raised for the charity so far because some collection boxes were passed directly to the hospice. And map sales in the hospice shop were put through the till just as donations. But it must be well over £1000."

"I hope readers will buy a map and that it encourages people to walk, not drive — and that they'll have fun exploring the pathways of Goldsworth Park, just as I did!"

In the reprint Royer has included a few paths missed from the original version which had been pointed out by other residents.

Scout group's 40th anniversary

THE 1st Goldsworth Park Scout Group, who celebrate their 40th anniversary this year, held their annual litter pick on Saturday May 18.

There was a good turnout from Scouts, Guides, Cubs, Rainbows and Brownies.

They set up their information board outside Waitrose in the shopping centre and held a collection.

The group has designed a new badge to mark their anniversary (*pictured right*).



READY TO CLEAN UP – 1st Goldsworth Park Cubs, Rainbows and Brownies

VALHALLA Netball Club, which plays matches at Winston Churchill School and trains at Sythwood School, is looking to expand and would welcome new members.

Previous netball experience is not essential, but being able to commit to Tuesday evenings is important.

For more information on this friendly club please contact valhallanetballclub@gmail.com



Fully qualified hairstylist with 20 years experience, comes to you, so you can relax in the comfort of your own home.

Please feel free to contact Monica on 07851 727665

for your free initial consultation.

Hair by Monica

07851 727665

Liz's top citizen award

LIZ POCKNELL, District Commissioner of Woking Scouts, has been presented with Woking's Eminent Citizen Award for 2019 for her outstanding contribution to Guiding and Scouting across the Borough, writes MICHAEL FARLAM.

Woking's outgoing Mayor Cllr Will Forster presented Liz with the award at his Civic Reception at the HG Wells Centre.

Liz, who has been District Commissioner for eight years and a former Goldsworth Park Guides leader, said she was most proud of bringing together 350 leaders and 1200 young people and added: "I lead a team of high quality individuals who made me look so good."

Other outstanding members of the community joined Liz at the reception for their awards. The Mayor said: "It was an honour to present awards to these exemplary members of our community, who have consistently gone above and beyond what is expected of them in their school, work or private lives, to help others overcome adversity. They are a true inspiration to us all."

"There are many individuals and voluntary groups in Woking that do fantastic work and make significant contributions to the lives of others. I would like to take the time to recognise everyone who I have met in my Mayoral year and thank them for their hard work and continued dedication to serving others in our Borough."



LIZ POCKNELL



Letters

Email your views to editor@ourgoldsworthpark.org.uk

THE GPCA made a contribution from its funds to St Andrew's Church which used the gift to buy a microwave oven for Andy's Community Café. Revd Kate Wyles, vicar at the church, sent this letter of thanks to Chair Irene Watson.

Dear Irene,

I am writing to thank you very much for the donation from Goldsworth Park Community Association to enable Andy's Café to source a commercial microwave.

We are delighted that the Café is proving very successful with its new décor and pay-as-you-feel approach which we hope provides an accessible welcome to all in the Goldsworth Park community and beyond. The microwave will help us provide an efficient service alongside the caring provision.

Many thanks once again,

Yours sincerely,
Revd Kate Wyles.



SDS Gardening Services

E-mail: sdsgardeningservices@gmail.com



Before



After

Lawn recovery and maintenance

Tree work

Landscaping

Patio/Decking cleaning

Regular Garden Maintenance

Complete Garden Overhaul

Mobile: 07943 983518



@SDSgardeningservices



GOLDSWORTH PARK resident and former Woking Councillor Ian Eastwood was presented with a certificate and decanter and glass set in recognition of his outstanding service, at the Council meeting on May 16.

Ian, 74, did not stand for re-election on May 2 after 28 years as a councillor for Goldsworth West and Goldsworth Park. He was Mayor of the Borough in 2000.

WHAT'S ON

GOLDSWORTH Badminton Club meets every Saturday between 1pm to 3pm at Woking High School, Horsell. Contact Ian on 01483 767748.

WOKING Ladies Choir are performing a selection of songs made famous by the movies at Knaphill Methodist Church, The Broadway, on Saturday July 13 at 7.30pm. Tickets £12, under 16s £6 and include refreshments. Call 07957 593534.

SUMMER of Craft-aeology. Join Surrey County Archaeological Unit for a summer of archaeology inspired craft workshops. Venue is the Surrey History Centre in Goldsworth Road and must be booked in advance. Details at www.surreycc.gov.uk/heritageevents

WOKING Choral Society are holding their summer concert on Saturday June 22 at 7pm at All Saints Church, Woodham featuring Vivaldi's Gloria and Bach's Cello Suite in G Major. Tickets including refreshments £15, students and children £5. Details at www.wokingchoral.org.uk

Woking's new Mayor

COUNCILLOR BERYL HUNWICKS has been elected the 46th Mayor of Woking.

London-born Beryl moved to Woking with her family in the early 1970s and she has lived for most of that time in Horsell.

Beryl became involved in local politics in 2007 after being nominated by a friend to stand for ward councillor. Beryl embraced the role serving many portfolios on the Council's Executive Committee including environment and sustainability, health and wellbeing, waste and recycling and community safety.

During her 12 years as a councillor, Beryl has also served on numerous working groups including Climate Change, Cycle Woking, Woking Joint Committee, Police and Crime Panel and Surrey Waste Partnership.

Beryl has chosen to support charities Your Sanctuary and Women's Support Centre during her Mayoral year.

The Deputy Mayor this year is Cllr Saj Hussain, a Conservative councillor for Knaphill.

Surrey CC HQ

WOKING and Guildford have emerged as the frontrunners for Surrey's new HQ as councillors unveiled plans to cut the number of buildings it uses from 300 to 100 in an efficiency drive that aims to save tens of millions of pounds.

The potential locations for Surrey's new 'civic heart' by the end of 2020 are revealed in a report about moving staff closer to residents



WOKING MAYOR,
BERYL HUNWICKS

with plans to save up to £10million a year in property running costs within three to five years and potentially developing buildings to create new homes and jobs.

Council leader Tim Oliver said: "Our aim is to move out of Kingston by the end of 2020 and back among the communities we serve using existing offices and a new small civic building."

Organised begging warning

WOKING residents and visitors are reminded not to give cash to street beggars amid concerns of organised begging in the town centre.

The warning comes following information that suggests criminal gangs could be operating in the Borough and across Surrey.

Instead, the public are encouraged to donate directly to the York Road Project, Woking's emergency night shelter available for adults who find themselves homeless. The project also provides specialist support to individuals on matters such as housing, addiction, health and wellbeing.

Woking's first living wall

A 75 METRE living wall has been installed to complement the transformation of Albion Square with a natural feature that runs the length of the train station's exterior wall. It serves as a leafy frame for the town's iconic mural that depicts life along High Street in Edwardian times.

The ivy screens that make up the wall are a mix of species for interest and colour and, as well as attracting insects and wildlife, the wall will help to improve air quality by capturing pollutants.

MICHAEL FARLAM

Quality Care and Support at Home



- An award - winning family owned and run business who were fully compliant at our last inspection by the Care Quality Commission.
- A friendly, flexible service with help available from ½ hour per week to 24 hour live-in care.
- Trustworthy, caring, professional staff, fully trained and referenced with Criminal Records clearance.
- We can offer you support with: personal care, bathing, hair washing, physical therapy exercises, companionship, nursing care, simple cooking, shopping, medication management, ironing, light domestic duties and dog walking or care of pets.
- Trustworthy, compassionate and reliable individuals required to join our friendly team. Experience not essential as full training is provided.
- If you are over 18 with your own car and good English skills please give us a call to find out more about joining our lovely team of carers!



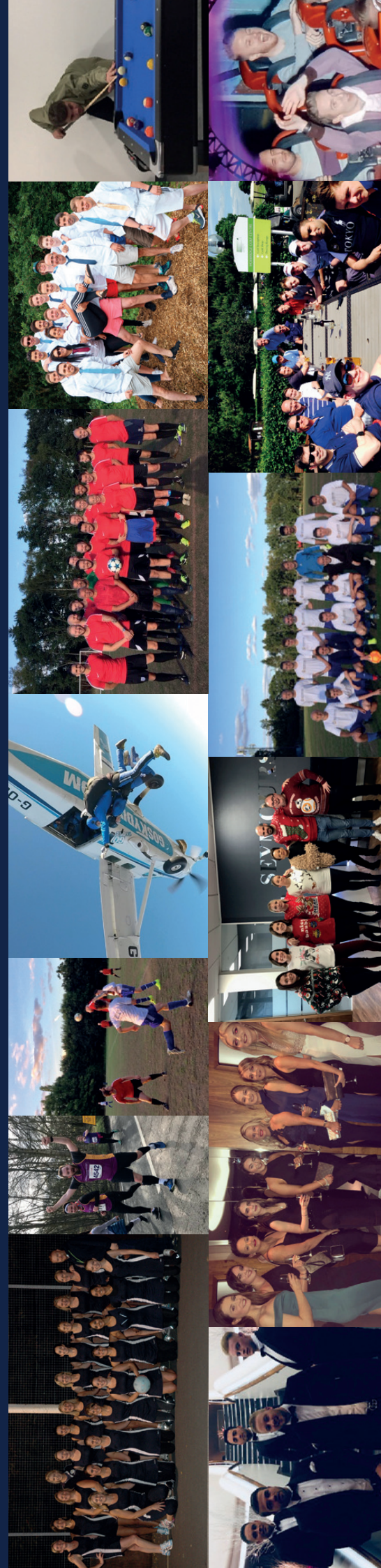
For further information, or to arrange a free no obligation meeting in your home, please call **01483 797950** or visit our website **www.astoragency.co.uk**



SEYMOURS
Independent Estate Agents

In 2018 our sales and lettings offices in Woking, Knaphill and Horsell proudly raised over **£20,000** for **WOKING & SAM BEARE HOSPICES**

LOCAL OFFICES | LOCAL PEOPLE | LOCAL VALUES



FOR A FREE VALUATION CALL US ON 01483 757700