

GOLDSWORTH NEWS

December 2023 – Issue 186

Inside:

- GPCA AGM report – p4
- Local Area Coordinator – p8
- Dates for your diary – p11

Winter edition



www.ourgoldsworthpark.org.uk



*Merry Christmas
to all our readers*



Goldsworth Swans Winter 2023. Photo: Pam Taylor.

SALE NOW ON

at your local
independent retailer



Ceramic Electric Hob

PKE611CA3E



- 4 zones
- Dial controls, power boost
- Quick start, residual heat indicator
- H4.6 x W59.2 x D52.2cm

Only
£249.00

2 Year Warranty



Gas Hob

PGP6B5B90



- 4 Cooking elements
- Ergonomic control knobs
- 2 x 1.75kw, 3kw, 1kw
- H4.5 x W58.2 x D52cm

Only
£299.00

2 Year Warranty

RSM

Domestic Appliances
FRIENDLY SERVICE • BIG SAVINGS • FAST DELIVERY

YOUR LOCAL SUPERSTORE

1-2 Albion Parade
High Street
Knaphill
Woking GU21 2PS

For advice, sales and repairs
call us on 01483 475000

Buy online at
rsmdomesticappliances.com

Price Match Guarantee | Super Service | Expert Knowledge Safe | Contact-Free Delivery

Terms & Conditions apply. Some products sold as an agent for Euronics Limited. All rights reserved. All offers are subject to availability while stocks last. Delivery & installation charges may apply. Exclusions & radius Apply. Prices correct at the time of print but can be subject to change. See in store for full details. Images for illustration purposes only. Copyright Euronics 2023. E&OE 2023. Savings compared to a higher price charged for seven days. Savings on selected models only.



Do you need an Angel in your life?

Exceptional home care visits from exceptional carers

Most people in need of care would prefer to stay in their own home. Our home care visiting service is carefully tailored to suit you or your loved ones needs. We can help people to retain their independence and stay connected to friends, relatives and pets, safe in their own home where they want to be.

Our caregivers are carefully selected. We find excellent people with the right mix of skills, experience and a true caring nature, so that they can provide consistently superior home care.

We can help with activities ranging from shopping and companionship, to personal care, hospital discharge support and end of life care.

We can visit from one hour each week to every day, for as long as you need us to help with:

- Companion & Social Care
- Personal Care
- Dementia & Alzheimer's Care
- Post-Hospital Stay Care
- Palliative
- End of Life Care
- Live-in Care
- Overnight Care



Find out more about how a Visiting Angel can help

Call 01483 931 934

www.visiting-angels.co.uk/centralsurrey/
CentralSurrey@visiting-angels.co.uk
 Guildford, Woking, and Surrey Heath Boroughs.

VisitingAngels
 QUALITY AT HOME CARE

We love to watch
 you grow too!



Join our Nursery team



With opportunities to train, gain further qualifications, and develop your career, Toad Hall Woking is a great place to work!

Toad Hall
 Children's Nursery

For more info email:
recruitment@toadhall-nursery.co.uk

Fox & Flowerpot

Your Local Community Pub

Family Friendly Pub

Disco

Live Music

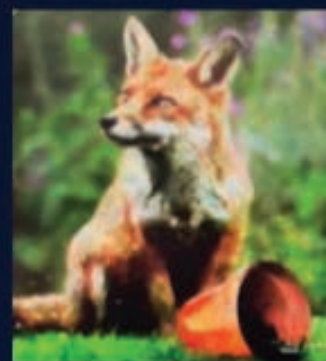
Karaoke

Good Food

BT & Sky Sports

Dog Friendly

*BBQ & Bouncy Castle
 in the Summer*



Regular Events:

*For more information
 follow us on Facebook*

*Goldsworth Park Centre
 GU21 3LG*

01483730739

foxandflowerpot@outlook.com



Made with PosterMyWall.com

GOLDSWORTH NEWS

GOLDSWORTH NEWS is the magazine of the Goldsworth Park Community Association CIO and is distributed free to approximately 5,000 homes and organisations throughout Goldsworth Park and the surrounding area.

EDITORIAL TEAM:

**Chris Taylor (Editor)
and Royer Slater.**

editor@ourgoldsworthpark.org.uk

Published by the

Goldsworth Park Community Association CIO

Designed and printed by Knaphill Print

ADVERTISE IN GOLDSWORTH NEWS

Contact:

gnadverts@ourgoldsworthpark.org.uk

DISTRIBUTION

Peter Hill

Tel: 01483 835183

Email: peter.hill3@ntlworld.com

Please submit articles for the next edition

by Monday 12th February 2024 to:

editor@ourgoldsworthpark.org.uk

GPCA CIO MEETINGS

Next public meeting April 2024 Date TBA.

Membership of the GPCA is required to receive details of forthcoming meetings.

Contact chair@ourgoldsworthpark.org.uk for information on how to join.

LOCAL COUNCILLORS

Ann-Marie Barker WBC,

Martin Sullivan (Lib Dem),

Stephen Oades WBC and

Lance Spencer SCC (Lib Dem).

Saj Hussain SCC (Conservative).

DISCLAIMER

No responsibility for the quality of goods or services advertised in this magazine can be accepted by the publishers, designers or printers. Advertisements are included in good faith.

No part of this magazine may be reproduced in any form without the express prior permission of the publishers.

The publishers do not necessarily agree with the views expressed by contributors nor do they accept any responsibility for errors of interpretation in the subject matter of this magazine.

All reasonable care is taken to ensure accuracy in preparation of the magazine but neither the publisher nor printer can be held legally responsible for the return of unsolicited manuscripts, art work or projects. Whilst every care is taken, no responsibility can be accepted for the safety of material submitted.



Please read and recycle

Views from the Chair

SOCIAL events organised by the GPCA have been few and far between in recent years, and apart from two online quiz nights during the worst of the pandemic, there has been little else on our calendar.

The reasons for this include trustees resigning, a lack of volunteers and insurance concerns.

The trustees are now keen to remedy the lack of events, and to that end social secretary Dueyna organised a survey in the summer to get residents' views. A popular choice was a tea and cake get-together and Dueyna is working to get a date for this event in the early new year.

If the get-together meets with a good response from residents it will be the encouragement to look at organising more events. The date, when fixed, will be posted on the GPCA Facebook group page, our website, the community noticeboard at the shopping centre and by email to registered members.

The Charity Commission require the GPCA, as a Charitable Incorporated Organisation, to keep a register of members. If you sign up, and it's free, you will receive, by email, details of our meetings and activities. To join, email Bob Cowell with your home address at community@ourgoldsworthpark.org.uk

By the time you read this our Christmas tree at the shopping centre will have been erected, decorated and adorned with lights. My thanks go to the Goldsworth Park Angling Club, the church, shops and pub for their support in bringing some festive cheer to the centre.

I hope you all have a wonderful Christmas and a happy New Year.

George Binyon

chair@ourgoldsworthpark.org.uk

X@ourgpca



facebook.com/groups/goldsworthpark

Volunteer GPCA News deliverers sought

YOUR help is urgently needed to deliver, just 4 times a year, the Goldsworth Park News. If you live in or near one of the roads listed below please volunteer today to ensure GPNews, which is run totally by volunteers, continues to be received and enjoyed by your fellow residents.

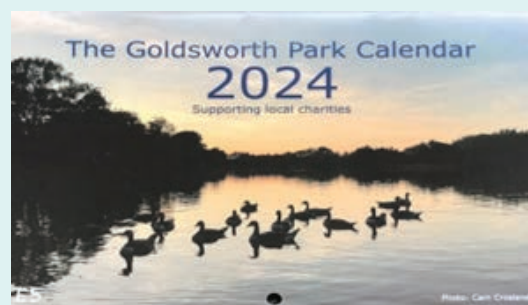
GPNews will be delivered to your door by our dedicated volunteer coordinator Peter and will only take a few minutes of your time to deliver. I am sure you will find supporting your local community enjoyable – you could even meet a fellow resident you have not spoken to before.

The following roads require volunteer deliverers: Bankside, Caradon, Dene Place, Selby, Wyndham Road, Nethercote, Blencarn, Littlemead, Venton Close, Bardon Walk, Lidstone Close, Watercress Way, Quintrell Close, Foxhills, Hedgerley Court and Merrivale Gardens.

Please get in touch with Peter Hill at peter.hill3@ntlworld.com to offer your services.

The GPCA Calendar 2024

THE GPCA 2024 calendar is now available at only £5 from Beacon House Dry Cleaners in the Goldsworth Park shopping centre. All profit is used to support local charities.



THE GPCA Chair, George Binyon, opened the 2023 AGM by welcoming guest speaker Binnie Crookes-Martin, Surrey County Council's newly appointed local area coordinator (LAC) for Goldsworth Park.

Binnie told the meeting that she was one of a number of LAC's appointed in the county and that their role was to help people live their best lives, and to recognise their own strengths and capabilities before seeking help from more formal support and services.

After her talk, which was well received by the meeting, Binnie answered questions from the floor.

The Chair thanked Binnie for her participation and wished her every success in her new role, adding that the GPCA's Goldsworth News magazine and Facebook Group could assist her in building a relationship with the community.

George then began the formal business of the evening, presenting the Trustees' annual report of the Association's activities over the year.

These included:

- Laying a wreath the outdoor Remembrance Day service at the war memorial
- Erecting and decorating the Christmas tree in the shopping centre with St Andrew's Church and Goldsworth Park Angling Club
- Chair's sit-down meeting with Woking Council leader Cllr Ann-Marie Barker as part of her programme to meet community associations in the borough
- A work party to help clear invasive cherry laurel from the woods by the lake
- Running a refreshment stall in The Lodge with volunteers for the Woking and Sam Beare Hospice Dragon Boat race day
- Sponsoring the children's roundabout rides at the Guides and church summer fair to the tune of £600.00
- Organising a residents survey to get feedback on what social events would be preferable for the GPCA to organise
- Three community litter picks

The Chair added that there had been three editions of the

Goldsworth News and that advertising was holding up well. There were now over 1,600 members of the GPCA Facebook Group.

Treasurer Tina Hartley reported that the Association's main source of income over the year was from advertising revenue for the Goldsworth News but that the majority of this was spent on printing costs. The deficit for the year was £3,067.00. Tina added that £2,000.00 was still outstanding from Dianthus, owed as part of the lease transfer of The Lodge in 2017.

Bob Challoner, the former project manager of Natural Goldsworth Park, told the meeting that plans for tree planting close to the playground in conjunction with Woking Council, the Tree Council and Network Rail had been abandoned due to a lack of progress and that NGP would now be applying to the Woodland Trust for funding for the project.

Goldsworth Park Angling Club secretary and water bailiff Roger Westcott reported that the three cygnets on the lake were doing well and other wildfowl including grebes had had a successful breeding season. There had also been a re-stocking of fish.

New trustee Dueyna Chinere told the meeting the GPCA were keen to get back to organising social events and were planning a tea and cake get-together.

Charity Commission rules for a CIO charity like the GPCA require new trustees to be formally elected by members at the AGM. Under those rules Dueyna and Stephen Davies were duly elected. Commission rules also require a third of existing trustees to stand down each year. This year Tina Hartley and outgoing secretary Celia Young stood down and were re-elected.

After questions from the floor that included concerns about lighting and trees on the lake footpath, the Chair thanked Celia for her efforts as secretary, the trustees and volunteers for their support during the year.

Binnie Crookes-Martin can be contacted at bintou.crookesmartin@surreycc.gov.uk

Full minutes of meetings are posted on the GPCA website: www.ourgoldsworthpark.org.uk

Woking ShopMobility

WOKING ShopMobility is a registered Charity, supported by Woking Council and Victoria Place Shopping, which hires out mobility scooters, powerchairs and manual wheelchairs (including children's wheelchairs) to enable you to enjoy access to Woking Town Centre – its shopping centres, theatres, cinemas and restaurants. We also hire manual wheelchairs and travel scooters for holidays and day trips. These can be hired on a daily or weekly basis and must be booked in advance. The travel scooters can be dismantled into 5 parts and easily fit in the boot of your car. We are conveniently located on Level 1 of The Peacocks Shopping Centre and have our own 16 space free car park for the sole use of our clients. You do not need to be a Blue Badge holder to use us. Our service is available to anyone

needing support; including post-op care, pregnancy and those recovering from accidents or sports injuries.

A full list of our hire fees, including how to register, together with our opening times can be found on our website, www.wokingshopmobility.co.uk. We have a social media presence and can be found regularly posting and sharing updates on both Instagram #wokingshopmobility, and Facebook @wokingshopmob. Our friendly and caring staff look forward to welcoming you.

Contact details: Tel 01483 776612 Email wokingshopmobility@goolemail.com



HUGO'S HOME FOOT CARE



07903 299540

www.hugoshomefootcare.com

- Home visits
- Appointments available
- OAP discount
- Fully qualified & insured



20% Discount

Off Your Dry Cleaning Bill applied the third time you use our service in a month, as a little "Thank You" from us, T&C's apply - Offer valid until: End of Month

Beacon House Dry Cleaners
7 Goldsworth Park Shopping Centre, Woking, Surrey, GU21 3LG (Opp. Waitrose)
01483 77 21 24
bhfcsystem@yahoo.co.uk
info@beaconhousedrycleaners.co.uk www.beaconhousedrycleaners.co.uk



Lakeview Community Update

By James Sanderson Chair Lakeview Community Action Group

WE held our latest meeting in early November including representatives from Surrey County Council, Woking Council, St Andrew's Church and other local community groups. Discussed was a timetable of future events plus plans for the future of the Community Centre.

We took stock on the **Lakeview Community Fun Day** held in the summer this year and thought it went well, it was well attended and provided an opportunity for the local community to come together for the first time since the Covid pandemic. We have decided to hold a similar event next year, probably in August again. More details will follow in the New Year. We would like next year's event to be bigger and better with an emphasis on diversity and involving all the local community.

In the meantime, we would like to ask the Lakeview community what other events and activities they would like to take place at the Community Centre. Therefore we are planning a **"Have Your Say"** session in January or February, exact date to be confirmed. It will be very much an informal session and everyone is welcome.

I am also pleased to report that our mental health support group **Lift Up Together**, held on Thursday afternoons from 12pm to 3.30pm, is doing very well with an average attendance of 25 to 30 each week. It continues to provide vital support to its regular attendees and the

cooked lunch is particularly appreciated. We are looking to see if additional support is needed for young adults.

We are still planning to relaunch our youth club for primary school children, **Little Minions**, but we require more trained volunteers in order to make it viable. It used to run on Friday afternoon and early evenings providing various activities trying to expand the children's imagination and creativity, as well as refreshments. If you are able to help then please get in touch, at admin@lakeviewcentrewoking.org.uk

There is already a youth drop-in for older children (aimed at 11-19 year olds) run by **Woking Youth** on Wednesday evenings 6.30pm to 8.30pm at the Lakeview Centre and this group continues to do well. If you would like to find out more, please contact Adam Davey at admin@wokingyouth.org.uk.

Also, as a reminder, the Lakeview Centre also hosts the **Bangladesh Cultural Association**, which holds daily prayers and conducts various other community activities including fitness classes, language lessons and children's groups. Contact the BCA Secretary, Naz Hussain, at mynaz@hotmail.com or 07547 291488 for more details.

Finally, you are interested in hiring the hall at the Centre, please contact Woking Council directly at centres.enquiries@woking.gov.uk



Goldsworth Care Helps People

By Sue Waters Goldsworth Care Volunteer

GoldsworthCare needs YOU – we need more Drivers and Duty Officers so that we can ensure those in the Goldsworth Park area, who need help, can make their important appointments.

Do you have a car and enjoy driving?

Do you have a few hours a week to help others in Goldsworth Park to get around?

We take our clients to doctors surgeries and dentists, hospital, hairdressers and shopping. Most of our work is during the week but some appointments are at the weekend. We reimburse drivers towards motoring costs and our clients are invited to give a donation towards costs.

Goldsworth care needs more drivers to meet the increasing

demands especially with the potential of the current financial crisis in Woking Council. You will need a DBS check to become a driver.

If you would like to volunteer and do not drive, do get in touch as we also need more duty officers who answer our phone line and allocate drivers to our client's needs.

Do ring our Careline 07751 801587 or email us goldsworthcare@gmail.com to find further details about volunteering as a driver or a duty officer.

Volunteers meet every monthly at Andy's Cafe for a coffee and a chat. There is always someone to ask about issues such as parking problems at hospitals or the best routes avoiding roadworks.

If you need help, please ring our Careline 07751 801587 to register with us.



LE DRAIG
ELECTRICAL/PROPERTY
SERVICES LTD 
Where reputation matters

Electrical contractors & property maintenance services:

- inspection & testing • fault finding
- consumer unit changed • lighting & power

07799 098 200 / 01483 730 305



www.ledraigelectrical.co.uk



FEMALE PERSONAL CARE ASSISTANT

Required to help an independent disabled woman living in Woking, with all aspects of life including personal care, housekeeping, social activities & driving her vehicle.

8.30am – 2.30pm MONDAYS TO FRIDAYS

or/and

6 – 9pm WEEKDAY EVENINGS

or/and

10pm – 7am SLEEPOVERS

Flexible working arrangements.

Requirements: legal right to work in the UK, full driving license, English speaker.

Benefits: 4 weeks paid holiday, double time on bank holidays.

For more details please call or text: 07881 824122

From the Lakeside



■ Roger Westcott is Goldsworth Park Angling Club secretary and fishing bailiff working in partnership with Woking Council to oversee fishing, monitor fish stocks and other wildlife, and keep the area clean and tidy.

ON the 18th October I attended the GPCA AGM at The Lodge. It was well attended and satisfying to hear that the association continues to be an integral part of the Community, acting on behalf of the residents of Goldsworth Park. It was at this meeting I was asked to say a few words on what we the Angling Club have been doing on the lake and the ponds at Brookwood country park this year so far.

Some of which you already know I'm sure through previous issues of Goldsworth News. Since the last magazine on the 11th October we undertook some restocking on the lake and the ponds. This is not necessarily to raise the numbers of fish, but to balance numbers and species present. One species in particular is the Tench which was once prolific in the lake but over the years has declined significantly to the point where only a low number of very large old fish remain. Most of whom are appear to be female, thus natural breeding recruitment will be limited. By introducing new stock and blood strain it is hoped this beautiful bottom dwelling fish will once again re-establish itself on both the lake and ponds.

When introducing new fish of any kind into our waterways there are very strict rules and regulations that must be followed in order to avoid the transfer of parasites and diseases. The fish we have introduced were especially bred in a controlled environment at Priory Fishery in Devon where the fish are health checked and come with a certificate of such before introduction to our waters. 200 have been introduced to the lake and 100 for the ponds averaging between 1lb and 2lb each or around seven-year-old. These fish do not come cheap in fact just shy of £8,000 - however money well spent when taking into account the health and future balance of our waters.

But it doesn't just stop there - we now need to look into ways of protecting that investment by giving nature a helping hand by making improvements to habitat. On the lake you will remember we sank two old boats planted with lily - apart from just looking pretty the main purpose is to create a safe haven for fish and insect life to inhabit and hide from predators such as the Cormorant which sadly are becoming a huge concern to fisheries nationwide. They can literally wipe out fish stocks in a matter of weeks. Some measures of licenced culling exist on some waters but not waters in public areas such as our lake and ponds, so we need to look at more natural ways to detour them from devouring everything that swims. This leaves us with little option other than creating obstacles, safe areas within the water.

Fallen branches into the water are now left and some of the trees have been encouraged to overhang and dip down into the margins which in turn gives fish and other water inhabitants hiding places when under attack. Brookwood however offers less opportunity for this approach so have we just purchased 4 small floating islands, 2 for each of the ponds, measuring 2 metres square each with large gabion baskets beneath. The mesh of the baskets is large enough for small to medium size fish to enter but not big enough for cormorants to follow. The fish can then hide safely under the island until danger has passed. The tops of the islands will be covered with coir matting and planted with reed and iris which not only pleasing to the eye but harnesses habitat and bio- diversity to the ponds.

These are just the hi-lights of things we have been up to over the last month or so. There will be more I've no doubt but with winter knocking at the door it is a time to reflect and to plan for next year. There is one exception however which is a few of us from the Angling Club each year help the GPAC to erect and dress the Christmas tree outside Waitrose. This is always a bit of fun along with lots of positive comments from passersby. If all goes well and I'm sure it will, the tree, all twelve feet of it will have arrived and been erected by the time you receive Goldsworth News. Oh and before you ask "NO" I'm most defiantly not going to be the shining star on the top, "brrrr to cold" up there.

I hope you find this of interest whether you are into fishing or not, which leaves me just to say "I Wish you all a very merry Christmas and a happy New Year".

ROGER





Please be a responsible dog owner

Respect other lake users and wildlife at all times



Keep dogs on lead



Bag and bin it



No swimming

Thank you

JOIN US FOR A

CHRISTMAS

MARKET

9TH DECEMBER

FROM 11AM TILL 3PM

GOLDSWORTH PARK

CENTRE

DECORATIONS /

GIFTS

FREE

ENTRY!

ENTERTAINMENT /

FOOD



Girlguiding

Goldsworth Park

St. Andrews Church

The market will be held in the Generation Centre, A2 and Andy's Community Cafe if wet.

News from St Andrew's by Revd Scott Smith

Greetings Goldsworth Park!

WELL, quite impossibly, as I write, Christmas is just six-weeks away.

In Luke's gospel account though, we hear the angels say, *'Do not be afraid. I bring you good news that will cause great joy for all the people. Today in the town of David a Saviour has been born to you; he is the Messiah, the Lord.'*

Do not be afraid.

It's in God gifting us Jesus that we find the assurance that whatever we're facing, we are not alone.

'Does anyone understand what I'm going through? Is anyone in this with me?' we might ask. Christmas says a gentle and irrepressible *'Yes! Jesus is.'*

At the heart of Christmas is the truth that whatever we face, whatever comes to pass, we are not left alone – that we never have to face the hardest things in life alone. God is present to His world. God comes to us. God comes to this earth, to this people, and he comes as one who is with us and for us.

As the evenings draw in and the nights become colder, we can sometimes find ourselves thinking that wintertime is bleak. However, Christmas is one of the great festivals of hope, and is often my favourite season of the year. Because, at the very heart of Christmas is the message that God Himself (in Jesus) was born to an ordinary family and became 'one of us'. Christmas celebrates the fact that we are not alone – that God loves us, chooses to do life with us, and is for us.

That is a great message full of hope.

At the heart of the Christmas story is the truth that God gives us the very thing we actually need – Himself. And so, despite the hurriedness, I hope you're able to find a little space this year to contemplate God's gift in Jesus, because the difference between 'God is nowhere' and 'God is now_here' is just a little space.

Whatever this Christmas holds for you, my prayer is that you might know that you are not alone, and that God loves you, is with you and is for you.

At St Andrew's this year, we'll be celebrating this great message of hope, and you are very welcome to join in. Our Christmas services and events are listed below, and if you do stop by, do come and say Hello – I would love to meet you!

Our Christmas Services & Events:

Saturday 9th December

11am-3pm – Christmas Market

Join us at our community-centred Christmas market, hosted by your local church and Girl-guiding groups. Shop for lovely handcrafted gifts and enjoy delicious drinks and treats, all whilst supporting local charity groups.

Saturday 9th December

3pm – Community Carol Service

Begin your Christmas celebrations by joining us for a short outdoor service of Carols and Readings, as we gather outside Andy's Community cafe (opposite Waitrose).

Sunday 10th December

3pm – Christmas Messy Church

Come and join us for fun, crafts, games, songs and food at our Christmas Messy Church.

(Aimed at families with children aged 4-10 (primary school age), but older/younger siblings are welcome)

Sunday 17th December

6:30pm – Carols by Candlelight

A service of Carols and Readings

Saturday 24th December

4pm – Crib & Christingle Service

A fun-filled service for all the family (from pre-schoolers to grandparents!). With songs, a nativity and Christingles.

Saturday 24th December

11:15pm – 'Midnight' Communion

Join us for a service of Carols and Communion as we welcome in Christmas together.

Sunday 25th December

10am – Christmas Day Celebration

A fun-filled service for all the family as we celebrate the birth of Jesus – Happy Christmas!

Outside of Christmas, there's always lots going on through the week at St Andrew's, including Parent & Toddler groups, a monthly Hearing-Aid clinic, a weekly Craft group and an Art group. Do see our website <https://www.standrewsgwp.org> for more details, or pop in and see us.



Warm Hub at Andy's Community Café seeks volunteers

THE Warm Hub team at Andy's Community Café is seeking more volunteers so it can open at additional times.

The Warm Hub at Andy's was opened last year as part of Surrey County Council's Warm Hub campaign. "We have continued to remain open on Tuesday mornings, but would consider opening at additional times, if we had more support," said Patrick Coad, Youth and Community Worker at St Andrew's Church.

"We'd love to hear from you if you could help foster a warm atmosphere in our community hub. You would engage with visitors and make them feel welcome, and contribute to our cosy and inclusive environment."

Please email community@standrewsgwp.org for more details if you are interested in volunteering.

Friday evening youth meetings

St Andrew's Church is looking to increase the frequency of its Friday evening youth evenings for young people aged 11-16, and to enhance the activities they offer. Currently the meetings are fortnightly during term times, with games and activities, plus a trip out each term.

"We're eager to expand enhance our offerings but first we need volunteers to join our team of leaders," said Patrick Coad, Youth and Community Worker at St Andrew's. "Sadly over the last few years we have lost a number of volunteers, so don't run every week."

Could you help? Patrick will be pleased to chat to anyone who might help in this work, which has the potential to benefit many young people from Goldsworth Park. You can call Patrick via the church office: 01483 723879.

For more information and dates of upcoming youth evenings email youth@standrewsgwp.org.

Local Area Co-ordinator for Goldsworth Park

By the Editor Goldsworth News prepared from material provided by Binnie

YOU will have seen from the GPCA AGM report on Page 4 that guest speaker Binnie Crookes-Martin spoke about her new role as Surrey County Council's newly appointed Local Area Coordinator (LAC) for Goldsworth Park. Binnie explained that the role of a LAC is to work with individuals and families to understand what a good life looks like and how they could get there.

Binnie's Local Area Co-ordinator leaflets and flyers will be circulated across Goldsworth Park venues in coming weeks, and further information on Local Area Co-ordination will feature in future editions of Goldsworth News. Before you see one of these publications here is a brief summary of the information Binnie shared at the AGM.

Background: LACs work in areas with a population size of approx. 10,000 people, are based in the community making them easily accessible to people with the aim of helping people build their vision of a good life. They support people, families and local community groups.

People can introduce themselves by contacting Binnie via the contacts at the end of this article or friends, family or anyone can with their consent contact Binnie on their behalf. There is no assessment or eligibility criteria or threshold, or time limits to be alongside LACs. You can talk to your LAC about any changes you'd like to make in your life. Together you can explore options and solutions to any issues you might be facing that are concerning you in your life.

The LACs help you to share and strengthen personal gifts, talents, skills and contribution to the community. Plan goals and actions towards your vision of a good life. LACs support and walk alongside you and take things at your pace.

Your LAC is solely guided by what works for you.

The Local Area Coordination Vision is 'All people live in welcoming communities that provide friendship, mutual support, equity and opportunities for everyone'.

The Local Area Coordination Charter 'To develop partnerships with individuals and families/carers as they build and pursue their goals and dreams for a good life and with local communities to strengthen their capacity to welcome, include and support all people as valued, contributing citizens.'

Binnie informs that the 10 Principles Of Local Area Co-ordination are:

The principles are: **Citizenship** – All people in our communities have the same rights, responsibilities and opportunities to participate in and contribute to the life of the community, respecting and supporting their identity, beliefs, values and practices. **Relationships** – Families, friends and personal networks are the foundations of a rich and valued life in the community. **Natural Authority** – People and their families are experts in their own lives, have knowledge about themselves and

their communities and are best placed to make their own decisions. **Lifelong Learning** – All people have a life-long capacity for learning, development and contribution. **Information** –

Access to accurate, timely and relevant information supports informed decision-making, choice and control. **Choice and Control** – Individuals, often with support of their families and personal networks, are best placed to lead in making their own decisions and plan, choose and control supports, services and resources. **Community** –

Communities are further enriched by the inclusion and participation of all people and these communities are the most important way of building friendship, support and a meaningful life. Contribution We value and encourage the strengths, knowledge, skills and contribution that all individuals, families and communities bring. **Working Together** – Effective partnerships with individuals/families, communities and services are vital in strengthening the rights and opportunities for people and their families to achieve their vision for a good life, inclusion and contribution. **Complementary Nature** – Services should support and complement the role of individuals, families and communities in supporting people to achieve their aspirations for a good life.

Local Area Coordination works for all people and is open to all residents in Goldsworth Park. The aim is to build more welcoming, inclusive and mutually supportive communities.

Local Area Coordination works for all people and is open to all residents in Goldsworth Park.

The aim is to build more welcoming, inclusive and mutually supportive communities.

Binnie Crookes-Martin can be contacted by phone on 07816 091279 or by email at bintou.crookesmartin@surreycc.gov.uk



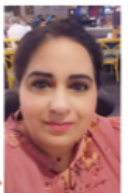
If you are struggling with a long term condition, if you have just been diagnosed OR if like me you suffer from many conditions then this will benefit you.

11 months ago I came across a system which has improved a lot of my symptoms, has helped me lose weight and given me amazing results. Its improved my quality of life and taken the edge off my chronic pain too. I am also in a wheelchair.



I suffer from Insulin Resistance, Type 2 Diabetes, Rheumatoid Arthritis, Fibromyalgia, Underactive Thyroid, Addisons Disease, Obesity, PCOS, Depression, Chronic Fatigue, Chronic Pain, Steroid Dependent and GastroParesis. If it can help me then imagine what it can do for you.

My 10 week Transformation



Conditions

Diabetes Pre-Diabetes Rheumatoid Menopause Fibromyalgia Thyroid Migraines Depression	Insulin Resistance Psoriasis Exceme Colitis IBS/PCOS Acid Reflux Plus many others
---	---

So WHAT is the Feel Great System

It's 2 plant based products plus intermittent fasting

HOW The System HELPED me

- ☒ Insulin down (200 to 30 units)
- ☒ Lost 21 lbs
- ☒ Lost 40 INCHES
- ☒ More energy
- ☒ Less Fatigue & Pain
- ☒ Less Pigmentation
- ☒ Down 5 dress sizes (7xl to 2xl)

90 Day Money Back Guarantee

So many people who were pre-diabetic or had type 2 diabetes were able to reverse their condition and STOP or REDUCE their medication (P.S. Only your GP can advise you on changes to your meds). Others reduced their Cholesterol & BP & came off their meds.

TEA

**MORE ENERGY
WEIGHT LOSS
INCH LOSS
NO DIET
NO HUNGER
NO CRAVINGS
NO BRAIN FOG**

07947713553 **Feelgreatwithlabs**

Motormech

Vehicle Service & Repairs to all leading makes

COMPLETE SERVICE
£179.00
(INC. VAT)

MOT TEST
£39.00
(INC. VAT)

FREE BRAKE & BATTERY CHECK

COMPLETE SERVICE & MOT
£199.00
(INC. VAT)

STANDARD SERVICE
£99.00
(INC. VAT)

BOOK ONLINE
www.motormechguildford.co.uk
OR CALL: 01483 502671

STANDARD SERVICE & MOT
£119.00
(INC. VAT)

Unit 1H, Cathedral Hill Industrial Estate, Guildford, Surrey GU2 7YB

Fundraising success for Woking based Electric Tripboat!

By The Editor based on notes provided by Charlotte Rodgers, Press Officer Basingstoke Canal Society

AFTER 2 years of fundraising within the local community and with much effort from many Basingstoke Canal Society volunteers, the Society is excited to announce that they have all the funds required to proceed with the ordering and production of the Basingstoke Canal Society's new electric trip boat.

The last £75,000 of investment required came from a successful Your Fund Surrey grant application. The Basingstoke Canal Society are all very appreciative that such a program exists to support community projects and initiatives.

In total over £165,000 has been raised, and in addition to Surrey County Council's Your Fund Surrey grant, the Society has achieved this through the generosity of Woking residents and, so a big thank you to everyone who has contributed.

The Basingstoke Canal Society wants to thank the many individual contributors who have made this possible in addition to the £75,000 from Your Fund Surrey. The Shanley Foundation and the Syder Foundation awarded grants for the project, and many locally based businesses also supported with corporate donations from Waitrose, Lansbury Estates, AECOM, The Ion Group, Tim and Liz Dodswell and SC Johnson. This is in addition to generous legacies from the estates of Joyce Keep and Peter Harman.

Many artists also donated paintings for auction as well as the Basingstoke Canal Authority who donated the remaining paintings of Nancy Larcombe.

The Basingstoke Canal Society Chairman, Ian Moore highlighted: "Huge thanks go to Gren Gale and the Fundraising Team, in particular, Diane Sanderson for leading our submission to Your Fund Surrey.

The grant will help the Society replace our aging diesel-powered trip boat Kitty based in Woking. By replacing a fossil

fuelled trip boat with an all-electric boat, it will reduce our annual carbon emissions by an estimated 3.5 tonnes in an urban environment, helping us meet the Climate Emergency goals set out by both Central Government and the County Council.

Our trip boat Kitty carries nearly 2,000 passengers a year, and raises many thousands of pounds that go straight back into helping to maintain our fantastic canal."

Brayzel Narrowboats will be building the new Kitty trip boat and the Society hopes to have the new boat in the water for Spring Summer 2024 boat trips.

At the same time as launching the new trip boat, the Society will install charging points to kick-start the electrification of the Basingstoke Canal. The work will include installing three charging points, one of which will be dedicated to Kitty and the other two open for public use. The Basingstoke Canal is a Site of Special Scientific Interest (SSSI) so it is particularly important to protect its environment with this new 'greener' trip boat and charging points for other boaters too. The new electric Kitty will also be designed to be better adapted for wheelchair use and have better facilities for all users.

To find out more about The Basingstoke Canal Society or to become a member, please visit www.basingstoke-canal.org.uk



SALE NOW ON

at your local independent retailer

Price Match Guarantee | Super Service
Expert Knowledge | Contact-Free Delivery

BOSCH
Invented for life.

12 Place Integrated Dishwasher

SMV2ITX18G



- Five progs. incl. Eco
- Cutlery basket
- Delay start
- H81.5 x W59.8 x D55cm

Only
£449.00 | 2 Year Warranty
E Energy Rating

BOSCH
Invented for life.

Built-in Single Oven

HHF113BR0B



- 66 L (net) multifunction fan oven
- 3D hotair cooking
- Integral grill
- H59.9 x W59.4 x D54.8cm

Only
£269.00 | 2 Year Warranty
A Energy Rating

RSM
Domestic Appliances
FRIENDLY SERVICE • BIG SAVINGS • FAST DELIVERY

YOUR LOCAL SUPERSTORE
1-2 Albion Parade, High Street,
Knaphill, Woking GU21 2PS
Call 01483 475000
Buy online at rsmdomesticappliances.com

Terms & Conditions apply. Some products sold as an agent for Euronics Limited. All rights reserved. All offers are subject to availability while stocks last. Delivery & installation charges may apply. Exclusions & radius apply. Prices correct at the time of print but can be subject to change. See in store for full details. Images for illustration purposes only. Copyright Euronics 2023. E&OE 2023. Savings compared to a higher price charged for seven days. Savings on selected models only.

YOGA / PILATES

All classes are weekly and one hour's duration throughout the year

Mondays 10:30 & 18:30 Pilates
11:30 & 19:30 Yoga

Tuesdays 11:30 Pilates

Thursdays 10:00 Pilates
11:00 & 19:00 Yoga

Horsell Village Hall, Woking GU21 4SS – free parking

Email: yogabyshen@gmail.com

Shen's Yoga and Pilates classes are held in a friendly relaxed environment for all abilities as alternatives are given. Regular practice will help you tone up, lengthen and strengthen your muscles. Improve your immune system to lead the life you deserve.

There is nothing like a live class where strangers become friends!

**PLEASE EMAIL ME FIRST – TURN UP EARLY
TO ANY CLASS**

Goldsworth Park Scout Group

By the Editor with input from Ben Inglis

IN the Autumn edition of Goldsworth News it was reported that in August of this year a group of over 500 Scouts from Surrey County went on an organised trip to Switzerland for 10 days! Eight Goldsworth Park Scouts plus Leaders attended. Goldsworth News promised to let you know how they got on. Here is a report from one of the Goldsworth Park Scouts, Ben Inglis, who joined in the fun.

"In August, I went on a 9-day expedition with Surrey Scouts to the Swiss Alps. We stayed in the international Scout camp in Kandersteg, right in front of a 200 foot rock face. We went rock climbing, outdoor swimming and did a high ropes course. My favorite activity was rafting. It was such fun jumping into the fast flowing river and being drifted by it. That was such a unique experience.

The weather was about 35 degrees almost every day but we also experienced a thunder storm which shook the mountains. The scenery was absolutely outstanding. We did a couple of different

hikes, one involved a cable car. The views you could get from every direction were mind-blowing.

Almost 700 Scouts and leaders were taken by 13 coaches. The coach journey there wasn't the best 18 hours but it was totally worth it. We took up almost half the campsite and Scouts from other countries took up the rest of the space. Cooking for that many Scouts wasn't the easiest but considering I am a fussy eater, the food was great. One morning we helped prepare dinner by chopping and peeling carrots for that many people. Thank you to the scouting community for giving me the opportunity of a life time."

If you want to give scouting a try please reach out to our Group Scout Leader, email Dave for an initial chat with no commitment needed, who knows where it will take you. gsl.gpark@gmx.com

If you have any Generation Centre Hall booking enquires please contact Sylvia on 01483 766001.



Trefoil

Trefoil is part of the Guiding family, and aims to support them and help others enjoy carrying the spirit of Guiding into our communities. Members are asked to agree to this when they join. You are eligible to join Trefoil if you are 18 or over and you agree to the aims of the Trefoil Guild. Perhaps you have been a member of either Guiding or Scouting in the past.

The local Trefoil Guild meets on the first Friday of each month at the Generation Centre, Denton Way from 7.30 pm to 9.30 pm. New members are warmly welcomed.

Contact Hilary Addison on hj.addison@virginmedia.com for further details.



The Encounter by Engage Woking Schools

Calling young people in school years 7 to 13

YOUNG people in school years 7 to 13 are invited to a special evening event next March, for food, fun, games, talk and worship. The Encounter event is being organised by Engage Woking Schools, a Christian charity based in St Andrew's Church, Goldsworth Park.

"Encounter will enable young people in school years 7 to 13 to connect with others, have fun, worship, pray and encounter God," explained Shelley Blunden, the charity's Director of Schools Work.

"Our time together will start with food and games, followed by some worship and a talk by the amazing Justin Brierley, who is an author, broadcaster and podcaster. He will explain many difficult questions we get asked in a really practical and understanding way in his talk, titled *What's the point? Why you? Why God?*"

"We are delighted that there is already great enthusiasm for the event amongst young people in churches around Woking as well as in the schools we visit.

Engage is running Encounter in partnership with churches around Woking, and is also promoting it in secondary schools and Woking College.

The event will take place on Saturday 2nd March 2024 from 7pm-9pm at the United Reformed Church in White Rose Lane, Woking.

For more details and to sign up visit <https://tinyurl.com/encounter-free> or contact the Engage office by calling 01483 901891 or emailing office@engagewoking.org



PENNY & HAYTER
OPTICIANS

- Independent Opticians
- Personalized service
- Warm & friendly approach
- Highest standards of eyecare
- Latest equipment
- A wide selection of frames, glasses lenses and contact lenses



To start your eye care journey,
call Penny & Hayter Opticians on
01483 475205, or visit:
www.pennyandhayter.co.uk

3 Albion Parade, High Street, Knaphill
Woking, Surrey, GU21 2PS
info@pennyandhayter.co.uk



Dates for your diary



Regular Events

SCOUTS AND GUIDES

■ Goldsworth Guiding meeting days and times:

Contact gpbrownies4@hotmail.co.uk

Rainbows – Monday, Tuesday and Friday 4.45pm to 5.45pm

Brownies – Monday Tuesday and Friday 6pm to 7.30pm

Guides Tuesday 7.45pm to 9.15pm

■ Goldsworth Scouts meeting day and times:

Contact gsl.gpark@gmx.com

Beavers – Wednesday 5pm to 6pm

Cubs – Thursday 5.45pm to 7.15pm

Scouts – Thursday 7.30pm to 9.00pm

■ **WARM WELCOME – Tuesdays.** Friendly chat and company on in Andy's Community Café from 9am to 12pm. Free entry and with free tea, coffee and biscuits.

■ **COFFEE AND CHAT – First and third Tuesdays of each month.** Conversation and company at Warm Welcome in Andy's at Goldsworth Park Centre from 10:30am-12 midday.

■ PARENT AND TODDLER GROUP – Mondays and Wednesdays.

With toys and ride-ons, crafts and singing. FREE (optional donation £2 per family). Run by St Andrew's Church during school term times in the A2 Youth & Community Centre (next to the Church). This is a free "drop-in", so entry may be restricted if max number is reached. Details: email toddlers@standrewsgwp.org

■ **BUMP & BEYOND – Fridays.** Relaxed group for parents-to-be and parents with babies not yet walking. Offers support and opportunities to make friends and share experiences. Fun for babies with toys and activities. FREE (optional donation £1 per family). Run by St Andrew's Church, normally in Andy's Community Café within the Church or in the A2 Youth & Community Centre when an event is taking place in the Church. Details: email bumpandbeyond@standrewsgwp.org

■ **SING GOLD – Wednesdays.** Goldsworth Park's Community Choir meets to have fun singing songs of all kinds in the Chapel at St Andrew's Church from 2pm to 3.30pm

■ **WOKING YOUTH – Wednesdays.** Drop in for young people aged 11-19 from 6.30pm to 8.30pm on Wednesday evenings in Lakeview Community Centre. See www.wokingyouth.org.uk for details. Volunteers needed to help at sessions: for info please email admin@wokingyouth.org.uk

■ **YOUTH EVENING – Alternate Fridays*.** For young people aged 11-16, with games and activities, and a termly trip out. From 7.30pm -9pm at St Andrew's Church during term time. For more information and dates contact youth@standrewsgwp.org

■ **LIFT UP TOGETHER – Thursdays.** Social self-support group aiming to destigmatise mental health issues in a safe environment. With lunch, newspapers and magazines and activities such as bingo, quizzes and games. 12pm to 3.30pm in Lakeview Community Centre.

■ **CRAFT CAFÉ – Thursdays*.** With a variety of craft activities in Andy's Community Café from 10am-11.30am. Materials provided. FREE. During school term times only.

■ **MUMS' BIBLE STUDY GROUP – Alternate Thursdays*.** Meets fortnightly in the Chapel at St Andrew's from 10am to 11.30am. For the dates contact Karin by email: children@standrewsgwp.org

■ **ART GROUP – Thursdays*.** Creativity, conversation and coffee. All abilities welcome. Meet and make friends, in Andy's Community Café from 1pm-3pm. Materials provided. FREE.

* Not during school holidays

December

■ **SATURDAY 3 DECEMBER Andy's 'Out of Hours' Christmas Special from 7.30pm** | Live music and entertainment in the comfort of Andy's Community Café, with licensed bar and food. Featured acts: Bisola, Shona Wildman with Graham Kirby-Smith, Mark Leuty and friends. Limited tickets available FREE (donations accepted) at: tinyurl.com/andysooh

■ **WEDNESDAY 6 DECEMBER Hearing aid clinic: drop in from 1pm-3pm** | NHS hearing aid general maintenance including cleaning retubing, general advice and free NHS batteries. St Andrew's Church, Goldsworth Park Centre. Free service run by NHS-trained volunteers from St Andrew's Church. For details visit www.standrewsgwp.org/hearing

■ **SATURDAY 9 DECEMBER Christmas Market 11am-3pm** | Goldsworth Park Christmas market. hosted by St Andrew's Church and Girl-guiding groups at Goldsworth Park Centre. Shop for lovely handcrafted gifts and enjoy delicious drinks and treats, while supporting local charity groups.

■ **SATURDAY 9 DECEMBER Community Carol Service 3pm** | Begin your Christmas celebrations by joining us for a short outdoor service of Carols and Readings, outside Andy's Community Café (opposite Waitrose).

■ **SUNDAY 10 DECEMBER Christmas Messy Church 3pm** | Join us for fun, crafts, games, songs and food at our Christmas Messy Church. Aimed at families with children aged 4-10 (primary school age), but older/younger siblings are welcome). St Andrew's Church, Goldsworth Park Centre.

■ **SUNDAY 17 DECEMBER Carols by Candlelight 6:30pm** | A service of Carols and Readings. St Andrew's Church, Goldsworth Park Centre.

■ **SATURDAY 24 DECEMBER Crib & Christingle Service 4pm** | A fun-filled service for all the family, from pre-schoolers to grandparents! With songs, a nativity and Christingles. St Andrew's Church, Goldsworth Park Centre.

■ **SATURDAY 24 DECEMBER 'Midnight' Communion 11:15pm** | A traditional service of Carols and Communion as we welcome in Christmas together. St Andrew's Church, Goldsworth Park Centre.

■ **SUNDAY 25 DECEMBER Christmas Day Celebration 10am** | A fun-filled service for all the family as we celebrate the birth of Jesus – Happy Christmas! St Andrew's Church, Goldsworth Park Centre.

January 2024

■ **FRIDAY 5 JANUARY Trefoil Guild** | Monthly meeting for current and past Guiders who enjoy meeting other like-minded folk. The Generation Centre, Denton Way.

■ **WEDNESDAY 10 JANUARY Hearing aid clinic: drop in from 1pm-3pm** | NHS hearing aid general maintenance including cleaning retubing, general advice and free NHS batteries. St Andrew's Church, Goldsworth Park Centre. Free service run by NHS-trained volunteers from St Andrew's Church. For details visit www.standrewsgwp.org/hearing

February

■ **FRIDAY 2 FEBRUARY Trefoil Guild** | Monthly meeting for current and past Guiders who enjoy meeting other like-minded folk. The Generation Centre, Denton Way.

■ **SATURDAY 3 FEBRUARY Andy's 'Out of Hours' from 7.30pm** | Live music and entertainment in the comfort of Andy's Community Café, with licensed bar and food. Tickets FREE (donations accepted) but book here: tinyurl.com/andysooh

■ **WEDNESDAY 7 FEBRUARY Hearing aid clinic: drop in from 1pm-3pm** | NHS hearing aid general maintenance including cleaning retubing, general advice and free NHS batteries. St Andrew's Church, Goldsworth Park Centre. Free service run by NHS-trained volunteers from St Andrew's Church. For details visit www.standrewsgwp.org/hearing

■ **SATURDAY 10 FEBRUARY Repair Cafe 10am to 12.30pm** | Woking Environment Action (WEAct) brings the Woking Repair Cafe to Andy's Community Café. A team of volunteers will offer free repairs for electrical, mechanical, furniture, toys, clothing and textiles. Only items that can be carried by one person will be accepted. No petrol-driven items for safety reasons. If possible, email beforehand with details of what you wish to bring: hello@wokingenvironmentaction.com

March

■ **FRIDAY 1 MARCH Trefoil Guild** | Monthly meeting for current and past Guiders who enjoy meeting other like-minded folk. The Generation Centre, Denton Way.

■ **WEDNESDAY 6 MARCH Hearing aid clinic: drop in from 1pm-3pm** | NHS hearing aid general maintenance including cleaning retubing, general advice and free NHS batteries. St Andrew's Church, Goldsworth Park Centre. Free service run by NHS-trained volunteers from St Andrew's Church. For details visit www.standrewsgwp.org/hearing

NEED HIGHER CEILINGS THIS CHRISTMAS?

Whether you are looking for higher ceilings to fit the tree or a fireplace for Santa to come through, there's still time to find you a buyer before Christmas.

If you're thinking of moving talk to us - the remainder of the year is still ripe with opportunities for Seymours clients with many active buyers and sellers who are all eager to make their move before the end of the year.

For a free valuation, please call us on 01483 757700



Zo Khan
Partner



Brett Foulser
Sales Director

Woking
01483 757700 | sales@seymours-woking.co.uk
seymours-estates.co.uk



Seymours

