

GOLDSWORTH NEWS

February 2025 – Issue 191

Inside:

- GPCA upcoming events – p3
- Aiming for Gold – p5
- Dates for your diary – ps10&11

Spring edition



www.ourgoldsworthpark.org.uk



Photo: Pam Taylor.

SALES, SUPPORT AND ADVICE FROM YOUR LOCAL EXPERTS

WE'RE HERE TO HELP YOU

At RSM, we offer a fast and friendly repair service for most domestic appliances, delivered by fully qualified engineers. Take advantage of our fixed price call outs and labour charges.*

*Plus parts and VAT

Hotpoint



BOSCH

STOVES

beko

ZANUSSI

Indesit

Lec



EFF



GREAT
OFFERS
IN-STORE

WITH
euronics
COMPETITIVE
PRICES

RSM

Domestic Appliances

FRIENDLY SERVICE • BIG SAVINGS • FAST DELIVERY

**SUPPORT YOUR LOCAL
HIGH STREET!**

Showrooms in Knap Hill,
Guildford, Ashted
and Epsom Downs

Call 01483 539531

Buy online at
rsmdomesticappliances.com



Do you need an Angel in your life?

Exceptional home care visits from exceptional carers

Most people in need of care would prefer to stay in their own home. Our home care visiting service is carefully tailored to suit you or your loved ones needs. We can help people to retain their independence and stay connected to friends, relatives and pets, safe in their own home where they want to be.

Our caregivers are carefully selected. We find excellent people with the right mix of skills, experience and a true caring nature, so that they can provide consistently superior home care.

We can help with activities ranging from shopping and companionship, to personal care, hospital discharge support and end of life care.

We can visit from one hour each week to every day, for as long as you need us to help with:

- Companion & Social Care
- Personal Care
- Dementia & Alzheimer's Care
- Post-Hospital Stay Care
- Palliative
- End of Life Care
- Live-in Care
- Overnight Care



Find out more about how a Visiting Angel can help

Call 01483 931 934

www.visiting-angels.co.uk/centralsurrey/
CentralSurrey@visiting-angels.co.uk
Guildford, Woking, and Surrey Heath Boroughs.

VisitingAngels
QUALITY AT HOME CARE



Great Place To Work®

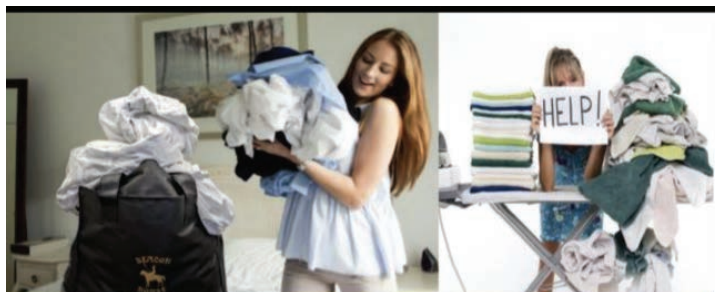
Certified
MAR 2024-MAR 2025
UK

We're looking for Level 2+ Nursery Nurses to join our established nursery in Goldsworth Park.

We have opportunities to join our friendly team on a full time or part time basis.

Scan the QR code or email
recruitment@toadhall-nursery.co.uk

Goldwater Lodge, Wishbone Way
Woking, GU21 3RT



20% Discount

Off Your Dry Cleaning Bill
applied the third time you use our service in a month,
as a little "Thank You" from us,
T&C's apply - Offer valid until: End of Month

Beacon House Dry Cleaners

7 Goldsworth Park Shopping Centre, Woking, Surrey, GU21 3LG (Opp. Waitrose)

01483 77 21 24

bhfcsystem@yahoo.co.uk

info@beaconhousedrycleaners.co.uk www.beaconhousedrycleaners.co.uk



LE DRAIG
ELECTRICAL/PROPERTY
SERVICES LTD

Checkatrade
Where reputation matters

Electrical contractors & property maintenance services:

- inspection & testing • fault finding
- consumer unit changed • lighting & power

07799 098 200 / 01483 730 305



www.ledraigelectrical.co.uk



PENNY & HAYTER
OPTICIANS



- Independent Opticians
- Personalized service
- Warm & friendly approach
- Highest standards of eyecare
- Latest equipment
- A wide selection of frames, glasses lenses and contact lenses

**To start your eye care journey,
call Penny & Hayter Opticians on
01483 475205, or visit:
www.pennyandhayter.co.uk**

3 Albion Parade, High Street, Knaphill
Woking, Surrey, GU21 2PS
info@pennyandhayter.co.uk

GOLDSWORTH NEWS

GOLDSWORTH NEWS is the magazine of the Goldsworth Park Community Association CIO and is distributed free to approximately 5,000 homes and organisations throughout Goldsworth Park and the surrounding area.

EDITORIAL TEAM:

**Chris Taylor (Editor)
and Royer Slater.**

editor@ourgoldsworthpark.org.uk

Published by the
Goldsworth Park Community Association CIO

Designed and printed by Knaphill Print

ADVERTISE IN GOLDSWORTH NEWS

Contact:

editor@ourgoldsworthpark.org.uk

DISTRIBUTION

Peter Hill

Tel: 01483 835183

Email: peter.hill3@ntlworld.com

If you would like to provide an article for the next edition please contact the editor by 21st April 2025. The copy date for articles and "Diary Dates" entries is Monday 5th May 2025.

Email: editor@ourgoldsworthpark.org.uk

GPCA CIO MEETINGS

Next public meeting 26th March 2025
7.30pm The Lodge Goldsworth Park.

Membership of the GPCA is required to receive details of forthcoming meetings. Contact chair@ourgoldsworthpark.org.uk for information on how to join.

LOCAL COUNCILLORS

Ann-Marie Barker WBC (Lib Dem)
Martin Sullivan WBC (Lib Dem)
Stephen Oades WBC (Lib Dem)
Lance Spencer SCC (Lib Dem)
Saj Hussain SCC (Conservative)

DISCLAIMER

No responsibility for the quality of goods or services advertised in this magazine can be accepted by the publishers, designers or printers. Advertisements are included in good faith.

No part of this magazine may be reproduced in any form without the express prior permission of the publishers.

The publishers do not necessarily agree with the views expressed by contributors nor do they accept any responsibility for errors of interpretation in the subject matter of this magazine.

All reasonable care is taken to ensure accuracy in preparation of the magazine but neither the publisher nor printer can be held legally responsible for the return of unsolicited manuscripts, art work or projects. Whilst every care is taken, no responsibility can be accepted for the safety of material submitted.



Please read and recycle

Views from a Trustee

Well, here we are, a month into 2025, and it's been a bit of a bumpy ride so far this winter, with storms Ashley, Bert, Conall, Darragh and Eowyn to contend with. When I see so many garden fences lying damaged on the ground, I often think of that expression, "It's an ill wind that blows nobody any good". Fencing companies nationwide must have been flat out trying to keep up with demand, and I've seen a goodly few wonderfully smart new fences around Goldsworth Park. Thankfully, though, we escaped the worst of it, and a squelchy lawn is a small price to pay when we consider the damage that has been wrought elsewhere.

The Christmas Market on Friday 29th November, organised by St Andrew's Church and supported by Goldsworth Guides and Brownies was well-attended, with some very interesting craft stalls. If you missed it last year, make a diary date for this year. You'll find some lovely little Christmas gifts there. The opening of the Market was preceded by the lighting-up of the Goldsworth Park Christmas Tree, kindly donated by Waitrose, and the singing of Carols, marvellously accompanied by the Salvation Army Band. A truly fitting beginning to the Christmas season. The stoical Christmas tree did well against the wintery storms – and thanks go to Roger Westcott of Goldsworth Angling Club fame, for rescuing the tree more than once as the gales gave it a quirky lean.

Please make a diary date for our next Litter Pick – Saturday 8th March, meeting at 2pm at the playground side of the Lodge, close to the climbing wall. Please dress for the occasion, and wear strong shoes. Stay for as short or long a time as you like – we finish officially at 4pm. If you are aware of any area near to your home where litter collects, please contact me before the event, and we will send a small team in your direction.

The next GPCA quiz is on Friday the 28th February at 7.30pm at Dianthus Upper Deck, Wishbone Way. For further details see the poster on page 3. Hope to see you there.

Our next Open Meeting will be held on Wednesday 26th March at 7.30pm at the The Lodge, Goldsworth Park. It will be great to meet you there. The Open Meeting is a wonderful opportunity to meet fellow residents and share views. I am delighted that our Guest Speaker is Ellen Pirie who will talk about the work of WEAct Woking Environment Action which includes the highly successful Repair Cafes one of which is held regularly at Andy's Community Café, Goldsworth Park. See Dates for your Diary on pages 10 and 11 for the next Repair Café at St Andrews.

As we go to press, we have no further news about the possible reopening of the public toilets by the playground, but I understand that discussions are still ongoing.

Keep looking out for those signs of Spring – daffodils and hazel catkins, followed by ducklings and cygnets on the lake – and longer daylight hours!

Enjoy our parkland estate!

Celia Young

If you would like to be involved with the work of the GPCA please contact the editor for an informal chat on editor@ourgoldsworthpark.org.uk



Photo: Pam Taylor

@ourgpca

facebook.com/groups/goldsworthpark

www.ourgoldsworthpark.org.uk

Community Litter Pick – Sponsored by Shynefest

THE GPCA's next community litter pick is on Saturday 8th March, meeting at The Lodge car park, Wishbone Way at 2pm. Litter pickers, bags and high-vis safety vests are all provided. All welcome, but children must be accompanied by an adult. Hope to see you there. Any questions please contact editor@ourgoldsworthpark.org.uk

GPCA Open Meeting

Next GPCA Open Meeting Wednesday 26th March 7.30pm The Lodge, Goldsworth Park. Guest speaker Ellen Pirie who from WEAct Woking Environment Action. Any questions and apologies please contact editor@ourgoldsworthpark.org.uk

Please mention Goldsworth News when responding to advertisers in this edition.

A personal view

Royer Slater



Summer, autumn, winter, spring: the familiar cycle of seasons governs our lives and our environment. Personally, the most exciting and enchanting season is spring, a time of new growth and bright colours: blue skies, green leaves and blooms in a wide variety of hues.

I love to see the signs of spring in Goldsworth Park: the first flowers to bloom, trees and bushes waking from winter hibernation and proving they are very much alive with fresh, green leaves.

It's as though nature knows we need cheering up after the winter's chilliness and shorter daylight.

My most enduring memories of primary school are of springtime nature walks with our teachers along a nearby semi-rural lane – we were on a new-build housing estate with little wildlife of its own – and seeing the new spring growth. Back in the classroom, we discussed, wrote about and drew what we'd seen: I especially recall drawing the "sticky buds" of horse chestnut trees and the distinctive trumpet flowers of daffodils!

Before we even notice them, the first plants to bloom each year are waiting for warm days so they can rush into flower. When the season is mild, they come out earlier and release their scent on warm days to entice pollinators – flies as well as the majority of bee species which, unlike honey bees, are active through winter.

We've already seen the snowdrop and crocus – both tough little plants, so they can be among the earliest flowers to bloom. As I write, it's the turn of one of the most iconic images of spring: the daffodil. To see blankets of these yellow flowers popping up in woods and grassland means spring is well underway.

From April, woodlands will be transformed by carpets of bluebells, one of Britain's favourite wild flowers and another iconic springtime sight. Many of Surrey's woodlands will be carpeted with deep blue

blooms. Bluebells can grow quickly because they have lots of energy stored in their bulbs. Often associated with ancient woodlands, our wild bluebell comes into flower before the surrounding trees are in full leaf, so its life cycle is completed while light levels are high.

Make the most of this spring. You don't have to go far: take a leisurely walk around Goldsworth Park. Drink in the sight of the fresh green growth and the spring flowers; breathe in the spring scents; listen to the birdsong.

Try to go for a woodland walk. Surrey Wildlife Trust (surreywildlifetrust.org) and Forestry England (forestryengland.uk) have ideas for places to visit on their websites. The BBC Countryfile magazine's website has a guide to the wild flowers you're likely to spot: visit <https://tinyurl.com/29fxhnsn>.

Don't just walk for the sake of it – take time to enjoy the season!
Happy spring!

Photos: Pam Taylor.



GPCA
Goldsworth Park
Community Association CIO

QUIZ NIGHT

Friday 28th February 2025
7.30pm
at Dianthus Upper Deck,
Wishbone Way

£7 PER PERSON
Teams of 6-8
Bar on the night

Email social@ourgoldsworthpark.org.uk
to book your place

Natural Goldsworth Park Update



A vast variety of wild plants, creatures and fascinating fungi have made Goldsworth Park their home. If you ever doubt it, visit the Natural Goldsworth Park group on Facebook, where enthusiastic residents share photos of what they've spotted. Be sure to join the group if you love the natural world and Goldsworth Park's wild spaces.

In May it's hoped we'll see the yellow, tube-like flowers of Yellow Rattle plants appearing on the meadow. Seeding of Yellow Rattle took place in over a hundred places on the meadow last year. The plant is commonly used to transform grassland into a wildflower meadow, being semi-parasitic: it leeches nutrients from the root systems of grasses, making them weaker. This allows less robust wildflowers an opportunity to thrive. It is hoped Yellow Rattle will self-seed and spread naturally across the meadow.

The GPCA is looking an NGP project manager, to lead efforts to conserve and manage the meadow and woodland as an unspoilt open space. If you are interested or would like more information please email editor@ourgoldsworthpark.org.uk

To keep up to date with what's happening in Goldsworth Park nature-wise, and to see superb nature photos taken by fellow residents visit the Natural Goldsworth Park group on Facebook.

Aiming for Gold through litter picking

Sixteen year-old Ryan Fairclough has been litter picking in Goldsworth Park, not just to give to the community but also as part of his efforts to achieve a prestigious Gold level Duke of Edinburgh's (DofE) Award.

The DofE programme enables young people to progress through three levels: from Bronze through Silver to Gold. There are four sections to complete at Bronze and Silver level and five at Gold.

Ryan, of Watercress Way, explained: "I'm now at Woking College, but I completed my Bronze and Silver Duke of Edinburgh Awards at school. I jumped at the chance of doing my Gold Award with the college.

"The Gold Award takes a minimum of a year to complete and requires me to set and achieve objectives in different areas. The first is physical activity, for which I'm doing six months of weekly judo classes. The second section is to develop skills, so I am doing a selection of IT courses for a year.

"The third is 'Volunteering' for which I am undertaking voluntary activities for a 12 months. Having lived near Goldsworth Park Lake all my life, I decided to litter pick, as it something local and a way of giving to the community.

"Many people say thank you or seem surprised someone my age is litter picking. It's a real boost and makes it worthwhile!"

Later this year Ryan will do the fourth, "Expedition" section towards the Gold Award, by planning, training for and completing a five-day expedition in Wales. It will leave him with just the fifth section, "Residential", for which he will stay and work away from home for five days.

"It's full on, but I hope to complete everything by November 2025, then visit Buckingham Palace to receive my Gold award at some point in 2026.

"I recommend the Duke of Edinburgh awards to anyone thinking about it – it's hard work, but worth it!"

Ryan stresses he isn't neglecting his studies. "I'm studying for A-level Business, a BTEC Diploma in IT, which is equivalent to two A-Levels, and sitting an EPQ (Extended Project Qualification) at the moment with the aim of also doing AS core maths next year.

"I have ambitions to go into product management or similar, or perhaps something in the IT industry."

Meanwhile you might see Ryan litter picking around the Park. If so, be sure to say thanks – and perhaps wish him well in his studies and his efforts towards the Gold DofE Award!

Photos: Ryans family



Volunteer GPCA News deliverers sought

Do you fancy volunteering to deliver Goldsworth News to your neighbours?

If so please get in touch with Peter Hill, 01483 835183, peter.hill3@ntlworld.com

The following roads are currently covered by The Editor who would welcome your support to take on delivery to: Bankside, Caradon, Dene Place, Selby, Wyndham Road, Waterside Way, Winnington Way, Lidstone Close, Quintrell Close and Foxhills.

Goldsworth News will be delivered to your door by our dedicated volunteer coordinator Peter and will only take a few minutes of your time to deliver. I am sure you will find supporting your local community enjoyable – you could even meet a fellow resident you have not spoken to before.



**Goldsworth Park
Lake and Footpath**



Please be a responsible dog owner

Respect other lake users and wildlife at all times



Thank you

Goldsworth Park Scout Group



By Akela (Hilary) CUB Leader

1st Goldsworth Park Scout Group 2024 Spring Update

Remembrance Sunday 2024 – Beavers & Cubs helped with the Royal British Legion Poppy Appeal and collected over £1000 at GWP Denton Way Shopping Centre on Saturday 9th November 2024, many thanks to the generous local people of GWP. They also paid their respects to those that have fallen by taking part in the Remembrance Day Parade on Sunday 10th November.

Guides and Scouts Gang Show Winter 2024 review – A fund-raising effort for the continued running of the Generation Centre is held in the form of a Gang Show. This takes place every 18 months (it takes a while for the adults to recover!) and not only raises valuable funds but gives our young people the opportunity to perform on stage, in front to an audience. This builds confidence and can act as a springboard to future careers in the performing arts.

The G.A.S Gang Show 2024 was no exception and in traditional 'organised chaos' we managed to entertain our audiences over two performances with the theme 'Colour & light'. All Units from the Guides



& Scouts took part and that, combined with refreshments and raffle raise over £2000 for the Generation Centre. The opening number brought all the Units together with a choreographed performance, thanks to Ashleigh Collyer from the Guides who

organised it. Various performances from the Units were enjoyed by the audience of parents, family and friends.

2025 and beyond.

So what does 2025 hold in store for the **1st Goldsworth Park Scout Group**.... well we have the **BEAVERS** joining in with BAZZAZ (a Surrey County run event) and **CUBS** have just had Woking District Science day, are looking forward to having their own POD CAMP at Walton Firs and also joining in with Woking Districts Sports Evening. Whilst the **SCOUTS** are holding their own simple sleepover along with the opportunity to participate in Operation Last Post, trip to Ypres later in the year.

We have welcomed a new adult or two on board as regular leaders to help with the continued running of the Sections and we would welcome anyone who has a few hours to spare that would be interested in helping run the Group as members of the Trustees Board. If you would like to know more about our Group please contact our Group Team Leader: Dave Morriss on: gsl.gpark@gmx.com

We are all looking forward to getting out and about on Goldsworth Park and take part in the local GPCA organised events when we can.

Akela (Hilary) CUB Leader

TFM FENCING & LANDSCAPES

All Aspects of Fencing & Landscapes



For FREE Quotes & Estimates call Florin
07503 964675

- Fencing • Patios • Decking • Planters • Brickwork
- Driveways • Garden Buildings • Groundwork • And many more

One of Jacksons Fencing approved installers

Serving Surrey and surrounding areas

Rated 5 stars by our customers delivering a top notch job quality



tfmfencing@gmail.com

www.tfmfencing.com

Local Bowling Clubs Open Days

Have you thought of taking up lawn bowls? Two local clubs are holding free Open Days this spring, when you meet the coaches, play bowls and chat with members about the club. The Open Days are on the same day, so take your pick and see how you get on! In addition to friendly and league bowls matches, both clubs also hold a variety of social events throughout the year.

Horsell Bowling Club's invites novice and experienced bowlers to try out their bowling skills anytime from 9.45 am and 12 noon on Saturday 26th April. No experience or booking is necessary and all equipment will be provided – just wear flat shoes. The Club is in Queen Elizabeth Gardens, High Street, Horsell GU21 4SS, next to the Village Hall and opposite The Crown. Its web site is horsellbowlingclub.co.uk. If you have any questions contact Alison on 01483 720201 or email a.ferries@sky.com

Woking Park Bowling Club also offers a welcome to new bowlers of all abilities from 10:30am to 12:30pm, also on Saturday 26th April. Just turn up in flat soled shoes or trainers – the club will provide the bowls and no experience is necessary. The Club is within Woking Park, Kingfield Road, Woking GU22 9BA. The web site is wokingparkbowlsclub.hitssports.com. For more details call Carole on 07720 471318 or email wokingparkbowls@gmail.com

Time for a *Spring* Complete Service with



Motormech



**FREE BRAKE AND
BATTERY CHECK****

MOT TEST £39.00

**COMPLETE
SERVICE***

£179.00

INC. VAT

**STANDARD
SERVICE***

£99.00

INC. VAT

**MOT
TEST**

£39.00

INC. VAT

**COMPLETE
SERVICE &
MOT***

£199.00

INC. VAT

**STANDARD
SERVICE &
MOT***

£119.00

INC. VAT

Our Service Team will be happy to provide you a quotation and make a booking. You can also book online. All makes and models.

* Terms & Conditions apply. We will report to you if the spark plugs require changing.

* We'll collect and deliver your vehicle **Free of charge** within a 5 mile radius of GU2 7YB. The Complete and Standard service offer includes all makes and models up to engine size 2000cc. Additional surcharges will apply for larger engine sizes.

** Free Brake and Battery Check with Complete Service and Complete Service with MOT

Book Online: www.motormechguildford.co.uk

OR CALL: 01483 502671

Unit 1H, Cathedral Hill Industrial Estate, Guildford, Surrey GU2 7YB



News from St Andrew's by Revd Scott Smith

Greetings and Happy New Year!

I hope you're all well and that you're managing to stay dry. As I write, I can't remember the last day without rain!

St Andrew's enjoyed a good Christmas with a market, school carol concerts, and the usual celebrations and services across Christmas week, with some new faces and a fair amount of mince pies.

In our Sunday morning gatherings we're currently thinking about the stories we live by and that shape us, alongside the story that God invites us to live in.

At each infant baptism at St Andrew's we give the gift of an (age-appropriate) Bible. The version we currently give, tells the story of a God who, "loves us with a Never Stopping, Never Giving Up, Unbreaking, Always and Forever Love". It's a wonderful phrase and a wonderful truth to live by. It's true for you, as well as for me.

The story of the Bible can be seen as a little like a Netflix series of six episodes or as a play of six acts.

In Episode 1 we have Creation where God establishes His kingdom and creates humanity to reflect His love and character into the world. In Episode 2, we see everything fall apart, as human rebellion sees sin and brokenness affect everything. In Episode 3, we see God select Abraham (and through him establish a people, Israel) as a partner to put things right. In Episode 4, after a short interval, we see Jesus enter the drama to succeed where Israel has failed. In Episode 5, we see Jesus commission a new body, a new people – The Church – to continue His ministry of extending God's kingdom of love, grace and salvation. Finally, in Episode 6 we'll see Jesus return and establish His kingdom once and for all, and what was once our reality – of humanity living in perfect relationship with God – will become our lived reality once again.

It's a story of a God who "loves us with a Never Stopping, Never Giving Up, Un-breaking, Always and Forever Love"!

In April we're looking forward to celebrating God's 'never stopping' love in our Easter celebrations.

It's a love that's perhaps best understood in Jesus' giving of Himself: His death on a Roman Cross. But of course, two days later, Jesus' body is no longer in the tomb where it was laid. He is Risen!

And it's Jesus' resurrection that provides a foundation of hope for all that's to come in Episodes 5 and 6. As John's gospel puts it, "The light shines in the darkness, and the darkness did not overcome it."

You are very welcome to join us this Easter at St Andrew's to celebrate this very good news. We'd love to see you.

Our prayer at St Andrew's is that, however you celebrate this Easter, you would know the great love that God has for you: His "Never Stopping, Never Giving Up, Un-breaking, Always and Forever Love" and the new life and story on offer through Jesus.

As I've said before, I'm not just here for the church family that gathers week-by-week, Sunday-by-Sunday, but for all who call Goldsworth Park home: every single person, whether you used to come to church, have never come, go elsewhere or have no intention of ever coming.

Alongside (and outside of) Sundays, there's always plenty going on at St Andrew's week-by-week.

Do check out our website www.standrewsgwp.org for more information about Baby and Toddler groups, Messy Church, Hymns We Love, our Community Cafe and much more.

Finally, in other news, you may have heard that Christ Church Woking (in the town-centre) is closing its building in mid-March until the Autumn, for renovation and renewal. Its Gateway project includes a Youth and Community Centre dedicated to meet three of the key areas of need identified by Woking Borough Council after the pandemic: mental health support; isolation and loneliness; and children and youth support. During the building works Christ Church will continue to meet on Sunday mornings at the Nova cinema. Its evening services will take place here at St Andrew's, Goldsworth Park. It's good to be able to support and help our friends at Christ Church, as they undertake this project which will be of benefit for all of us who call Woking home.

With every blessing.

Scott



GPCA seeks the following volunteers

THE GPCA is seeking to recruit 3 volunteers:

- GPCA Chair
- Advertising Manager for Goldsworth News
- Natural Goldsworth Park Project Manager

If you are interested or would like more information please contact editor@ourgoldsworthpark.org.uk



Surrey CC Community Link Officer and Local Area Coordinator

Binnie Crooks-Martin is the Local Area Coordinator for Goldsworth Park. Goldsworth Park also has a Community Link Officer Miriam Selman. You can get information about the services they provide by contacting them using the details below:

Contact Binnie via:
Phone: 07816 091279
Email: bintou.crookesmartin@surreycc.gov.uk

Contact Miriam via email:
miriam.selman1@surreycc.gov.uk
surreycommunities@surreycc.gov.uk



STEVE A HANDYMAN / BUILDER

No Job Too Small.....

Property & Garden Maintenance - Including but not limited to:

Paving – Fencing – Drainage - Tiling - Painting & Decorating

Contact for a free quote

Telephone 01276 856716, Mobile 07717 455826

anscomb582@btinternet.com

Lakeview Community Centre

By James Sanderson, Chair, Lakeview Community Action Group

Lakeview Fun Day

We are planning another Lakeview Fun Day this summer on Saturday 19th July. This follows two very successful events held in the last couple of years. There was plenty to do for all the family: bouncy castle, lots of different stalls offering a wide range of activities and goods, live music, various dance performances including around the maypole and several places to eat and drink.

We would like to do something similar this year but also to expand the number and variety of activities being offered therefore we are reaching out to any group who may be interested in running a stall on the day. If you know of a local community group or charity, or a commercial organisation that would be interested please contact admin@lakeviewcentrewoking.org.uk

Current Activities at the Lakeview Community Centre

As a reminder, here are the main activities currently being run at the Lakeview Centre

As mentioned in the last edition, we have the long running mental health support group **Lift Up Together** which meets on Thursday afternoons from 12pm to 3.30pm, with over 20 regular attendees. It is a social self-support group which tries to destigmatise mental health issues in a safe environment. We provide lunch, newspapers and magazines and activities such as bingo, quizzes and games. The lunch

has become an important part of our group for our members as we provide a warm balanced meal especially during the current cost of living crisis.

There is also **Woking Youth** which runs a youth drop-in at the Centre from 6.30pm to 8.30pm on Wednesday evenings, aimed at young people aged 11 to 19. The website for Woking Youth (www.wokingyouth.org.uk) has more details. They are looking for volunteers to help at their sessions: if you feel this might be for you please contact Adam Davey by email at admin@wokingyouth.org.uk.

The Lakeview Centre also hosts the **Bangaleshi Cultural Association**, which holds daily prayers and conducts various other community activities including fitness classes, language lessons and children's groups. Contact the BCA Secretary, Naz Hussain, at mynaz@hotmail.com or 07547 291488 for more details.

We are still planning to relaunch our youth club for primary school children, **Little Minions**, but we require more trained volunteers in order to make it viable. It used to run on Friday afternoon and early evenings providing various activities trying to expand the children's imagination and creativity, as well as refreshments. If you are able to help then please get in touch, at admin@lakeviewcentrewoking.org.uk

Finally, you are interested in hiring the hall at the Centre, please contact Woking Council directly at centres.enquiries@woking.gov.uk

The next Lakeview Community Action Group meeting is on Tuesday the 1st April 2025 at 7.30pm at the Lakeview Community Centre.



Goldsworth Care Helps People

What do you know about Goldsworth Care?

You probably know that it is a "good neighbour" scheme providing transport for residents who need help to get to medical and other appointments, and other services such as shopping, helping with form filling, etc., but what do the people who use the service say?



• "Goldsworth Care is brilliant. They always answer the phone or call back within an hour or so and they always find a driver to take me to my destination."

• "The people at Goldsworth Care are always so kind and patient."

• "The drivers are punctual and friendly, making the journeys enjoyable."

• "I cannot thank the wonderful team at Goldsworth Care enough for their kindness and support."

The other side of the equation is the team of volunteers, so what do they have to say?

• "I enjoy getting to know the clients and other volunteers. The regular meetings are both useful and social."

• "As a volunteer, you are not committed to a specific time each week – you can choose the assignments that suit you best which is important to me."

• "It is very satisfying to do something valuable for other people and they are so appreciative of the help we give."

Goldsworth Care would not exist without volunteers to answer the phone, deal with the admin and drive the clients, answering the phone and following up on 3 or 4 mornings a month or driving once or twice a week mainly locally but possibly as far as Ashford Hospital.

If you would like to be a part of this "wonderful team", come along to one of the regular meetings on the second Wednesday of each month at 10am in Andy's Café, Goldsworth Park Centre, or call 07751 801587 for more information.

WINTER OFFERS

at your local independent retailer

Price Match Guarantee | Super Service | Expert Knowledge

 BOSCH	 BOSCH
1400 Spin 8kg Washing Machine	1400 Spin 9kg Washing Machine
WGE03408GB	WGG24400GB
<ul style="list-style-type: none">• 14 progs. incl. 15 min Quick Wash• Speed Perfect, Active Water• Add laundry feature, delay timer• H84.5 x W59.8 x D58.8cm	<ul style="list-style-type: none">• 22 progs. incl. 15 min Quick Wash• Speed Perfect, Anti-stain system• Add laundry feature, delay timer• H84.5 x W59.8 x D58.8cm
Only £429.00 10 Years Parts 2 Year Warranty A Energy Rating	Only £599.00 10 Years Parts 5 Year Warranty A Energy Rating

**RSM Domestic Appliances**
FRIENDLY SERVICE • BIG SAVINGS • FAST DELIVERY

YOUR LOCAL SUPERSTORE
1-2 Albion Parade, High St.
Knaphill, Woking GU21 2PS
Call 01483 475000
rsmdomesticappliances.com

MORE GREAT OFFERS IN-STORE!

Terms and conditions apply. Sold as an agent of Euronics Limited. All rights reserved. All offers are subject to availability while stocks last. Delivery and installation charges may apply. Exclusions and radius apply. See in store for full details. Images for illustration purposes only. Copyright Euronics 2024.

Dates for your diary



Regular Events

*Events marked with an asterisk, and possibly others too, may take a break during school holidays. We recommend checking with the organisers.

■ **WARM WELCOME Tuesdays, drop in 9am-midday** | Friendly chat and company on in Andy's Community Café at Goldsworth Park Centre. Free entry and with free tea, coffee and biscuits.

■ **COFFEE AND CHAT First, third and fifth Tuesdays of each month, drop in 10.30am-midday** | Conversation and company at **Warm Welcome** in Andy's at Goldsworth Park Centre. Church pastoral assistants are available to offer support to those struggling in any way.

■ **TODDLER GROUPS Mondays and Wednesdays, drop in 10am-11.30am*** | With toys and ride-ons, crafts and singing. Run by St Andrew's Church during school term times, in A2 Youth & Community Centre (next to the church). These are drop-in groups but entry may have to be restricted if max number is reached. Optional donation £2 per family. Details: email toddlers@standrewsgwp.org

■ **BUMP & BEYOND Fridays, drop in 10am-11.30am** | Relaxed group for parents-to-be and parents with babies not yet walking. Offers support and opportunities to make friends and share experiences. Fun for babies with toys and activities. Run by St Andrew's Church in Andy's Café (or the A2 Centre if there is an event in the church). Optional donation £1 per family. Details: email bumpandbeyond@standrewsgwp.org

■ **SING GOLD Wednesdays, 2pm to 3.30pm** | Goldsworth Park's Community Choir meets to have fun singing songs of all kinds in the Chapel at St Andrew's Church, GP Centre.

■ **WOKING YOUTH Wednesdays, 6.30pm-8.30pm** | Drop-in for young people aged 11-19 in Lakeview Community Centre, Tracious Close. See www.wokingyouth.org.uk for details. Volunteers needed to help at sessions: for info please email admin@wokingyouth.org.uk

■ **YOUTH EVENING Alternate Fridays, 7.30pm-9pm*** | For young people aged 11-16, with games and activities, and a termly trip out. Run by St Andrew's Church in the A2 Youth & Community Centre at GP Centre. For information and dates email youth@standrewsgwp.org.

■ **LIFT UP TOGETHER Thursdays, 12pm-3.30pm** | Social self-support group aiming to destigmatise mental health issues in a safe environment. With lunch, newspapers and magazines and activities such as bingo, quizzes and games, in Lakeview Community Centre, Tracious Close.

■ **ANDY'S COMMUNITY CAFÉ Wednesdays and Thursdays, 10am-2.30pm (during term times)** | Offers a range of superb barista coffees, teas and snacks and a "pay as you feel" menu: no fixed prices – just pay what you can afford (or nothing if you're feeling the pinch), so no one goes hungry. Toddler-friendly play space with train track, books and toys, free Wi-Fi, comfy sofas or tables to work from, dog friendly. Andy's is on the ground floor at St Andrew's Church, GP Centre, GU21 3LG. Details: www.standrewsgwp.org/andys

■ **CRAFT GROUP Thursdays, 10am-11.30am*** | With a variety of craft activities in Andy's Community Café. Materials provided, all FREE.

■ **ART GROUP Thursdays, 1pm-3pm** | Creativity, conversation and coffee. All abilities welcome. Meet and make friends in Andy's Community Café. Materials provided, all FREE. The event does not take place when the leader is away, so it is recommended you check with the St Andrew's Church office on 01483 723879.

■ **BOAT TRIPS ON THE BASINGSTOKE CANAL**

The Basingstoke Canal Society owns two passenger boats providing pleasure trips on the Basingstoke Canal. *Kitty* operates from The Town Wharf in Woking, while *John Pinkerton II* operates from Odiham. For details and bookings visit basingstoke-canal.org.uk/boat-trips

■ **THE LIGHTBOX – Tuesdays to Sundays, times vary (closed Mondays and Bank Holidays)** | Art exhibitions (changed regularly), Woking's Story (museum) plus workshops for adults and for families with young children. For full details of current exhibitions and events visit thelightbox.org.uk or call 01483 737800.

■ **WOKING REPAIR CAFÉ operated by Woking Environment Action (WEAct) – 10am to 12.30pm** | Volunteers offer free repairs for small electrical/mechanicals, clocks, furniture, toys, garden tools, clothing and textiles. Donations welcome to cover costs. Only items that can be carried by one person will be accepted. No petrol-driven items for safety reasons. Upcoming dates/venues: **8th March** at St Mary's Community Centre Byfleet KT14 7LZ; **12th April** at Old Woking Community Centre GU22 9AT; **10th May** at Trinity Methodist Church GU21 4LH; **14th June** at Andy's Community Café, Goldsworth Park GU21 3LG. If possible, email beforehand with details of what you wish to bring: hello@wokingenvironmentaction.com.

Diary Dates

February

■ **FRIDAY 28 FEBRUARY GPCA Quiz Night 7.30pm** | Teams of 6-8. Bar on the night. Venue: the Upper Deck of the Dianthus Building, Wishbone Way, GU21 3RT. Email social@ourgoldsworthpark.org.uk to book your place.

March

■ **WEDNESDAY 5 MARCH Hearing aid clinic: drop in from 1pm-3pm** | NHS hearing aid general maintenance including cleaning retubing, general advice and free NHS batteries. St Andrew's Church, GP Centre. Free service run by NHS-trained volunteers. For details visit www.standrewsgwp.org/hearing

■ **FRIDAY 7 MARCH Trefoil Guild, 7.30pm-9.30pm** | Monthly meeting for current and past Guiders who enjoy meeting like-minded folk. The Generation Centre, GP Centre, Denton Way. Details: email sylvia.lambart@ntlworld.com or call 01483 766001

■ **SATURDAY 8 MARCH Woking Borough Council Councillors Surgery 11am-12pm** | Meet your local councillors and your MP Will Forster in Quackers Café, Wishbone Way, Woking GU21 3RT.

■ **SATURDAY 8 MARCH GPCA Community Litter Pick, 2pm** | Meet at The Lodge car park, Wishbone Way. Litter pickers, bags and high-vis safety vests are provided. All welcome, but children must be accompanied by an adult. For more details email social@ourgoldsworthpark.org.uk

■ **TUESDAY 11 MARCH Hymns We Love 11am** | We'll enjoy a beautiful rendition of a hymn, explore the story behind it and the meaning behind the words. There will also be time to chat. St Andrew's Church, GP Centre. For more information or to express an interest, email community@standrewsgwp.org or call the church office on 01483 723879.

■ **SUNDAY 16 MARCH Messy Church, 3pm-5pm** | Join us for fun, crafts, games, songs and food. Aimed at families with children aged 4-10 (primary school age), but older/younger siblings are welcome). St Andrew's Church, GP Centre.

■ **TUESDAY 26 MARCH Goldsworth Park Community Association (GPCA) Open Meeting, 7.30pm** | Hear from GPCA Trustees and guest speaker Ellen Pirie from WEAct Woking Environment Action. Plus the opportunity to raise local issues with councillors. Goldsworth Lodge, Wishbone Way, Woking GU21 3RW.

April

■ **WEDNESDAY 2 APRIL Hearing aid clinic: drop in from 1pm-3pm** | NHS hearing aid general maintenance including cleaning retubing, general advice and free NHS batteries. St Andrew's Church, GP Centre. Free service run by NHS-trained volunteers. For details visit www.standrewsgwp.org/hearing

■ **FRIDAY 4 APRIL Trefoil Guild, 7.30pm-9.30pm** | Monthly meeting for current and past Guiders who enjoy meeting like-minded folk. The Generation Centre, GP Centre, Denton Way. Details: email sylvia.lambart@ntlworld.com or call 01483 766001

■ **SATURDAY 5 APRIL Woking Borough Council Councillors Surgery 11am-12pm** | Meet your local councillors and your MP Will Forster in Quackers Café, Wishbone Way, Woking GU21 3RT.

■ **SATURDAY 5 APRIL Andy's 'Out of Hours', 7.30pm–10pm** | Live music and entertainment in the comfort of Andy's Community Café, with licensed bar and food. Tickets FREE (donations accepted) but book here: tinyurl.com/andysooh

■ **THURSDAY 10 APRIL Seniors' Tea, 2pm–4pm** | Free event (donations accepted). Guest speaker to be announced. In Andy's Community Café (within St Andrew's Church). Booking essential: please call 01483 727834 or email pastoral@standrewsgwp.org

■ **WEDNESDAY 16 APRIL Pop-up Messy Church, 10am–12pm** | Join us for fun, crafts, games, songs and food. Aimed at families with children aged 4–10 (primary school age), but older/younger siblings are welcome). St Andrew's Church, GP Centre.

■ **SATURDAY 26 APRIL "Encounter" free local youth event, 6.30pm–9pm** | Special youth event being for young people in school years 7 to 13 from the Woking area to meet and hear about God in a different way. Our time together will start with refreshments, games and a chance to socialise, followed by lively worship and a guest speaker. Join us for food, fun, games, talk and worship. For info and to sign up visit <https://tinyurl.com/encounter-apr25>. Encounter is organised by Goldsworth Park-based charity Engage Woking Schools and supported by St Andrew's Church. For more info email Patrick: youth@standrewsgwp.org

May

■ **WEDNESDAY 1 MAY Hearing aid clinic: drop in from 1pm–3pm** | NHS hearing aid general maintenance including cleaning retubing, general advice and free NHS batteries. St Andrew's Church, GP Centre. Free service run by NHS-trained volunteers. For details visit www.standrewsgwp.org/hearing

■ **FRIDAY 3 MAY Trefoil Guild, 7.30pm–9.30pm** | Monthly meeting for current and past Guiders who enjoy meeting like-minded folk. The Generation Centre, GP Centre, Denton Way. Details: email sylvia.lambart@ntlworld.com or call 01483 766001

■ **SATURDAY 4 MAY Woking Borough Council Councillors Surgery 11am–12pm** | Meet your local councillors and your MP Will Forster in Quackers Café, Wishbone Way, Woking GU21 3RT.

■ **TUESDAY 13 MAY Hymns We Love 11am** | We'll enjoy a beautiful rendition of a hymn, explore the story behind it and the meaning behind the words. There will also be time to chat. St Andrew's Church, GP Centre. For more information or to express an interest, email community@standrewsgwp.org or call the church office on 01483 723879.

June

■ **SUNDAY 1 JUNE Messy Church, 3pm–5pm** | Join us for fun, crafts, games, songs and food. Aimed at families with children aged 4–10 (primary school age), but older/younger siblings are welcome). St Andrew's Church, GP Centre.

■ **WEDNESDAY 4 JUNE Hearing aid clinic: drop in from 1pm–3pm** | NHS hearing aid general maintenance including cleaning retubing, general advice and free NHS batteries. St Andrew's Church, GP Centre. Free service run by NHS-trained volunteers. For details visit www.standrewsgwp.org/hearing

■ **FRIDAY 6 JUNE Trefoil Guild, 7.30pm–9.30pm** | Monthly meeting for current and past Guiders who enjoy meeting like-minded folk. The Generation Centre, GP Centre, Denton Way. Details: email sylvia.lambart@ntlworld.com or call 01483 766001

■ **SATURDAY 7 JUNE Woking Borough Council Councillors Surgery 11am–12pm** | Meet your local councillors and your MP Will Forster in Quackers Café, Wishbone Way, Woking GU21 3RT.

■ **SATURDAY 7 JUNE Andy's 'Out of Hours', 7.30pm–10pm** | Live music and entertainment in the comfort of Andy's Community Café, with licensed bar and food. Tickets FREE (donations accepted) but book here: tinyurl.com/andysooh

■ **SATURDAY 28 JUNE Goldsworth Park Summer Fair 10am–3pm** | Games, fairground rides, entertainment, food, market stalls, local charities and more. In and around the Church and the Generation Centre at Goldsworth Park Centre. Hosted by St Andrew's Church in partnership with Goldsworth Park Guides, and supported by the GPCA. Free entry.

Local Organisations in Goldsworth Park

■ GOLDSWORTH PARK GUIDES AND SCOUTS

Meetings are in The Generation Centre at The Goldsworth Park Community & Shopping Centre.

GUIDES: Rainbows (ages 5–7) – Monday, Tuesday and Friday 4.45pm to 5.45pm; Brownies (ages 7–10) – Monday Tuesday and Friday 6pm to 7.30pm; Guides (ages 10+) – Tuesday 7.45pm to 9.15pm. Contact: Hannah Lambart on 01483 766001 or email gpbrownies4@hotmail.co.uk

SCOUTS: Beavers (ages 6–8) – Wednesday 5pm to 6pm; Cubs (ages 8–10) – Thursday 5.45pm to 7.15pm; Scouts (ages 10+) – Thursday 7.30pm to 9.00pm. Contact: Dave Morris on 07985 684086 or email gsl.gpark@gmx.com. Dave says the group needs extra leaders or helpers so they can accommodate young people on the waiting list: can you help?

■ GOLDSWORTH PARK RANGERS FOOTBALL CLUB

Grassroots football opportunities for boys and girls, based at Goldsworth Park Recreation Ground. Details: visit gprfc.org or email clubsecretary@gprfc.org

■ SEA CADETS WOKING

Through activities and adventures, we learn teamwork, respect, loyalty, self-confidence, commitment, self-discipline, honesty and how to be the best version of ourselves. We meet at the Dianthus Building, Wishbone Way GU21 3RT. Sea Cadets (ages 12–18) – Mondays and Thursdays 7pm–9pm; Junior Cadets (ages 10–12) – Mondays 7pm–9pm; Royal Marines Cadets (13–18) – Mondays and Thursdays 7pm–9pm. Details: visit www.sea-cadets.org/woking or email info@wokingseacadets.org.uk or call 01483 901909.

■ WOKING HOCKEY CLUB

With many teams (men's, ladies, mixed, youth and touring sides), plus "back to hockey" sessions, the clubs offer hockey to players of any ability. Details: www.wokinghc.com or email secretary@wokinghc.com

■ GOLDSWORTH PARK BADMINTON CLUB

The club seeks new members who currently play or are thinking of restarting badminton. Meets in Woking High School Sports Hall on Saturdays 1pm–3pm. The club has a friendly but strong level of badminton using feather shuttles whilst enjoying the fun and social side. Details email paulrussell01@aol.com

■ ST ANDREW'S CHURCH

Goldsworth Park's friendly, community-focussed parish church, at the heart of Goldsworth Park near the shops. Our church family is made up of all ages and backgrounds from a variety of nationalities and cultures. We'd love to welcome you at a Sunday service in our upstairs Worship Area (we have a lift!) or during the week at our many events downstairs in Andy's Community Café. Details: www.standrewsgwp.org email office@standrewsgwp.org or call 01483 723879.

■ SALVATION ARMY

We invite you to join with us on Sundays at 11am for our worship meeting. In addition, we offer many programmes at our Community Church throughout the week so please know that you're welcome at The Salvation Army Community Church, Sythwood, Woking GU21 3BE. For details visit www.salvationarmy.org.uk/woking or email woking@salvationarmy.org.uk or call 01483 793704.

■ LAKESIDE CHRISTIAN FELLOWSHIP

Meets Sundays at 10am for worship, teaching and Holy Communion in the Dianthus Building in Wishbone Way, GU21 3RT. Other meetings during the week include Holy Communion, prayer and house groups. For more information visit lcfwoking.wixsite.com/lakeside or email lcf_woking@hotmail.co.uk or call 01483 870045.

■ RADIO SAILING WOKING

We sail model boats on Goldsworth Park Lake on Sundays from 11am (weather permitting), sometimes Wednesday and Fridays, plus competitive meetings (listed on web site). During the other "free" weekends we are more able to answer public questions and let people have a go. Although primarily a sailing group the club is open to models of all types, excluding fast electric and steam. For details see www.rudiosailingwoking.uk

■ GOLDSWORTH CARE

A good neighbour scheme offering help to residents who find it difficult to get around. Volunteer drivers take clients to health centres, shops etc and wait to take them home again. They may also do shopping for housebound people. For details, registration and to request a pickup call 07751 801587, Monday to Friday, 10am–12 noon.

■ WOKING SHOPMOBILITY

Hires out mobility scooters, power chairs and manual wheelchairs to help access Woking town centre shops and amenities. Also rents out manual wheelchairs and travel scooters for holidays and day trips. Blue Badge not necessary. Details: call 01483 776612, visit wokingshopmobility.co.uk or email wokingshopmobility@gmail.com

WE ARE GIVING YOU THE CHANCE TO WIN A

£10,000 HOLIDAY



WHAT'S YOUR DREAM HOLIDAY?

In 2025, Seymours is offering an incredible opportunity to win a £10,000 holiday voucher or one of 20 weekend getaways! To enter, simply instruct your home for sale or rent with Seymours.*

Contact us today for free, no-obligation advice, or scan the QR code to book an instant online valuation.



OUR MARKET PREDICTIONS FOR 2025

The property market has started very positively in 2025 with greater stability of mortgage rates and a high demand from buyers taking advantage of the increased choice of property available to purchase. Seymours are currently registering more buyers than ever before, and this trend does not seem to show any sign of slowing down following economists' predictions of interest rate cuts throughout 2025, which could lead to lower mortgage rates and enhance housing affordability. This improved affordability and certainty will likely drive a substantial increase in transactions, particularly among first-time buyers, which will subsequently influence the mid and higher segments of the market. Woking, and Goldsworth Park in particular, has always been a highly desirable place to buy. With the demand from first-time buyers looking to purchase 1, 2, and 3 bedroom properties, we can only see this increasing throughout 2025, building a strong foundation for sellers looking to upsize locally. If you are considering selling, the current market conditions are highly favourable. Contact the Sales Office for a FREE valuation to see how much your property is worth.



2025 will be an interesting year for lettings, with the biggest change to legislation, in over 30 years, on the horizon. For landlords, the changes mean that finding the right tenant has never been more important, and this has always been where Seymours excel. When it comes to tenant selection, we don't believe all agents are the same. Any prospective tenants go through a thorough five-stage referencing process, far beyond the industry norm.

We are fortunate in Woking to have a consistently high demand for rental properties. The excellent transport links into London, convenient motorway network and access to airports; alongside the plethora of businesses based in and around Woking including automotive, gaming, oil, food and beverage, insurance and IT, still make Woking and its environs an exceptionally appealing location for tenants. Despite affordability concerns potentially tempering growth, the lettings market is set to remain robust, with high demand sustaining upward momentum in rental prices.

Seymours Woking Sales

3a-3b Commercial Way, Woking, GU21 6XR | 01483 757 700

Seymours Woking Lettings

Morris House, 34 Commercial Way, Woking, GU21 6EN | 01483 741300



Seymours

Your Property Partner For Life