

GOLDSWORTH NEWS

May 2025 – Issue 192

Inside:

- GPCA upcoming events – p3
- From the lakeside – p5
- Dates for your diary – ps10&11



www.ourgoldsworthpark.org.uk

Summer edition



Photo: Pam Taylor.

SALES, SUPPORT AND ADVICE FROM YOUR LOCAL EXPERTS

WE'RE HERE TO HELP YOU

At RSM, we offer a fast and friendly repair service for most domestic appliances, delivered by fully qualified engineers. Take advantage of our fixed price call outs and labour charges.*

*Plus parts and VAT

Hotpoint



BOSCH

STOVES

beko

ZANUSSI

Indesit

Lec



EFF



GREAT
OFFERS
IN-STORE

WITH
euronics
COMPETITIVE
PRICES

RSM

Domestic Appliances

FRIENDLY SERVICE • BIG SAVINGS • FAST DELIVERY

**SUPPORT YOUR LOCAL
HIGH STREET!**

Showrooms in Knaphill,
Guildford, Ashted
and Epsom Downs

Call 01483 539531

Buy online at
rsmdomesticappliances.com



Do you need an Angel in your life?

Exceptional home care visits from exceptional carers

Most people in need of care would prefer to stay in their own home. Our home care visiting service is carefully tailored to suit you or your loved ones needs. We can help people to retain their independence and stay connected to friends, relatives and pets, safe in their own home where they want to be.

Our caregivers are carefully selected. We find excellent people with the right mix of skills, experience and a true caring nature, so that they can provide consistently superior home care.

We can help with activities ranging from shopping and companionship, to personal care, hospital discharge support and end of life care.

We can visit from one hour each week to every day, for as long as you need us to help with:

- Companion & Social Care
- Personal Care
- Dementia & Alzheimer's Care
- Post-Hospital Stay Care
- Palliative
- End of Life Care
- Live-in Care
- Overnight Care



Find out more about how a Visiting Angel can help

Call 01483 931 934

www.visiting-angels.co.uk/centralsurrey/
CentralSurrey@visiting-angels.co.uk
 Guildford, Woking, and Surrey Heath Boroughs.

Visiting Angels
 QUALITY AT HOME CARE

We're hiring!



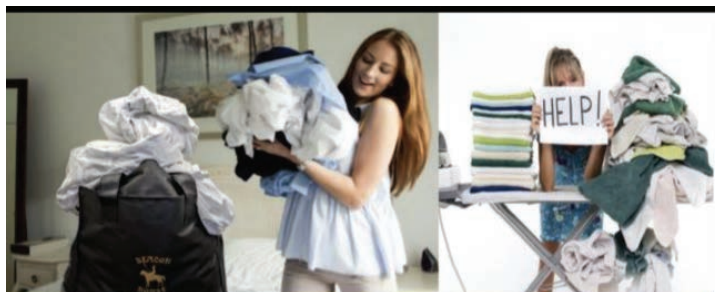
**Full time & part time
 Level 2+ Nursery Nurses
 roles available**

Scan the QR code or email
recruitment@toadhall-nursery.co.uk

**Goldwater Lodge, Wishbone Way
 Woking, GU21 3RT**



Toad Hall
 Children's Nursery



20% Discount

Off Your Dry Cleaning Bill
 applied the third time you use our service in a month,
 as a little "Thank You" from us,
T&C's apply - Offer valid until: End of Month

Beacon House Dry Cleaners

7 Goldsworth Park Shopping Centre, Woking, Surrey, GU21 3LG (Opp. Waitrose)

01483 77 21 24

bhfcsystem@yahoo.co.uk

info@beaconhousedrycleaners.co.uk www.beaconhousedrycleaners.co.uk



PENNY & HAYTER
OPTICIANS



- Independent Opticians
- Personalized service
- Warm & friendly approach
- Highest standards of eyecare
- Latest equipment
- A wide selection of frames, glasses lenses and contact lenses

To start your eye care journey,
 call Penny & Hayter Opticians on
 01483 475205, or visit:
www.pennyandhayter.co.uk

3 Albion Parade, High Street, Knaphill
 Woking, Surrey, GU21 2PS
info@pennyandhayter.co.uk



LE DRAIG
ELECTRICAL/PROPERTY
SERVICES LTD

Checkatrade
 Where reputation matters

Electrical contractors & property maintenance services:

- inspection & testing • fault finding
- consumer unit changed • lighting & power

07799 098 200 / 01483 730 305



www.ledraigelectrical.co.uk



GOLDSWORTH NEWS

GOLDSWORTH NEWS is the magazine of the Goldsworth Park Community Association CIO and is distributed free to approximately 5,000 homes and organisations throughout Goldsworth Park and the surrounding area.

EDITORIAL TEAM:

**Chris Taylor (Editor)
and Royer Slater.**

editor@ourgoldsworthpark.org.uk

Published by the
Goldsworth Park Community Association CIO

Designed and printed by Knaphill Print

ADVERTISE IN GOLDSWORTH NEWS

Contact:

editor@ourgoldsworthpark.org.uk

DISTRIBUTION

Peter Hill

Tel: 01483 835183

Email: peter.hill3@ntlworld.com

If you would like to provide an article for the next edition please contact the editor by 21st July 2025. The copy date for articles and "Diary Dates" entries is Monday 4th August 2025.

Email: editor@ourgoldsworthpark.org.uk

GPCA CIO MEETINGS

Next public meeting October 2025 Date TBA
7.30pm The Lodge Goldsworth Park.

Membership of the GPCA is required to receive details of forthcoming meetings. Contact chair@ourgoldsworthpark.org.uk for information on how to join.

LOCAL COUNCILLORS

Ann-Marie Barker WBC (Lib Dem)
Martin Sullivan WBC (Lib Dem)
Stephen Oades WBC (Lib Dem)
Lance Spencer SCC (Lib Dem)
Saj Hussain SCC (Conservative)

DISCLAIMER

No responsibility for the quality of goods or services advertised in this magazine can be accepted by the publishers, designers or printers. Advertisements are included in good faith.

No part of this magazine may be reproduced in any form without the express prior permission of the publishers.

The publishers do not necessarily agree with the views expressed by contributors nor do they accept any responsibility for errors of interpretation in the subject matter of this magazine.

All reasonable care is taken to ensure accuracy in preparation of the magazine but neither the publisher nor printer can be held legally responsible for the return of unsolicited manuscripts, art work or projects. Whilst every care is taken, no responsibility can be accepted for the safety of material submitted.



Please read and recycle

Community garden opens

A well-being garden has been opened for use by the local community. The tranquil garden next to St Andrew's Church is the result of a year of planning and hard work by church members.

The garden is positioned between the church building and the main car park. St Andrew's vicar, Revd Scott Smith explained: "We chose that location because it is 'community facing' – it can be seen by everyone in the local community, who are encouraged to enter and enjoy it. The garden is a welcoming space alongside the church.

"Members of the local community are welcome to help look after it – perhaps people without a garden of their own. The raised beds mean wheelchairs users can be involved. If you are interested please contact the garden team via the church office on 01483 723879 or by email office@standrewsgwp.org."

The garden was first suggested when St Andrew's was certified as an "Eco Church" in 2022. Julie May, a member of the St Andrew's Eco Group which steered the certification, explained: "The award recognises that the church expresses care for God's world in many ways, including worship and teaching, ensuring our building is energy efficient and eco-friendly as possible, caring for its land with respect for wildlife, and through bonds with the local community.

"We decided to create a wildlife-friendly garden that will enhance the well-being of local residents: a peaceful place to relax, enjoy lunch and for quiet reflection. Many people feel closest to God when in a garden."

Julie co-managed the garden project with Ruth Kirtley, also a member of the St Andrew's Eco Group. They drew up plans and appealed for volunteers to get involved – individuals to help with the groundworks and planting, and suppliers to provide materials, expertise and even manpower.

Julie explained: "There were jobs we couldn't do ourselves and needed specialist help, such as making the wheelchair friendly path, for which we had a large donation from YourFund Surrey, a Surrey County Council initiative that provides funding for community projects."

"The community engagement team at RHS Garden Wisley was very supportive of our project and provided advice as well as donating timber planters, previously used as raised beds at Wisley."

Church members toiled long and hard to make the garden space ready for planting. "It took three days to dig out one shrub!" recalled Julie. "The planters from RHS Wisley had to be cut to size and 'made new', as well as strengthening to take the weight of the soil.

"It was important that we were as environmentally friendly as possible with the materials and plants, both for to benefit wildlife and to enhance the well-being of garden users."

The garden was opened by the Bishop of Dorking, Rt Revd Paul Davies, after a special church service where he was guest speaker and celebrant.

Bishop Paul said: "It was a real joy to worship with the St Andrew's family and to be given the privilege of opening the new garden, which is a great celebration of God's gift of creation, whilst reminding us of our responsibility as stewards of our environment. I was also very inspired by the partnerships that had been formed in its creation, and I look forward to seeing it develop over the years ahead."



Photo: Pam Taylor

@ourgpc facebook.com/groups/goldsworthpark

www.ourgoldsworthpark.org.uk

Events supported by the Goldsworth Park Community Association

Community Litter Pick – Saturday 5th July. Meet at the car park Wishbone Way at 2.00pm. Litter pickers, bags and high-vis jackets provided. All welcome but children must be accompanied by an adult. Any questions contact editor@goldsworthpark.org.uk

Dragon Boat Racing – Sunday 8th June The GPCA is supporting the Woking & Sam Beare Hospices Dragon Boat Race Day by resourcing the tea and coffee stall with volunteers.

Goldsworth Park Summer Fair – Saturday 28th June 10.00am to 3.00pm at the Goldsworth Park Centre. Entry is free. Fun for all the family. Come along to enjoy the entertainment, market stalls and much more. The fairground rides are sponsored by the GPCA. See the poster on page 4 for more details. Any questions please contact office@standrewsgwp.org

Lakeview Community Fun Day – Saturday 19th July 11.00am to 4.00pm at The Lakeview Community Centre and Hartshill Walk Green GU21 3AG. Entry is free. Fun for all the family. Come along to enjoy live music, BBQ, bouncy castle (sponsored by the GPCA), stalls and much more. See the poster 5 on page for more details. Any questions please contact editor@ourgoldsworthpark.org.uk

Please mention Goldsworth News when responding to advertisers in this edition.

A personal view

Royer Slater



Hoverflies are fascinating creatures. Although I've been aware of them for as long as I can remember, it was only on one sunny day in March this year that I sat back and observed them properly.

They live up to their name by hovering in the air, hardly moving in any direction, sometimes rotating on the spot to face in another direction, or performing incredible zigzag manoeuvres. Occasionally they speedily warn off any other hoverfly that ventures near but, in every case, they return to hover in the exact same spot. Then at the end of this grand show they race off at such great speed you might think they've just vanished into thin air.

Perhaps you've spotted a hoverfly visiting flowers for a snack of nectar or pollen, or sunbathing on tree trunks or leaves.



Photo: The Wildlife Trusts
©Richard Burkmar

Over 270 species of hoverfly have been recorded in Britain, though you might see just a few species in Goldsworth Park. They come in a range of shapes and sizes. Most have spots, bands or stripes of yellow or brown against a dark-coloured background, but some have white markings

or even a metallic sheen. Some have names like Batman, Footballer and Marmalade, due to their distinctive markings. The Marmalade (*Episyrphus balteatus*) is said to be the most common hoverfly species in Britain but, to my uneducated eye, the one I saw most often in my Goldsworth Park garden this spring was the Common Drone Fly (*Eristalis tenax*).

Although many types mimic wasps and bees with yellow and brown bands, hoverflies are true flies, called Diptera, with only one

pair of wings, whereas wasps and bees have two pairs. Apart from hoverflies' remarkable ability to hold their position in flight for an incredible length of time, a good way to tell them from those other flies is a "false vein" on their wing, although this is a difficult feature to spot when a hoverfly is on the wing.

Hoverflies are important pollinators. They are also food for birds and even help break down organic matter in gardens. Unfortunately, their distribution has declined by 44% since the 1980s, according to the Joint Nature Conservation Committee (JNCC), the only statutory nature adviser to all four countries of the UK.

Two local organisations, Surrey Wildlife Trust and the Royal Horticultural Society (RHS), are calling on gardeners to help save hoverflies by becoming "hoverfly heroes". Their first suggestion to help hoverflies in spaces large or small is a pollinator plant box. This is ideal for small-space gardens or balconies: it can be jam-packed with flowering plants to suit the season – a lavish buffet for visiting hoverflies! Secondly they suggest hoverfly lagoons: pools of shallow water where fallen leaves create a perfect breeding ground for those hoverfly species whose larvae live in water. Thirdly, log piles and even shrubs can make perfect homes for those hoverfly larvae that feed on the roots, stems or leaves of plants, or on dead and decaying organic matter.

You can learn more about hoverflies and how to help them in a new booklet. It's free to download from www.wildaboutgardens.org.uk. From their four-stage life cycle to migration and mimicry, there's so much to discover about these two-winged wonders. The booklet also includes spotting sheets for just a few of the many adult hoverflies species and their larvae, plus guides to making a pollinator planter and hoverfly lagoon.

Try to make time to watch their incredible flying abilities over the coming months. And if you have a garden, balcony or patio, why not try to give these fascinating and important insects a helping hand?

Letter from Diana Bell

A heartfelt "thank you" to anyone who has helped me and supported me since Amber my little toy poodle was killed by a Rottweiler/cross dog, which will have been over six months ago by the time this is published.

I still miss her such a lot and cannot come to terms with the way she died. I want to thank all the residents of Goldsworth Park who have helped me and given me so much support, from the day it happened when a friend of mine kindly drove us to the vet and that lady, now has become a friend, carried Amber for me as I have to use a walker. Thanks too for all the support on Facebook pages which I have kept and often read.

A week after it happened I let people know that I was laying flowers for Amber where it happened and I couldn't believe that over 60 people came. I never knew how many people loved Amber and I am so grateful for this. Since then I have had so much support from everyone I see: the dog walkers I still walk round the lake with, I have met up with someone to talk to about Amber every day since she died, staff in Waitrose, friends and neighbours in my road (one kind friend brought me several dishes of home-made soup which was greatly appreciated) and friends who do not actually live in Goldsworth Park and the agility group I still go to, and the prayers from St Andrew's and the Quackers café staff. I would never have got through this past six months without all the help and support I have had.

I do not have enough words to express how grateful I am, except for "heartfelt thank you".

Diana Bell

SUMMER FAIR

Saturday 28th June
10am to 3pm

GOLDSWORTH PARK CENTRE

FREE ENTRY

JOIN US FOR LOTS OF FUN!

- fundraising stalls •
- entertainment •
- market stalls •
- yummy food •
- and much more!

Girlguiding
Goldsworth Park

GPca
Goldsworth Park Community Association (CIC)

St Andrew's Church
Goldsworth Park Woking

For more information contact: office@standrewsgwp.org

From the Lakeside



■ Roger Westcott is Goldsworth Park Angling Club secretary and fishing bailiff working in partnership with Woking Council to oversee fishing, monitor fish stocks and other wildlife, and keep the area clean and tidy.

It's that time of year again, (SPRING), a time of new beginning's, a time of new life both flora and fauna and a time for us to hang up our winter coat and hat. A time to enjoy the warmth of sunny longer days and shorter nights, a time to get out into our gardens, cut the grass, tidy the flower beds and veg patch if you have one and a time for that long-awaited stroll in the countryside taking a little me time from our busy everyday lives.

Only in spring do we have the opportunity to see and admire the true beauty and diversity of life on earth. Even here right on our doorsteps in Goldsworth Park there is so much more than just houses and roads to look at. Just open your eyes and ears and look around. Birds singing, trees and shrubs blooming, butterflies hovering, bees buzzing – it's all happening out there. Go on take stroll and there is no better place this time of year than round the lake.

Just short of one mile round it's perimeter the lake has become a hive of nature's wonders. Now home to so much diversity of life the lake, dug by Thames Water back in 1970ish as a balancing pool for road run off looking like a dirty hole in the ground, has over the years matured into one of the most stunning urban bodies of water for miles around. From the

car park you are greeted by a view of not only the water but by at this time of year in particular the array of different greens of the trees and marginal plants many of which are on the cusp of coming into bloom not to mention being welcomed by dozens and dozens of ducks, geese, moor hens, coots and gulls all hoping you've come armed with a treat or two.

On the subject of treats however, PLEASE do not feed them with too much bread, never feed them on land and always encourage them to feed on the water as it's so much better for their health and digestion. The best food to feed of all is wild fowl pellets, readily available from garden centres and pet shops. However, you will only be seeing a small percentage of the bird life at that point due to the uncountable numbers of birds nesting on site. If you were to walk round in a clockwise route looking carefully round the margins and low hanging branches you will see nests everywhere or family groups of those who have already hatched including our two pairs of great crested grebe. Please admire by keeping a safe distance and be mindful not to disturb any nesting birds.

As you journey further you will also see our swans have nested. Mum (the pen) has been sitting on the eggs throughout April. Incubation for swans is around 36

Photo: Matt Hunt

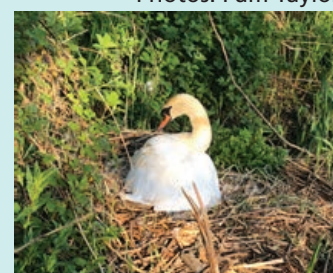
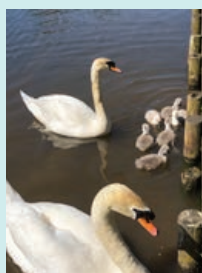


days which took us to about 8th May. Mum and dad now have their work cut out as six successfully hatched. What joy as six eggs have hatched with the family starting to enjoy life on the water.

You may also be lucky enough to see in the margins thousands of tad poll both frog and toad and even great shoals of fish such as bream and roach busy laying their eggs amongst the protruding roots along the water's edge. Perhaps you may spot a kingfisher flash by or a grey heron looking for an easy meal plus swifts, swallows and martins catching fly on the wing over the water. Dragon and damselfly are also just starting to show. The more you look the more you see, as I have said there is just so much to appreciate in nature and no better time than in spring.

ROGER

Photos: Pam Taylor



**Goldsworth Park
Lake and Footpath**



Please be a responsible dog owner

Respect other lake users and wildlife at all times



Thank you

Volunteer GPCA News deliverers sought

Do you fancy volunteering to deliver Goldsworth News to your neighbours?

If so please get in touch with Peter Hill, 01483 835183, peter.hill3@ntlworld.com

The following roads are currently covered by The Editor who would welcome your support to take on delivery to: Bankside, Caradon, Dene Place, Selby, Wyndham Road, Waterside Way, Winnington Way and Foxhills.

Goldsworth News will be delivered to your door by our dedicated volunteer coordinator Peter and will only take a few minutes of your time to deliver. I am sure you will find supporting your local community enjoyable – you could even meet a fellow resident you have not spoken to before.

Goldsworth Park Scout Group



By Akela (Hilary) CUB Leader

1st Goldsworth Park Scout Group 2025 Summer Update

Here comes summer...

All of our sections are looking forward to getting out and about now the better weather is coming. Beavers, Cubs & Scouts will be planning their programmes & events around outdoor activities and helping the community where they can.

We would like to congratulate Maya Newsam (an ex- GWP Scout) on obtaining her Kings Scouts Award, which will be presented at Windsor Castle. Maya joined 1st Goldsworth Park Scout Troop after a time with the Guides and has worked hard to achieve her Kings Scout, she is a great role model for all young people and I am sure will carry on doing well in whatever career she chooses. We will hope to share photos in the next edition.

Sadly, we have to say one of our founder Group members who has passed away after a long battle with Parkinsons. Ivor Evans was in at the start when the Generation Centre was first built, in 1993/4 and his ability to make equipment & games for the Scouts was always impressive. He was what Scouting is all about and many people have lasting memories of happy times spent at Camps and activities. Our thoughts and condolences are with his wife, Chris and their family.

We would welcome anyone who has a few hours to spare that would be interested in helping run the Group as members of the Trustees Board. In particular we are actively seeking a Chairperson and Quarter Master (to look after our equipment).

If you would like to know more about our Group please contact our Group Team Lead Member: Dave Morriss on: gsl.gpark@gmx.com

Akela (Hilary) CUB Leader



Photos: Hilary Harris

Defibrillators saves lives

A life-saving public defibrillator has been installed on the front of St Andrew's Church at Goldsworth Park Centre, thanks to donations by members of the St Andrew's church family. It prompts us to give advice on saving the life of someone suffering from cardiac arrest, writes our reporter, Royer Slater.

Cardiac arrest means a person's heart has stopped beating. A defibrillator is a device to help get the heart beating again. It does this by giving a jolt of energy to the heart. You might also hear it being called a defib, a PAD (public access defibrillator) or an AED (automated external defibrillator).



Photo: Pam Taylor

If you are with someone who is in cardiac arrest, first call 999 and start CPR. If you're on your own, don't interrupt CPR to go and find a defibrillator – if possible, send someone else to find one. When you call 999, the operator can tell you if there's a public access defibrillator nearby.

Anyone can use a defibrillator. You do not need training. When you turn it on, it will give clear step-by-step voice instructions telling you how to use it.

The device checks the person's heart rhythm and will only tell you to give them a shock if it's needed. You can't accidentally give yourself a shock.

The British Heart Foundation explains CPR and defibrillators in more details on its web site: <https://tinyurl.com/defib-use>. Don't wait until you need this advice – look it up now, for you never know when you might need it.

Where are they?

Public access defibrillators are available 24/7 at these locations in Goldsworth Park (according to defibfinder.uk as of May 2025):

- St Andrew's Church, Goldsworth Park Centre, Denton Way, GU21 3LG
- The Salvation Army church, Sythwood, GU21 3EB
- The Dianthus Building, Wishbone Way, GU21 3RT

Defibrillators are also recorded at the following locations and may be available to the public during restricted hours: Waitrose (Goldsworth Park Centre GU21 3LG); Sythwood Primary School (Sythwood GU21 3AX); Beaufort Primary School (KS1 Entrance, Kirkland Avenue GU21 3RG); Screwfix (Goldsworth Park Trading Estate GU21 3BA).

Time for a *Spring* Complete Service with



Motormech



**FREE BRAKE AND
BATTERY CHECK****

MOT TEST £39.00

**COMPLETE
SERVICE***

£179.00

INC. VAT

**STANDARD
SERVICE***

£99.00

INC. VAT

**MOT
TEST**

£39.00

INC. VAT

**COMPLETE
SERVICE &
MOT***

£199.00

INC. VAT

**STANDARD
SERVICE &
MOT***

£119.00

INC. VAT

Our Service Team will be happy to provide you a quotation and make a booking. You can also book online. All makes and models.

* Terms & Conditions apply. We will report to you if the spark plugs require changing.

* We'll collect and deliver your vehicle **Free of charge** within a 5 mile radius of GU2 7YB. The Complete and Standard service offer includes all makes and models up to engine size 2000cc. Additional surcharges will apply for larger engine sizes.

** Free Brake and Battery Check with Complete Service and Complete Service with MOT

Book Online: www.motormechguildford.co.uk

OR CALL: 01483 502671

Unit 1H, Cathedral Hill Industrial Estate, Guildford, Surrey GU2 7YB



News from St Andrew's by Revd Scott Smith

Greetings

In June it will be three-years since I arrived in Goldsworth Park to become Vicar of St Andrew's, in a service where I was paraded around the church like a prize-winner at Cruft's!

You might remember the summer of 2022 was incredibly hot and I believe the temperature in the church upstairs worship space was similar to the surface of the sun!

Three-years on and I can't quite believe where the time has gone. As I write we are still basking in the glow of a tremendous Easter weekend, with an Easter Day service that included confetti cannons.

One of the great joys of becoming Vicar of St Andrew's was that I inherited a large grey filing cabinet full of papers. Amongst them was a booklet called 'St Andrew's: The Early Years', which, as the name implies, is a history of how 'Christians on Goldsworth Park' grew and developed into the church family that continues to meet here in this building week-by-week.

The booklet speaks of the founding vision of St Andrew's Church; the conviction that God called us to:

- Make a significant contribution to the life of Goldsworth Park.
- Be a church with a welcoming face and a worshipping heart.
- Be a church with worship and service as its priorities.

Under the leadership of its Vicars Andy Knowles, Richard Cook, Kate Wyles and now myself, St Andrew's looks to be an outward-focussed church, with a community mind-set that's hard-wired into its DNA.

You'll know too if you glance at the 'Dates for your diary' pages

at the back of this magazine, that there's a lot going on in the life of St Andrew's, much of it community-focused.

For almost all its life, the church has run a café. Its model has changed over the every years and currently called 'Andy's Community Café' (named after St Andrew's).

The commercial landscape within Goldsworth Park itself has changed over the years; other cafes have sprung up and Waitrose offers free drinks. Andy's café manager, Amanda, will be retiring in July. She leaves with our grateful thanks. In the light of her decision, the church is reviewing and reflecting on Andy's Community Café and how the space might be best used to serve the needs of Goldsworth Park into the future.

Everything that St Andrew's church does is financed by money given by the church family. Our reality is that we currently don't have enough money each month to pay for everything we do. Therefore, there is also a need for us to review how our finances are spent, what they are spent on and whether we are using them in the best way we can in order to serve and meet the needs of the community around us.

Whilst no decisions have yet been taken, be assured that St Andrew's will always look to its founding vision to be a church that seeks to make a significant contribution to the life of Goldsworth Park, as well as being a church with a welcoming face, a worshipping heart, a church that has service as a key priority.

With those priorities in mind, on Saturday 28th June St Andrew's (with Goldsworth Park Community Association and the Girl Guides) are delighted to be again partnering to host the Goldsworth Park Summer Fair. We're obviously hoping and praying for a gloriously sunny day so that we can enjoy rides, live music, stalls and performances from local schools and dance groups. Do put the date in your diary – I'd love to see you there.

Finally, as I say each time, I'm not just here for the church family that gathers week-by-week but for all who call Goldsworth Park home: every single person, whether you used to come to church, have never come, go elsewhere or have no intention of ever coming.

Alongside (and outside of) Sundays, there's always plenty going on at St Andrew's week-by-week: please see the diary dates in the back of this magazine and also our website www.standrewsgwp.org for more information about such things as our Toddler and Baby groups, Messy Church, Hymns We Love, our Community Cafe and much more.

With every blessing for the Summer.

Scott



TFM FENCING & LANDSCAPES

All Aspects of Fencing & Landscapes



For FREE Quotes & Estimates call Florin

07503 964675

- Fencing • Patios • Decking • Planters • Brickwork
- Driveways • Garden Buildings • Groundwork • And many more

One of Jacksons Fencing approved installers

Serving Surrey and surrounding areas

Rated 5 stars by our customers delivering a top notch job quality



tfmfencing@gmail.com

www.tfmfencing.com



STEVE A HANDYMAN / BUILDER

No Job Too Small.....

Property & Garden Maintenance - Including but not limited to:

Paving – Fencing – Drainage - Tiling - Painting & Decorating

Contact for a free quote

Telephone 01276 856716, Mobile 07717 455826

anscomb582@btinternet.com

Lakeview Community Centre

By James Sanderson, Chair, Lakeview Community Action Group



Lakeview Fun Day

We are planning another Summer Fun Day in Lakeview after the successful events for the last couple of years. This year it will be held on Saturday 19th July, 11am to 4pm, and there will be a similar mix of events and activities as prior years. We had a great turnout from the local community previously and we are hoping for something similar this time around.

There should be plenty to do for all the family including a bouncy castle, lots of different stalls offering a wide range of activities and goods, live music, dance performances and several places to eat and drink. We will have live entertainment provided by local bands and we hope to have a number of dance performances. The bouncy castle has been a great hit in prior years with younger kids and has proved very popular.

It will also be an opportunity for local charities and community groups to publicise their activities and raise much needed funds. Last year we had groups such as Woking Youth, Young Carers and Lift Up Together.

We plan to run another Grand Prize Raffle to raise funds for the local community. We will reach out to local businesses to donate prizes for the Raffle, we had a very generous response last year.

It is not too late to sign up for a stall on the day. We are also looking for volunteers to help in particular to set up beforehand and clear away afterwards, help run stalls such as the bouncy castle, and to act as stewards. If you would like to book a stall or can help volunteer then please contact us at admin@lakeviewcentrewoking.org.uk

All in all we hope the Lakeview Community Fun Day will be another opportunity to showcase the diversity and vitality of Lakeview and Goldsworth Park and bring local people together for a day of fun and friendship.

Do you care for someone with a memory issue or dementia?

Exciting news for Goldsworth Park residents! Free training sessions are coming to your area, designed to help you provide the best possible care at home, ensuring your loved one lives safely and well.

Delivered by Surrey County Council and designed by carers, this training is part of the joint dementia strategy to improve the lives of Surrey residents with dementia. It aims to support independence and quality of life, focusing on prevention, diagnosis, community support, and end-of-life care. With over 17,000 people living with dementia in Surrey, this training is crucial.

These sessions will cover up to nine essential topics, including:

- Understanding dementia
- Nutrition and hydration
- Preventing falls
- Managing concerning behaviours
- Coping strategies and wellbeing
- Advanced dementia care
- Financial support
- Promoting dignity and independence during personal care

These sessions are not just about equipping you with practical skills and knowledge. They also offer a chance to connect and share experiences with others who care for loved ones with similar conditions. Additionally, you'll receive guidance on other sources of support.

While current sessions are available in Guildford and Milford, Surrey County Council are planning to bring the next sessions to Goldsworth Park. They will be held at a local community venue and will be spread over several sessions.

To register your interest, you can:

Email: communitiesandpreventionprojects@surreycc.gov.uk

Call: 0300 200 1005

Text: 07527 182 861 (for the deaf or hard of hearing)

For more info visit www.healthysurrey.org.uk/community-health/dementia-care-training

SUPER SUMMER OFFERS

at your local independent retailer

Price Match Guarantee | Super Service | Expert Knowledge

BOSCH

**1400 Spin
8kg
Washing
Machine**

WGE03408GB



- 14 progs. incl. quick wash
- SpeedPerfect, ActiveWater
- Add laundry feature, delay timer
- H84.5 x W59.8 x D58.8cm

Only

£429.00 | 2 Year Warranty
A Energy Rating

BOSCH

**1400 Spin
10kg
Washing
Machine**

WGG254Z0GB



- 20 progs incl. quick wash
- SpeedPerfect, anti-stain system
- Add laundry feature, delay timer
- H84.5 x W59.8 x D58.8cm

Only

£649.00 | 5 Year Warranty
A Energy Rating

RSM
Domestic Appliances
FRIENDLY SERVICE • BIG SAVINGS • FAST DELIVERY

YOUR LOCAL SUPERSTORE
1-2 Albion Parade, High St,
Knaphill, Woking GU21 2PS
Call 01483 475000
rsmdomesticappliances.com

**MORE
GREAT
OFFERS
IN-STORE**

Terms and conditions apply. Some products sold as an agent for Euronics Limited. All rights reserved. Offers are subject to availability while stocks last. Delivery and installation charges may apply. Exclusions and radius apply. See in store for full details. Images for illustration purposes only. Copyright Euronics 2025.

Dates for your diary



Regular Events

**Events marked with an asterisk, and possibly others too, may take a break during school holidays. We recommend checking with the organisers.*

■ **WARM WELCOME Tuesdays, drop in 9am–midday** | Friendly chat and company on in Andy's Community Café at Goldsworth Park Centre. Free entry and with free tea, coffee and biscuits.

■ **COFFEE AND CHAT First, third and fifth Tuesdays of each month, drop in 10.30am–midday** | Conversation and company at **Warm Welcome** in Andy's at Goldsworth Park Centre. Church pastoral assistants are available to offer support to those struggling in any way.

■ **TODDLER GROUPS Mondays and Wednesdays, drop in 10am–11.30am*** | With toys and ride-ons, crafts and singing. Run by St Andrew's Church during school term times, in A2 Youth & Community Centre (next to the church). These are drop-in groups but entry may have to be restricted if max number is reached. Optional donation £2 per family. Details: email toddlers@standrewsgwp.org

■ **BUMP & BEYOND Fridays, drop in 10am–11.30am** | Relaxed group for parents-to-be and parents with babies not yet walking. Offers support and opportunities to make friends and share experiences. Fun for babies with toys and activities. Run by St Andrew's Church in Andy's Café (or the A2 Centre if there is an event in the church). Optional donation £1 per family. Details: email bumpandbeyond@standrewsgwp.org

■ **SING GOLD Wednesdays, 2pm to 3.30pm** | Goldsworth Park's Community Choir meets to have fun singing songs of all kinds in the Chapel at St Andrew's Church, GP Centre.

■ **WOKING YOUTH Wednesdays, 6.30pm–8.30pm** | Drop-in for young people aged 11–19 in Lakeview Community Centre, Tracious Close. See www.wokingyouth.org.uk for details. Volunteers needed to help at sessions: for info please email admin@wokingyouth.org.uk

■ **YOUTH EVENING Alternate Fridays, 7.30pm–9pm*** | For young people aged 11–16, with games and activities, and a termly trip out. Run by St Andrew's Church in the A2 Youth & Community Centre at GP Centre. For information and dates email youth@standrewsgwp.org.

■ **LIFT UP TOGETHER Thursdays, 12pm–3.30pm** | Social self-support group aiming to destigmatise mental health issues in a safe environment. With lunch, newspapers and magazines and activities such as bingo, quizzes and games, in Lakeview Community Centre, Tracious Close.

■ **ANDY'S COMMUNITY CAFÉ Wednesdays and Thursdays, 10am–2.30pm (during term times)** | Offers a range of superb barista coffees, teas and snacks and a "pay as you feel" menu: no fixed prices – just pay what you can afford (or nothing if you're feeling the pinch), so no one goes hungry. Toddler-friendly play space with train track, books and toys, free Wi-Fi, comfy sofas or tables to work from, dog friendly. Andy's is on the ground floor at St Andrew's Church, GP Centre, GU21 3LG. Details: www.standrewsgwp.org/andys

■ **CRAFT GROUP Thursdays, 10am–11.30am*** | With a variety of craft activities in Andy's Community Café. Materials provided, all FREE.

■ **ART GROUP Thursdays, 1pm–3pm** | Creativity, conversation and coffee. All abilities welcome. Meet and make friends in Andy's Community Café. Materials provided, all FREE. The event does not take place when the leader is away, so it's recommended you check with the St Andrew's Church office on 01483 723879.

■ **BOAT TRIPS ON THE BASINGSTOKE CANAL**

The Basingstoke Canal Society owns two passenger boats providing pleasure trips on the Basingstoke Canal. Kitty operates from Town Wharf in Woking, while *John Pinkerton II* operates from Odiham. For details and bookings visit basingstoke-canal.org.uk/boat-trips

■ **THE LIGHTBOX – Tuesdays to Sundays, times vary (closed Mondays and Bank Holidays)** | Art exhibitions (changed regularly), Woking's Story (museum) plus workshops for adults and for families with young children. For full details of current exhibitions and events visit thelightbox.org.uk or call 01483 737800.

■ **WOKING REPAIR CAFÉ operated by Woking Environment Action (WEAct).** | Volunteers offer free repairs for small electricals/mechanicals, clocks, furniture, toys, garden tools, clothing and textiles. Donations welcome to cover costs. Only items that can be carried by one person will be accepted. No petrol-driven items for safety reasons. Open from 10am to 12.30pm monthly on Saturdays as follows: **14th June** at Andy's Community Café, St Andrew's Church, Goldsworth Park GU21 3LG; **12th July** at St Mary's Community Centre Byfleet KT14 7LZ; **9th August** at Old Woking Community Centre GU22 9AT; **13th September** at Trinity Methodist Church GU21 4LH. If possible, email beforehand with details of what you wish to bring: wokingrepaircafe@gmail.com.

Diary Dates

February

■ **WEDNESDAY 4 JUNE Hearing aid clinic: drop in from 1pm–3pm** | NHS hearing aid general maintenance including cleaning retubing, general advice and free NHS batteries. St Andrew's Church, GP Centre. Free service run by NHS-trained volunteers. For details visit www.standrewsgwp.org/hearing

■ **FRIDAY 6 JUNE Trefoil Guild, 7.30pm–9.30pm** | Monthly meeting for current and past Guiders who enjoy meeting like-minded folk. The Generation Centre, GP Centre, Denton Way.

■ **SATURDAY 7 JUNE Woking Borough Council Councillors Surgery 11am–12pm** | Meet your local councillors and your MP Will Forster in Quackers Café, Wishbone Way, Woking GU21 3RT.

■ **SATURDAY 7 JUNE Andy's 'Out of Hours', 7.30pm–10pm** | Live music and entertainment in the comfort of Andy's Community Cafe, with licensed bar and food. Tickets FREE (donations accepted) but book here: tinyurl.com/andysooh

■ **SUNDAY 8 JUNE Cake Sale, 10.00am–2pm** | Fundraising event for Goldsworth Guiding. Generation Centre, Goldsworth Park.

■ **SUNDAY 8 JUNE Dragon Boat Races and Family Fun Day, 9.50am–4pm** | Annual fundraising event for Woking & Sam Beare Hospice and Wellbeing Care. Races on Goldsworth Park Lake and family fun on the lakeside, with face painting, plant sale, tombola, children's games and activities, barbecue and refreshments. Free entry. For details, including how to register a Dragon Race team, visit wsbh.org.uk

■ **TUESDAY 10 JUNE Sacred Songs: "Morning Has Broken" 11am** | We'll sing this popular hymn, explore the story behind it and the meaning behind the words. There will also be time to chat. St Andrew's Church, GP Centre. For more information or to express an interest, email community@standrewsgwp.org or call the church office on 01483 723879.

■ **SATURDAY 14 JUNE Repair Café, 10am–12.30pm** | At Andy's Community Café in St Andrew's Church. See details under "Regular events" (above).

■ **SUNDAY 22 JUNE Messy Church, 3pm–5pm** | Join us for fun, crafts, games, songs and food. Aimed at families with children aged 4–10 (primary school age), but older/younger siblings are welcome. St Andrew's Church, GP Centre.

■ **MONDAY 23 JUNE Seniors' Event, 1pm–3pm** | Ploughman's lunch. Free (donations accepted). Guest speaker to be announced. In Andy's Community Café (within St Andrew's Church). Booking essential: please call 01483 727834 or email pastoral@standrewsgwp.org

■ **SATURDAY 28 JUNE Goldsworth Park Summer Fair 10am–3pm** | Games, fairground rides, entertainment, food, market stalls, local charities and more. In and around the Church and the Generation Centre at Goldsworth Park Centre. Hosted by St Andrew's Church in partnership with Goldsworth Park Guides, and supported by the GPCA. Free entry.

July

■ **WEDNESDAY 2 JULY Hearing aid clinic: drop in from 1pm-3pm** | NHS hearing aid general maintenance including cleaning retubing, general advice and free NHS batteries. St Andrew's Church, GP Centre. Free service run by NHS-trained volunteers. For details visit www.standrewsgwp.org/hearing

■ **FRIDAY 4 JULY Trefoil Guild, 7.30pm-9.30pm** | Monthly meeting for current and past Guiders who enjoy meeting like-minded folk. The Generation Centre, GP Centre, Denton Way.

■ **SATURDAY 5 JULY Woking Borough Council Councillors Surgery 11am-12pm** | Meet your local councillors and your MP Will Forster in Quackers Café, Wishbone Way, Woking GU21 3RT.

■ **TUESDAY 8 JULY Sacred Songs 11am** | We'll sing a hymn or sacred song, explore the story behind it and the meaning behind the words. There will also be time to chat. St Andrew's Church, GP Centre. For more info email community@standrewsgwp.org or call the church office on 01483 723879.

■ **SATURDAY 19 JULY Lakeview Summer Fair 11am-4pm** | A great day out with lots of fun for all the family at Lakeview Community Centre and Hartshill Walk Green. Free entry. Including live music, BBQ, bouncy castle, food and drink, ice cream van, raffle, tombola, craft and information stalls. Organised by Lakeview Community Action Group.

August

■ **FRIDAY 1 AUGUST Trefoil Guild, 7.30pm-9.30pm** | Monthly meeting for current and past Guiders who enjoy meeting like-minded folk. The Generation Centre, GP Centre, Denton Way.

■ **SATURDAY 2 AUGUST Woking Borough Council Councillors Surgery 11am-12pm** | Meet your local councillors and your MP Will Forster in Quackers Café, Wishbone Way, Woking GU21 3RT.

■ **SATURDAY 2 AUGUST Andy's 'Out of Hours', 7.30pm-10pm** | Live music and entertainment in the comfort of Andy's Community Cafe, with licensed bar and food. Tickets FREE (donations accepted) but book here: tinyurl.com/andysooh

■ **WEDNESDAY 6 AUGUST Hearing aid clinic: drop in from 1pm-3pm** | NHS hearing aid general maintenance including cleaning retubing, general advice and free NHS batteries. St Andrew's Church, GP Centre. Free service run by NHS-trained volunteers. For details visit www.standrewsgwp.org/hearing

■ **WEDNESDAY 13 AUGUST Seniors' Event, 2pm** | We will be showing a feature film at St Andrew's Church – title to be advised – with ice creams in the interval. Free (donations accepted). Booking essential: please call 01483 727834 or email pastoral@standrewsgwp.org

September

■ **WEDNESDAY 3 SEPTEMBER Hearing aid clinic: drop in from 1pm-3pm** | NHS hearing aid general maintenance including cleaning retubing, general advice and free NHS batteries. St Andrew's Church, GP Centre. Free service run by NHS-trained volunteers. For details visit www.standrewsgwp.org/hearing

■ **FRIDAY 5 SEPTEMBER Trefoil Guild, 7.30pm-9.30pm** | Monthly meeting for current and past Guiders who enjoy meeting like-minded folk. The Generation Centre, GP Centre, Denton Way.

■ **SATURDAY 6 SEPTEMBER Woking Borough Council Councillors Surgery 11am-12pm** | Meet your local councillors and your MP Will Forster in Quackers Café, Wishbone Way, Woking GU21 3RT.

■ **SUNDAY 21 SEPTEMBER Messy Church, 3pm-5pm** | Join us for fun, crafts, games, songs and food. Aimed at families with children aged 4-10 (primary school age), but older/younger siblings are welcome). St Andrew's Church, GP Centre.

Local Organisations in Goldsworth Park

■ GOLDSWORTH PARK GUIDES AND SCOUTS

Meetings are in The Generation Centre at The Goldsworth Park Community & Shopping Centre.

GUIDES: Rainbows (ages 5-7) – Monday, Tuesday and Friday 4.45pm to 5.45pm; Brownies (ages 7-10) – Monday Tuesday and Friday 6pm to 7.30pm; Guides (ages 10+) – Tuesday 7.45pm to 9.15pm. **Contact:** Hannah Lambart on 01483 766001 or email gpbrownies4@hotmail.co.uk

SCOUTS: Beavers (ages 6-8) – Wednesday 5pm to 6pm; Cubs (ages 8-10) – Thursday 5.45pm to 7.15pm; Scouts (ages 10+) – Thursday 7.30pm to 9.00pm. **Contact:** Dave Morris on 07985 684086 or email gsl.gpark@gmx.com. Dave says the group needs extra leaders or helpers so they can accommodate young people on the waiting list: can you help?

■ GOLDSWORTH PARK RANGERS FOOTBALL CLUB

Grassroots football opportunities for boys and girls, based at Goldsworth Park Recreation Ground. Details: visit gprfc.org or email clubsecretary@gprfc.org

■ SEA CADETS WOKING

Through activities and adventures, we learn teamwork, respect, loyalty, self-confidence, commitment, self-discipline, honesty and how to be the best version of ourselves. We meet at the Dianthus Building, Wishbone Way GU21 3RT. Sea Cadets (ages 12-18) – Mondays and Thursdays 7pm-9pm; Junior Cadets (ages 10-12) – Mondays 7pm-9pm; Royal Marines Cadets (13-18) – Mondays and Thursdays 7pm-9pm. Details: visit www.sea-cadets.org/woking or email info@wokingseacadets.org.uk or call 01483 901909.

■ WOKING HOCKEY CLUB

With many teams (men's, ladies, mixed, youth and touring sides), plus "back to hockey" sessions, the clubs offer hockey to players of any ability. Details: www.wokinghc.com or email secretary@wokinghc.com

■ GOLDSWORTH PARK BADMINTON CLUB

The club seeks new members who currently play or are thinking of restarting badminton. Meets in Woking High School Sports Hall on Saturdays 1pm-3pm. The club has a friendly but strong level of badminton using feather shuttles whilst enjoying the fun and social side. Details email paulrussell01@aol.com

■ FOSTERS BADMINTON CLUB

A mixed, friendly and competitive club for those looking for competitive badminton. The clubs plays with feather shuttles and has men's and mixed league teams. Meets in Woking High School Sports Centre on Monday evenings 7pm to 9 pm. Details email dave@daveglynnmanagement.co.uk

■ ST ANDREW'S CHURCH

Goldsworth Park's friendly, community-focussed parish church, at the heart of Goldsworth Park near the shops. Our church family is made up of all ages and backgrounds from a variety of nationalities and cultures. We'd love to welcome you at a Sunday service in our upstairs Worship Area (we have a lift!) or during the week at our many events downstairs in Andy's Community Café. Details: www.standrewsgwp.org email office@standrewsgwp.org or call 01483 723879.

■ SALVATION ARMY

We invite you to join with us on Sundays at 11am for our worship meeting. In addition, we offer many programmes at our Community Church throughout the week so please know that you're welcome at The Salvation Army Community Church, Sythwood, Woking GU21 3BE. For details visit www.salvationarmy.org.uk/woking or email woking@salvationarmy.org.uk or call 01483 793704.

■ LAKESIDE CHRISTIAN FELLOWSHIP

Meets Sundays at 10am for worship, teaching and Holy Communion in the Dianthus Building in Wishbone Way, GU21 3RT. Other meetings during the week include Holy Communion, prayer and house groups. For more information visit lcfwoking.wixsite.com/lakeside or email lcf_woking@hotmail.co.uk or call 01483 870045.

■ RADIO SAILING WOKING

We sail model boats on Goldsworth Park Lake on Sundays from 11am (weather permitting), sometimes Wednesday and Fridays, plus competitive meetings (listed on web site). During the other "free" weekends we are more able to answer public questions and let people have a go. Although primarily a sailing group the club is open to models of all types, excluding fast electric and steam. For details see www.rudiosailingwoking.uk

■ GOLDSWORTH CARE

A good neighbour scheme offering help to residents who find it difficult to get around. Volunteer drivers take clients to health centres, shops etc and wait to take them home again. They may also do shopping for housebound people. For details, registration and to request a pick-up call 07751 801587, Monday-Friday, 10am-12 noon.

■ WOKING SHOPMOBILITY

Hires out mobility scooters, power chairs and manual wheelchairs to help access Woking town centre shops and amenities. Also rents out manual wheelchairs and travel scooters for holidays and day trips. Blue Badge not necessary. Details: call 01483 776612, visit wokingshopmobility.co.uk or email wokingshopmobility@gmail.com

WE ARE GIVING YOU THE CHANCE TO WIN A **£10,000** HOLIDAY



WHAT'S YOUR DREAM HOLIDAY?

In 2025, Seymours is offering an incredible opportunity to win a £10,000 holiday voucher or one of 20 weekend getaways! To enter, simply instruct your home for sale or rent with Seymours.*

Contact us today for free, no-obligation advice, or scan the QR code to book a in-person valuation.

*TERMS AND CONDITIONS APPLY

BOOST YOUR CHANCES TO WIN

Refer a friend or family member to Seymours, and if they instruct us to sell or let their property, you'll receive an extra entry into the giveaway!*

The more referrals, the more chances to win!



Zo Khan
Partner



Brett Foulser
Sales Director



Seymours