

GOLDSWORTH NEWS

September 2025 – Issue 193

Inside:

- GPCA upcoming events – p3
- Natural Goldsworth Park – p4
- Dates for your diary – ps10&11

GPCA
Goldsworth Park
Community Association CIO
www.ourgoldsworthpark.org.uk

Autumn edition



Photos: Pam Taylor.

SALES, SUPPORT AND ADVICE FROM YOUR LOCAL EXPERTS

WE'RE HERE TO HELP YOU

At RSM, we offer a fast and friendly repair service for most domestic appliances, delivered by fully qualified engineers. Take advantage of our fixed price call outs and labour charges.*

*Plus parts and VAT



GREAT
OFFERS
IN-STORE

WITH
euronics
COMPETITIVE
PRICES

Hotpoint



BOSCH

STOVES

beko

ZANUSSI

Indesit

Lec



EFF

RSM
Domestic Appliances
FRIENDLY SERVICE • BIG SAVINGS • FAST DELIVERY

**SUPPORT YOUR LOCAL
HIGH STREET!**

Showrooms in Knaphill,
Guildford, Ashted
and Epsom Downs

Call 01483 539531

Buy online at
rsmdomesticappliances.com



Do you need an Angel in your life?

Exceptional home care visits from exceptional carers

Most people in need of care would prefer to stay in their own home. Our home care visiting service is carefully tailored to suit you or your loved ones needs. We can help people to retain their independence and stay connected to friends, relatives and pets, safe in their own home where they want to be.

Our caregivers are carefully selected. We find excellent people with the right mix of skills, experience and a true caring nature, so that they can provide consistently superior home care.

We can help with activities ranging from shopping and companionship, to personal care, hospital discharge support and end of life care.

We can visit from one hour each week to every day, for as long as you need us to help with:

- Companion & Social Care
- Personal Care
- Dementia & Alzheimer's Care
- Post-Hospital Stay Care
- Palliative
- End of Life Care
- Live-in Care
- Overnight Care



Find out more about how a Visiting Angel can help

Call 01483 931 934

www.visiting-angels.co.uk/centralsurrey/
CentralSurrey@visiting-angels.co.uk
 Guildford, Woking, and Surrey Heath Boroughs.

VisitingAngels
 QUALITY AT HOME CARE

we're hiring!



Modern Apprentice & Level 2+ Nursery Nurse positions available!

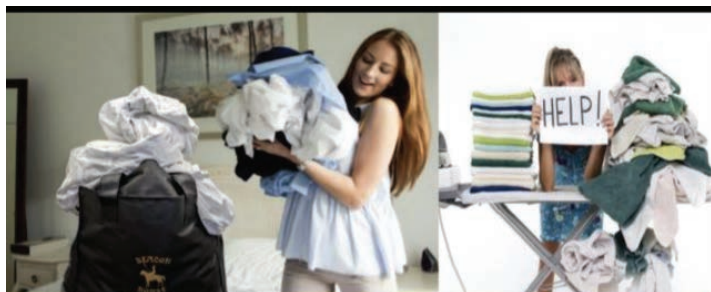
Opportunities to join our friendly team on a full time, part time or supply basis.

Scan the QR code or email recruitment@toadhall-nursery.co.uk



Goldwater Lodge, Wishbone Way, Woking, GU21 3RT

Toad Hall
 Children's Nursery



20% Discount

Off Your Dry Cleaning Bill
 applied the third time you use our service in a month, as a little "Thank You" from us,
T&C's apply - Offer valid until: End of Month

Beacon House Dry Cleaners

7 Goldsworth Park Shopping Centre, Woking, Surrey, GU21 3LG (Opp. Waitrose)

01483 77 21 24

bhfcsystem@yahoo.co.uk

info@beaconhousedrycleaners.co.uk www.beaconhousedrycleaners.co.uk



PENNY & HAYTER
OPTICIANS



- Independent Opticians
- Personalized service
- Warm & friendly approach
- Highest standards of eyecare
- Latest equipment
- A wide selection of frames, glasses lenses and contact lenses

To start your eye care journey, call Penny & Hayter Opticians on 01483 475205, or visit: www.pennyandhayter.co.uk

3 Albion Parade, High Street, Knaphill
 Woking, Surrey, GU21 2PS
info@pennyandhayter.co.uk



LE DRAIG
ELECTRICAL/PROPERTY SERVICES LTD
Checkatrade
Where reputation matters

Electrical contractors & property maintenance services:

- inspection & testing • fault finding
- consumer unit changed • lighting & power

07799 098 200 / 01483 730 305



www.ledraigelectrical.co.uk



GOLDSWORTH NEWS

GOLDSWORTH NEWS is the magazine of the Goldsworth Park Community Association CIO and is distributed free to approximately 5,000 homes and organisations throughout Goldsworth Park and the surrounding area.

EDITORIAL TEAM:

**Chris Taylor (Editor)
and Royer Slater.**

editor@ourgoldsworthpark.org.uk

Published by the
Goldsworth Park Community Association CIO

Designed and printed by Knaphill Print

ADVERTISE IN GOLDSWORTH NEWS

Contact:

editor@ourgoldsworthpark.org.uk

DISTRIBUTION

Peter Hill

Tel: 01483 835183

Email: peter.hill3@ntlworld.com

If you would like to provide an article for the next edition please contact the editor by 6th November 2025. The copy date for articles and "Diary Dates" entries is Monday 17th November 2025.

Email: editor@ourgoldsworthpark.org.uk

GPCA CIO MEETINGS

Next public meeting 19th November 2025
AGM 7.00pm The Lodge Goldsworth Park.

Membership of the GPCA is required to receive details of forthcoming meetings.

Contact community@ourgoldsworthpark.org.uk for information on how to join.

LOCAL COUNCILLORS

Ann-Marie Barker WBC (Lib Dem)

Martin Sullivan WBC (Lib Dem)

Stephen Oades WBC (Lib Dem)

Lance Spencer SCC (Lib Dem)

Saj Hussain SCC (Conservative)

DISCLAIMER

No responsibility for the quality of goods or services advertised in this magazine can be accepted by the publishers, designers or printers. Advertisements are included in good faith.

No part of this magazine may be reproduced in any form without the express prior permission of the publishers.

The publishers do not necessarily agree with the views expressed by contributors nor do they accept any responsibility for errors of interpretation in the subject matter of this magazine.

All reasonable care is taken to ensure accuracy in preparation of the magazine but neither the publisher nor printer can be held legally responsible for the return of unsolicited manuscripts, art work or projects. Whilst every care is taken, no responsibility can be accepted for the safety of material submitted.



Please read and recycle

Views from a Trustee

What a beautiful summer we have had compared to previous years! I hope that you have been able to get out and about around the lake and enjoy taking in the beauty of nature and wildlife that we are fortunate to have in our neighbourhood.

On that note, the GPCA are pleased to welcome back Bob Challoner as Natural Goldsworth Park Project Manager to continue the work of promoting conservation of the Meadow and woodland as natural habitats. Do take a look at his article with some amazing wildlife photos. I would also encourage you to join the Natural Goldsworth Park Facebook group if you haven't already – you will find more great photos there! Thank you to all those who contribute to the group – I know I speak for all the members when I say we thoroughly enjoy seeing the beautiful images you manage to capture.

Our recent litter pick was a quieter one, but we are pleased to report that we found very little litter around, so thank you to everyone for your efforts in helping keep the area clean. Our next litter pick will be on Saturday 25th October at 2pm – do join us if you can.

The date for our next AGM is Wednesday 19th November. Please join us at the Lodge from 7pm for a short meeting followed by drinks and nibbles.

Dueyna

If you would like to be involved with the work of the GPCA please contact the GPCA Community Officer on **community@ourgoldsworthpark.org.uk**



@ourgpca



facebook.com/groups/goldsworthpark

www.ourgoldsworthpark.org.uk

Community Litter Pick – Sponsored by



THE GPCA's next community litter pick is on Saturday 25th October, meeting at The Lodge car park, Wishbone Way at 2pm. Litter pickers, bags and high-vis safety vests are all provided. All welcome, but children must be accompanied by an adult. Hope to see you there. Any questions please contact **editor@ourgoldsworthpark.org.uk**

GPCA Open Meeting

The next GPCA Open Meeting is the AGM which will be held on Wednesday 19th November 7.00pm The Lodge, Wishbone Way, Goldsworth Park. All residents are welcome, but if you are a registered member you are entitled to vote on the appointment of trustees (the GPCA would welcome new trustees) and any other issue needed to be resolved by a show of hands. As a member you will also receive by email notice of meetings and other news. It is free to join, so if you would like to register email Bob at **community@ourgoldsworthpark.org.uk**

Don't feed bread at the lake!

Please spread the word that bread shouldn't be fed to wildfowl including ducks, geese and swans. What may seem to be kindness may harm or possibly kill them, especially their young. Bread is a processed food with very poor nutritional value for wildfowl, but it fills them up, so they fail to forage for the healthy foods they need and can find for themselves.

It's possible some of the many unexplained cygnet and duckling deaths at Goldsworth Park Lake each summer may be because the young birds lacked the natural nutrients they needed to survive, having been fed lots of bread. In addition, too much bread can cause a condition in ducks called "angel wing" which causes bones to twist during growth and inhibits flight.

Another reason to discourage feeding bread at Goldsworth Park Lake is that much more bread is scattered there than the wildfowl will eat. The leftovers are thought to be a reason for a significant rat problem on the lakeside – and these rodents can be predators of young birds.

By all means feed wildfowl with sweetcorn, lettuce, oats and seeds, which are good for them, but never with bread!

Please mention Goldsworth News when responding to advertisers in this edition.

Editor's jottings

Hello and welcome to the Autumn edition of Goldsworth News. I hope you have been enjoying the wonderful weather. The GPCA enjoyed supporting a number of events over the last few weeks starting with volunteers manning the tea and cake stall for the Woking & Sam Beare Dragon Boat Racing in early June. This was followed in late June when the GPCA funded the fairground rides at the Summer Fair held at the Goldsworth Park Centre. The last event supported by the GPCA was funding the bouncy castle at the Lakeview Community Fun Day in July. The GPCA is very happy to support these local events for local people.

However the GPCA would like more members to enable this support to continue. As I write after the GPCA AGM being held in November this year currently there will only be three Trustees which is the minimum requirement. So, I ask "Would you be interested in becoming a Trustee?" Or perhaps becoming a member of the GPCA? If so please contact the GPCA Community Officer on community@ourgoldsworthpark.org.uk for more information.

In this issue you will find a Brockhill site update on page 8 provided by Ann-Marie Barker – thank you Ann-Marie. Some further

details are also available on the Woking BC website.

Also included is information about the Goldsworth Guiding and Scout Scarecrow Trail taking place during the October half term week. Do take a look at the poster on page 6 and see if you can make a scarecrow.

Before I close did you know that electrical waste is on the rise? In a recent message from Woking BC I read that e-waste is the fastest growing waste stream in the UK, and the world. Electrical and electronic items are anything with wires, plugs or that use batteries.

To help the environment you can recycle your small electrical items by putting them into a standard size plastic carrier bag, tied up so that they keep dry and leaving them next to your rubbish or recycling bin on your collection day. Put batteries in a separate bag, such as a clear plastic sandwich bag. Please don't put them in your rubbish or recycling bins as they are hazardous.

Most can be recycled but there are a few items which cannot including items too big to fit into a small plastic carrier bag, low energy light bulbs and car batteries. You can find out more from Surrey Environment Partnership.

Goldsworth Lake

A poem by a visitor from India – Lakshmi Venkatachalam

A lake that is worth its name in gold,
That shines and sparkles on a summer noon,
That mirrors fleeting clouds
On a clear blue sky, in its liquid gaze.

With a trail that ribbons around it
Where men and women,
Girls and boys,
Kids and youth,
Seniors in teams or alone,
Trace their paths in walks or jogs,
On summer eves and winter noons.

A trail that breaks into narrow strips of path,
Winding to the city's roads,
With blooms of every hue,
In backyards chanting their unique tales,
Wooded greens,

Where feather'd friends
Rest in nests or rise to fly,
With their trills and tweets,
Squirrels scampering,
Along the sides.

A lake that smiles in joy
As we spend in fun and frolic on her banks
On pleasant summer days .
On the lake, I spy,
Silver streaks of bubbling ripples,
As the ducks quack and web their way
In rows one behind the other
Or swim in joyous disarray.

Summer hats and fleece jackets,
Here and there,
Motionless, at the lakeside,

With a line, hook and bait,
Till a fish is lifted up,
Shining from its watery dwelling place.
On rainy days, sheets of water dash down
To form glistening ripples spreading circles.

A definite point in the fluid span of space,
The lake is a liquid orb of wonder,
Built to add splendour,
To the well knit group of shelters
where men and women stay together.

A clear scene on a bright Summer day
Grey shades on a winter's dismal day.

The lake and its beauty'etched in my mind
That bring a sense of serene calm
To my tired, fretted mind.

Goldsworth Park Girlguiding



It has been an exciting few months Girlguiding on the Park. The girls have taken part in a number of events in the area including sleepovers, festivals and canoeing. One of the festivals was an all day event for Brownies throughout Surrey held in Guildford called Festival Friendship. The Brownies took part in craft, dancing, bouncy castles, drumming, obstacle course to name but a few. A great time was had by all.

Fundraising is part of life and in recent weeks included a cake sale, a number of stalls at the Goldsworth Park fair plus the ever-popular silent discos. Thank you to all who took part and support these events.

A taster event for potential Rainbows and Brownies was held on the 26th July at The Generation Centre. The event was hugely successful attracting a number of potential new members. If you were



unable to attend and are considering joining Rainbows (ages 4-7) or Brownies (7-10) and would like a taster session do get in touch: gpbrownies4@hotmail.co.uk

The next few months will include all the Girlguiding activities taking place at the weekly meetings plus sing-a-long movie evenings, preparing for the Christmas Fair (29th November) plus the opportunity to take part in Christmas Shows. Perhaps the most exciting event is the Goldsworth Girlguiding and Scouts Scarecrow Trail which takes place during the Autumn half term (25th-29th October). You are all invited to make and display in your front garden or window a scarecrow. Please see the poster for more details.

Natural Goldsworth Park Update



NGP's Project Manager, Bob Challoner, writes:

Natural Goldsworth Park (NGP) was established by the GPCA in 2016 to promote conservation of the Meadow and woodland as natural habitats. It was in response to a proposal by Woking Borough Council to build new junior football pitches on the Meadow. This met considerable resistance from residents concerned about the noise disturbance and increased traffic and parking on local roads. Many other residents and non-residents objected to the loss of the only sizeable natural habitat left in Goldsworth Park. Consequently, the Council deferred any development of the Meadow until its next playing pitch provision review.



That 10-year grace period ends in 2027, at which time Woking Borough Council will have ceased to exist, as the new West Surrey Unitary Authority (incorporating Woking and other existing local councils) will become operational. It is anyone's guess what the new Authority's policies will be for recreation space, sports provision and environmental protection across its much larger geographical area.

In addition, Woking Borough Council has transferred responsibility for the Goldsworth Park pavilion and playing fields to Goldsworth Park Rangers Football Club (GPRFC) under a lease of undisclosed length and terms. It seems the day-to-day management or future development of the facilities is delegated entirely to the Club. GPRFC is an expanding local, well-supported organisation for junior football and it would be surprising if it did not seek to increase the playing field provision on Goldsworth Park in the future.

Both these changes may well put the Meadow's future as a natural habitat in doubt.

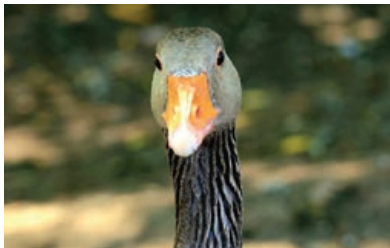
Having just resumed the NGP Project Manager role and, in

anticipation of a worst case arising, I have agreed to work with the GPCA trustees on preparing an argument to support retaining and enhancing the environmental and social amenity values of the Meadow and adjoining woodland as natural habitats. A starting point next year will be updating the plant and wildlife surveys conducted shortly after the Meadow was "saved" in 2016.

My immediate plans are to re-establish any contacts with the landowners and other organisations lost whilst the project manager role was vacant and to follow up on last year's successful GPCA wildflower seeding with more nature conservation-oriented activities and citizens' science projects for residents' participation.

Finally please keep an eye out for people (mainly children) who have been lighting fires in the wood and on the Meadow. Fortunately, the fires were quickly spotted by passers-by and the Fire Brigade attended before they got out of control. The consequences of an uncontrolled fire spreading widely could be disastrous. If you see anyone acting suspiciously or see smoke or a fire please call the Fire Brigade and Police immediately.

Natural Goldsworth Park Facebook Group



Photos: Gillian Vanbiljon

The *Natural Goldsworth Park* Facebook Group goes from strength to strength. Membership now stands at 257 and is growing all the time. The Group provides an opportunity for members to post their photos of the plants and wildlife they see, whether on Goldsworth Park or elsewhere, to ask questions of our experts and comment on all things natural. Everyone with an interest in nature is welcome to join – you do not have to live on Goldsworth Park; indeed, many members live outside the area.



**Goldsworth Park
Lake and Footpath**



Please be a responsible dog owner

Respect other lake users and wildlife at all times



Thank you

Volunteer GPCA News deliverers sought

Do you fancy volunteering to deliver Goldsworth News to your neighbours?

If so please get in touch with Peter Hill, 01483 835183, peter.hill3@ntlworld.com

The following roads are currently covered by The Editor who would welcome your support to take on delivery to: Bankside, Caradon, Dene Place, Selby, Wyndham Road, Waterside Way, Winnington Way, Foxhills, Barden Walk and Venton Close

Goldsworth News will be delivered to your door by our dedicated volunteer coordinator Peter and will only take a few minutes of your time to deliver. I am sure you will find supporting your local community enjoyable – you could even meet a fellow resident you have not spoken to before.

Goldsworth Park Scout Group



By Akela (Hilary) CUB Leader

1st Goldsworth Park Scout Group 2025 Autumn Update

As we all hang up our Uniforms for the summer break we would like to remind the local people of Goldsworth Park and surrounding areas that our building, the Generation Centre & the Baden Powell Room are available to hire out for private bookings. There are a few regular weekday groups that use us and in term time weekday evenings are reserved for the Guides & Scout Units. However we can normally accommodate weekend enquires.

If you are looking for a lovely clean hall, with smaller side room, fully functioning kitchen & toilet facilities then please consider contacting our bookings secretary to check availability and hire fees. Bookings Secretary: Sylvia Lambart 01483 766001

For the observant locals around, you might have noticed we have recently had the paving surrounding the Generation Centre re-laid, due to several of the slabs becoming worn and uneven. We would like to thank our local Surrey County Councillors; Cllr Lance Spencer & Cllr Saj

Hussain, who were able to assist with our grant application to the Your Fund Surrey Small Community Project Fund. Our building is run for and run by the Guides & Scouts of the local area and as such we rely on Community grants to help fund any bigger projects. We would also like to mention Zack Contractors and their Director Jon North for a well-managed project and minimising any disruption to our neighbours.

In the last edition we mentioned that we were looking for a Chairperson & Quarter



Master to come on the Scout Group Board of Trustee and I am pleased to say we have filled the roles, one of which as a direct result of the article in GPCA news. Also as a follow on from the last edition we now have a photo of our Scout Maya Newsam who was awarded her Kings Scout Award back in April at Windsor Castle.

Have a good summer break everyone, we are already planning ahead and looking forward to coming back in September where we will welcome our new 1st Goldsworth Park Squirrel Dray along with a new Woking District Explorer Unit that will be based at the Generation Centre.

Akela (Hilary) CUB Leader

☆euronics
Shop Local
from your independent
electrical retailer



Price Match Guarantee | Super Service | Expert Knowledge

Hotpoint

**1400 Spin
7kg
Washing
Machine**

NSWE7469WSUK



- 16 progs. incl. Eco Programme
- Steam hygiene, rapid option
- Anti-stain tech, 24-hour delay
- H85 x W59.5 x D54cm

Only
£319.99 | 10 Year Parts
A Energy Rating

Hotpoint

**1400 Spin
9kg
Washing
Machine**

NM11948WSAUK



- 15 progs. incl. Quick Wash
- ActiveCare tech, delay timer
- Child lock, range of cycles
- H85 x W59.5 x D60.5cm

Only
£369.99 | 10 Year Parts
A Energy Rating

RSM
Domestic Appliances
FRIENDLY SERVICE • BIG SAVINGS • FAST DELIVERY

YOUR LOCAL SUPERSTORE
1-2 Albion Parade, High Street
Knaphill, Woking GU21 2PS
Also in Guildford, Ashted & Epsom Downs
01483 475000 • rsm domesticappliances.com

MORE
GREAT
OFFERS
IN-STORE

Terms and conditions apply. Sold as an agent of Euronics Limited. All rights reserved.
All offers are subject to availability while stocks last. Delivery and Installation charges may apply.
Exclusions and radius apply. See in store for full details.
Images for illustration purposes only. Copyright Euronics 2025.

Goldsworth Scarecrow Hunt

25th - 29th October
(half term week)

Make A Scarecrow

We are looking for locals to create and display scarecrows for our fun filled trail. Attendees can buy a map and will be able to come along and see your scarecrow.
Submit entries to participate by Friday 26th September

Maps available to buy mid October
<https://forms.gle/zpiTE7aSQxxufbfY9>

Free to Enter

Contact us:
gpbrownies4@hotmail.co.uk

QR Code

MAP

Motormech

Your Local Service and MOT Centre

**MOT
Tests
£39.00**

We aim to help our customers maintain their vehicles and enjoy safe motoring. We provide a friendly, professional and honest customer experience for all makes and models at competitive rates. We operate a collection & delivery service.



**Standard
Service & MOT***
£119 inc. VAT



**Complete
Service & MOT***
£199 inc. VAT



Standard Service*
£99 inc. VAT



Complete Service*
£179 inc. VAT



Book Online: www.motormechguildford.co.uk Or Call: 01483 502671

Unit 1H, Cathedral Hill Industrial Estate, Guildford, Surrey GU2 7YB

Our Service Team will be happy to provide you a quotation and make a booking.

You can also book online. All makes and models.

* Terms & Conditions apply. We will report to you if the spark plugs require changing.

* We'll collect and deliver your vehicle Free of charge within a 5 mile radius of GU2 7YB.

The Complete and Standard service offer includes all makes and models up to engine size 2000cc. Additional surcharges will apply for larger engine sizes.

** Free Brake and Battery Check with Complete Service and Complete Service with MOT



News from St Andrew's by Revd Scott Smith

Greetings

It's been quite a summer, so far.

As I write, we're just past a spell of unseasonably hot weather – a heatwave no less. This follows the extraordinarily hot Summer of 2022. Hot spells and warmer weather are increasingly our new 'normal.'

For a number of years now, St Andrew's has partnered with *A Rocha UK* (arocha.org.uk) a Christian charity which works to protect and restore the natural world as well as equipping Christians and churches in the UK to care for the environment.

Creation Care is something we take seriously at St Andrew's.

One visible expression of this has been the development of our Community Wellbeing Garden. If you've not yet enjoyed it, please do – it really is for the whole community to enjoy and use.

Behind the scenes, for the past year or so, our 'Green Transformation' heating project, which is looking to reduce the effects of climate change by reducing our carbon emissions, has been slowly but surely making progress.

We will soon be starting the transformation of our A2 (Community Hall) building with a plan that includes a new heating source, changing to LED lighting, adding solar panels, batteries and loft insulation and we're very grateful for the generous grant from Surrey County Council that is helping us achieve this goal. This will then leave us with the major challenge to reduce our carbon footprint for the main church building, and this time, I'm asking if you might be able to help.

St Andrew's loves Goldsworth Park and it's why we continually seek to be an outward focussed church – it's one of the reasons why there is always lots going on here.

This next phase of the project – to replace an old and unreliable

gas boiler and achieve net-zero – will also require grant funding, as the costs are beyond the reach of the church family alone.

We are pleased that we have support from The Aviva Community Fund (which aims to create a better future), **and it will 'match-fund' any donations given over the 6 week period 22nd September to 31st October** (up to £250 per person). Much will depend on the success of this fundraising and also grant applications from other organisations.

How you can help:

1. Make a donation

Every donation gets us closer to our goal. Whether it is £25 or £250 each donation will make a difference. Thanks to the AVIVA Community Fund each donation will be match funded, doubling the impact of your contribution (up to £250 per person, £50k in total).

The link is www.avivacommunityfund.co.uk/p/green-transformation

Or you can scan the QR code.



2. Spread the word

Share our project with friends, family and perhaps your workplace. The more people we reach, the more likely we are to succeed.

As mentioned above, the donation window is only open from 22nd September to 31st October.

If you're able to help in any way, do be in touch or donate during the 'window'. Thank you.

In other news, as the autumn term gets underway, so too our church café, Andy's reopens. Following Amanda's retirement, Andy's will now be open on Wednesday and Thursday mornings (10am-12 midday) initially offering a reduced menu (toast, cake and speciality coffees) for sale.

Tuesday activities (our weekly Warm Welcome and fortnightly Coffee & Chat) continue between 9am and 12 midday, as does our monthly Hearing Aid Clinic (Hear Here) which is always the first Wednesday of each month between 1pm and 3pm.

In November, I will again have the privilege of leading the Act of Remembrance outside the Goldsworth Park Medical Centre, as we take a moment to stop, remember and give thanks for all the freedoms we (too often) take for granted, but which were bought at such a heavy price. Do join us at 10:45am on Sunday, November 9th as we stop to remember.

It's a joy to be part of this community, so if you do happen to see me out-and-about, do stop me and say 'Hello'

With every blessing.

Scott



TFM FENCING & LANDSCAPES

All Aspects of Fencing & Landscapes



For FREE Quotes & Estimates call Florin

07503 964675

- Fencing • Patios • Decking • Planters • Brickwork
- Driveways • Garden Buildings • Groundwork • And many more

One of Jacksons Fencing approved installers

Serving Surrey and surrounding areas

Rated 5 stars by our customers delivering a top notch job quality



tfmfencing@gmail.com

www.tfmfencing.com



STEVE A HANDYMAN / BUILDER

No Job Too Small.....

Property & Garden Maintenance - Including but not limited to:

Paving – Fencing – Drainage - Tiling - Painting & Decorating

Contact for a free quote

Telephone 01276 856716, Mobile 07717 455826

anscomb582@btinternet.com

News from Ann-Marie Barker



An update on Brockhill

All former Brockhill residents are now in their new homes and Brockhill was sold to Frontier Estates. Woking Council was clear during the sales process that it wanted the site to continue to be used for accommodation for older and vulnerable residents. Frontier's offer provided the best return (money that will go back into local council homes) and a written intention to develop a new care home facility in line with Woking Council planning policies.

Other offers were received for Brockhill but were not for specialist residential accommodation and so were not taken up. Woking Council has now become aware that Frontier Estates has sold the site on to supermarket chain, Lidl. Frontier's sale to Lidl doesn't change the planning status of the site. Any proposal for development must reflect the council's adopted planning policies, which support the site's retention for specialist residential accommodation.

Other Councillor news – Looking after our local environment

Local councillors are busy supporting residents and dealing with the many day to day issues that arise. Typical queries are on grassy areas that have missed a cut, litter and fly tipping and abandoned vehicles. Your councillors are always happy to help with these issues but if you are online do check out the new, refreshed Woking Council website where you can report any of these matters. Thank you to all that do take the time to make these reports. It all helps to keep Goldsworth Park looking its best.

Local Government Reorganisation – In October government should tell us the make-up of our future new Council. From 2027 Woking will be part of a new larger 'West Surrey' council which could cover our borough along with Waverley, Guildford and Surrey Heath or be an even larger council that would also include Runnymede and Spelthorne. There will be elections to the new council in May 2026 but it will spend the next year setting itself up whilst Woking Council continues to provide local services.

A personal view

Royer Slater



Did you miss your bird friends over the summer? Some nature lovers in Goldsworth Park bemoaning that they hadn't seen as many wild birds lately. In particular they were worried that "their" robins and blackbirds had vanished from their gardens.

I have some answers, having written a newspaper article on the subject a few years ago. And as I'm getting lazier in my old age I can copy sections from what I wrote then.

Firstly, birds may spurn gardens in summer because there's an abundance of grain, berries and fruit in fields and hedgerows – a bounty of natural food for them to feed upon. It's nothing personal – they'll be back to see you when they need top-up food!

Secondly, we may not notice garden birds as much during summer because they go through a summer moult – that is, they shed their old, worn feathers to be replaced with fresh new ones. It happens when birds have finished breeding and also explains why you may see scruffy or unusual looking birds during the summer. Yet while moulting mum and dad may appear tatty, their offspring raised this year look rather natty!

Birds can't fly after they lose their wing feathers during the summer moult. They are also likely to be tired and underweight after raising their young. For these reasons they tend to hide away to escape predators.

In species where the male and female have a different plumage, the moult can erase their differences temporarily. It's particularly noticeable in those species where the males have a brighter and more "showy" plumage, which is replaced temporarily by a plumage that offers better camouflage while they are hiding away.

You may also notice there is less birdsong during the summer. Songbirds (most noticeably robins, blackbirds and thrushes) sing to attract and retain mates and to mark their territories before and during their breeding season. When they have finished breeding their singing decreases: it's no longer necessary and requires much effort and energy which tired birds cannot afford to waste.

In summer you may notice fewer drakes (males) of our most common duck, the mallard – but they haven't gone anywhere! The drakes – identified by their shiny green heads, brown chests and grey bodies – moult their colourful feathers in summer. This is called their eclipse plumage, when they can look much like the hens (females) which are generally a dappled brown colour. Some of the brown ducks you see may be drakes that have temporarily lost their bright colouring.

Ducks moult their flight feathers all at once. For about a month, they can't fly and are very vulnerable to predators. To provide drakes with some camouflage, their

moult starts with the bright body feathers. These are replaced by dowdy brown ones, which is when the drakes can be confused with the hens. After regrowing their flight feathers they go through another moult and the drakes regain their colourful plumage.

These changes are among the many parts of the fascinating annual circle of life in the natural world. Soon our garden birds will be grateful for the food we provide, especially during the winter when they may rely on it to survive and to build them up for their next mating season. In a few months we'll see sign of birds beginning courtship and nest building, and will hear the dawn chorus again in the spring. And so the cycle repeats. Isn't nature wonderful!



Dates for your diary



Regular Events

**Events marked with an asterisk, and possibly others too, may take a break during school holidays. We recommend checking with the organisers.*

■ **WARM WELCOME Tuesdays, drop in 9am-midday** | Friendly chat and company on in Andy's Community Café at Goldsworth Park Centre. Free entry and with free tea, coffee and biscuits.

■ **COFFEE AND CHAT First, third and fifth Tuesdays of each month, drop in 10.30am-midday** | Conversation and company at **Warm Welcome** in Andy's at Goldsworth Park Centre. Church pastoral assistants are available to offer support to those struggling in any way.

■ **TODDLER GROUPS Mondays and Wednesdays, drop in 10am-11.30am*** | With toys and ride-ons, crafts and singing. Run by St Andrew's Church during school term times, in A2 Youth & Community Centre (next to the church). These are drop-in groups but entry may have to be restricted if max number is reached. Optional donation £2 per family. Details: email toddlers@standrewsgwp.org

■ **BUMP & BEYOND Fridays, drop in 10am-11.30am** | Relaxed group for parents-to-be and parents with babies not yet walking. Offers support and opportunities to make friends and share experiences. Fun for babies with toys and activities. Run by St Andrew's Church in Andy's Café (or the A2 Centre if there is an event in the church). Optional donation £1 per family. Details: email bumpandbeyond@standrewsgwp.org

■ **SING GOLD Wednesdays, 2pm to 3.30pm** | Goldsworth Park's Community Choir meets to have fun singing songs of all kinds in the Chapel at St Andrew's Church, GP Centre.

■ **WOKING YOUTH Wednesdays, 6.30pm-8.30pm** | Drop-in for young people aged 11-19 in Lakeview Community Centre, Tracious Close. See www.wokingyouth.org.uk for details. Volunteers needed to help at sessions: for info please email admin@wookingyouth.org.uk

■ **YOUTH EVENING Alternate Fridays, 7.30pm-9pm*** | For young people aged 11-16, with games and activities, and a termly trip out. Run by St Andrew's Church in the A2 Youth & Community Centre at GP Centre. For information and dates email youth@standrewsgwp.org.

■ **LIFT UP TOGETHER Thursdays, 12pm-3.30pm** | Social self-support group aiming to destigmatise mental health issues in a safe environment. With lunch, newspapers and magazines and activities such as bingo, quizzes and games, in Lakeview Community Centre, Tracious Close.

■ **ANDY'S COMMUNITY CAFÉ Wednesdays and Thursdays, 10am-2.30pm (during term times)** | Offers a range of superb barista coffees, teas and snacks and a "pay as you feel" menu: no fixed prices – just pay what you can afford (or nothing if you're feeling the pinch), so no one goes hungry. Toddler-friendly play space with train track, books and toys, free Wi-Fi, comfy sofas or tables to work from, dog friendly. Andy's is on the ground floor at St Andrew's Church, GP Centre, GU21 3LG. Details: www.standrewsgwp.org/andys

■ **CRAFT GROUP Thursdays, 10am-11.30am*** | With a variety of craft activities in Andy's Community Café. Materials provided, all FREE.

■ **ART GROUP Thursdays, 1pm-3pm** | Creativity, conversation and coffee. All abilities welcome. Meet and make friends in Andy's Community Café. Materials provided, all FREE. The event does not take place when the leader is away, so it's recommended you check with the St Andrew's Church office on 01483 723879.

■ **BOAT TRIPS ON THE BASINGSTOKE CANAL**

The Basingstoke Canal Society owns two passenger boats providing pleasure trips on the Basingstoke Canal. Kitty operates from Town Wharf in Woking, while *John Pinkerton II* operates from Odiham. For details and bookings visit basingstoke-canal.org.uk/boat-trips

■ **THE LIGHTBOX – Tuesdays to Sundays, times vary (closed Mondays and Bank Holidays)** | Art exhibitions (changed regularly), Woking's Story (museum) plus workshops for adults and for families with young children. For full details of current exhibitions and events visit thelightbox.org.uk or call 01483 737800.

■ **WOKING REPAIR CAFE operated by Woking Environment Action (WEAct).** | Volunteers offer free repairs for small electricals/mechanicals, battery-operated clocks, ceramics, small items of furniture, toys, computers, garden tools, clothing and textiles. Donations welcome to help cover running costs. Only items that can be carried by one person will be accepted. No petrol-driven items for safety reasons. If possible, email beforehand with details of what you wish to bring: wookingrepaircafe@gmail.com. Open from 10am with last entry at 12.30pm, monthly on Saturdays as follows: **13th September** at Trinity Methodist Church GU21 4LH; **11th October** at Andy's Community Café, St Andrew's Church, Goldsworth Park GU21 3LG; **8th November** at St Mary's Community Centre Byfleet KT14 7LZ. WEAct website: wookingenvironmentaction.com

Diary Dates

September

■ **WEDNESDAY 3 SEPTEMBER Hearing aid clinic: drop in from 1pm-3pm** | NHS hearing aid general maintenance including cleaning retubing, general advice and free NHS batteries. St Andrew's Church, GP Centre. Free service run by NHS-trained volunteers. For details visit www.standrewsgwp.org/hearing

■ **FRIDAY 5 SEPTEMBER Trefoil Guild, 7.30pm-9.30pm** | Monthly meeting for current and past Guiders who enjoy meeting like-minded folk. The Generation Centre, GP Centre, Denton Way.

■ **SATURDAY 6 SEPTEMBER Woking Borough Council Councillors Surgery 11am-12pm** | Meet your local councillors and your MP Will Forster in Quackers Café, Wishbone Way, Woking GU21 3RT.

■ **TUESDAY 9 SEPTEMBER Sacred Songs 11am-11.45am** | We'll sing a popular hymn, explore the story behind it and the meaning behind the words. There will also be time to chat. St Andrew's Church, GP Centre. For more information or to express an interest, email community@standrewsgwp.org or call the church office on 01483 723879.

■ **SATURDAY 13 SEPTEMBER Indoor Car Boot Table Top Sale 8.00am (sellers 7.00am)-12 noon** | Organised by Goldsworth Scouts. The Generation Centre, off Denton Way, Goldsworth Park GU21 3LG. Contact Akela on 07762 935300 to reserve your table.

■ **SUNDAY 21 SEPTEMBER Messy Church, 3pm-5pm** | Join us for fun, crafts, games, songs and food. Aimed at families with children aged 4-10 (primary school age), but older/younger siblings are welcome. St Andrew's Church, GP Centre.

October

■ **WEDNESDAY 1 OCTOBER Hearing aid clinic: drop in from 1pm-3pm** | NHS hearing aid general maintenance including cleaning retubing, general advice and free NHS batteries. St Andrew's Church, GP Centre. Free service run by NHS-trained volunteers. For details visit www.standrewsgwp.org/hearing

■ **FRIDAY 3 OCTOBER Trefoil Guild, 7.30pm-9.30pm** | Monthly meeting for current and past Guiders who enjoy meeting like-minded folk. The Generation Centre, GP Centre, Denton Way.

■ **SATURDAY 4 OCTOBER Woking Borough Council Councillors Surgery 11am-12pm** | Meet your local councillors and your MP Will Forster in Quackers Café, Wishbone Way, Woking GU21 3RT.

■ **SATURDAY 4 OCTOBER Andy's 'Out of Hours', 7.30pm-10pm** | Live music and entertainment in the comfort of Andy's Community Café, with licensed bar and food. Tickets FREE (donations accepted) but book here: tinyurl.com/andysooh

■ **FRIDAY 10 OCTOBER Seniors' Brunch, 12pm-2pm** | Free (donations accepted). Guest speaker to be announced. In Andy's Community Café (within St Andrew's Church). Booking essential: please call 01483 727834 or email pastoral@standrewsgwp.org

■ **SATURDAY 11 OCTOBER Repair Café, 10am-1pm (last entry 12.30pm)** | At Andy's Community Café in St Andrew's Church. See details under "Regular events" (above).

■ **TUESDAY 14 OCTOBER Sacred Songs 11am-11.45am** | We'll sing a popular hymn, explore the story behind it and the meaning behind the words. There will also be time to chat. St Andrew's Church, GP Centre. For more information or to express an interest, email community@standrewsgwp.org or call the church office on 01483 723879.

■ **SATURDAY 25 OCTOBER Community Litter Pick, 2pm** | Meet at the car park Wishbone Way. All equipment provided. All welcome but children must be accompanied by an adult. Any questions contact editor@ourgoldsworthpark.org.uk

■ **FRIDAY 31 OCTOBER Light Party, 4pm-5.30pm** | Games, crafts and food. Aimed at families with children aged 4-10 (primary school age), but older/younger siblings are welcome). St Andrew's Church, GP Centre. Booking required: email office@standrewsgwp.org or call 01483 723879.

November

■ **SATURDAY 1 NOVEMBER Woking Borough Council Councillors Surgery 11am-12pm** | Meet your local councillors and your MP Will Forster in Quackers Café, Wishbone Way, Woking GU21 3RT.

■ **WEDNESDAY 5 NOVEMBER Hearing aid clinic: drop in from 1pm-3pm** | NHS hearing aid general maintenance including cleaning retubing, general advice and free NHS batteries. St Andrew's Church, GP Centre. Free service run by NHS-trained volunteers. For details visit www.standrewsgwp.org/hearing

■ **FRIDAY 7 NOVEMBER Trefoil Guild, 7.30pm-9.30pm** | Monthly meeting for current and past Guiders who enjoy meeting like-minded folk. The Generation Centre, GP Centre, Denton Way.

■ **TUESDAY 11 NOVEMBER Sacred Songs 11am-11.45am** | We'll sing a popular hymn, explore the story behind it and the meaning behind the words. There will also be time to chat. St Andrew's Church, GP Centre. For more information or to express an interest, email community@standrewsgwp.org or call the church office on 01483 723879.

■ **WEDNESDAY 19 NOVEMBER GPCA AGM, 7.00pm** | The Lodge, Wishbone Way. All residents are welcome.

■ **SATURDAY 29 NOVEMBER Goldsworth Park Christmas Market, 12pm-4pm** | Games, entertainment, food, market stalls, local charities and more. In and around the Church and the Generation Centre at Goldsworth Park Centre. Hosted by St Andrew's Church in partnership with Goldsworth Park Guides, and supported by the GPCA. Free entry.

■ **SUNDAY 30 NOVEMBER Messy Church, 3pm-5pm** | Join us for fun, crafts, games, songs and food. Aimed at families with children aged 4-10 (primary school age), but older/younger siblings are welcome). St Andrew's Church, GP Centre.

December

■ **MONDAY 1 DECEMBER Seniors' Tea, 2pm-4pm** | Free (donations accepted). Guest speaker to be announced. In Andy's Community Café (within St Andrew's Church). Booking essential: please call 01483 727834 or email pastoral@standrewsgwp.org

■ **WEDNESDAY 3 DECEMBER Hearing aid clinic: drop in from 1pm-3pm** | NHS hearing aid general maintenance including cleaning retubing, general advice and free NHS batteries. St Andrew's Church, GP Centre. Free service run by NHS-trained volunteers. For details visit www.standrewsgwp.org/hearing

■ **FRIDAY 5 DECEMBER Trefoil Guild, 7.30pm-9.30pm** | Monthly meeting for current and past Guiders who enjoy meeting like-minded folk. The Generation Centre, GP Centre, Denton Way.

■ **SATURDAY 6 DECEMBER Woking Borough Council Councillors Surgery 11am-12pm** | Meet your local councillors and your MP Will Forster in Quackers Café, Wishbone Way, Woking GU21 3RT.

■ **SATURDAY 6 DECEMBER Andy's 'Out of Hours', 7.30pm-10pm** | Live music and entertainment in the comfort of Andy's Community Cafe, with licensed bar and food. Tickets FREE (donations accepted) but book here: tinyurl.com/andysooh

Local Organisations in Goldsworth Park

■ GOLDSWORTH PARK GUIDES AND SCOUTS

Meetings are in The Generation Centre at The Goldsworth Park Community & Shopping Centre.

GUIDES: Rainbows (ages 5-7) – Monday, Tuesday and Friday 4.45pm to 5.45pm; Brownies (ages 7-10) – Monday Tuesday and Friday 6pm to 7.30pm; Guides (ages 10+) – Tuesday 7.45pm to 9.15pm. **Contact:** Hannah Lambart on 01483 766001 or email gpbrownies4@hotmail.co.uk

SCOUTS: Beavers (ages 6-8) – Wednesday 5pm to 6pm; Cubs (ages 8-10) – Thursday 5.45pm to 7.15pm; Scouts (ages 10+) – Thursday 7.30pm to 9.00pm. **Contact:** Dave Morris on 07985 684086 or email gsl.gpark@gmx.com. Dave says the group needs extra leaders or helpers so they can accommodate young people on the waiting list: can you help?

■ GOLDSWORTH PARK RANGERS FOOTBALL CLUB

Grassroots football opportunities for boys and girls, based at Goldsworth Park Recreation Ground. Details: visit gprfc.org or email clubsecretary@gprfc.org

■ SEA CADETS WOKING

Through activities and adventures, we learn teamwork, respect, loyalty, self-confidence, commitment, self-discipline, honesty and how to be the best version of ourselves. We meet at the Dianthus Building, Wishbone Way GU21 3RT. Sea Cadets (ages 12-18) – Mondays and Thursdays 7pm-9pm; Junior Cadets (ages 10-12) – Mondays 7pm-9pm; Royal Marines Cadets (13-18) – Mondays and Thursdays 7pm-9pm. Details: visit www.sea-cadets.org/woking or email info@wokingseacadets.org.uk or call 01483 901909.

■ WOKING HOCKEY CLUB

With many teams (men's, ladies, mixed, youth and touring sides), plus "back to hockey" sessions, the clubs offer hockey to players of any ability. Details: www.wokinghc.com or email secretary@wokinghc.com

■ GOLDSWORTH PARK BADMINTON CLUB

The club seeks new members who currently play or are thinking of restarting badminton. Meets in Woking High School Sports Hall on Saturdays 1pm-3pm. The club has a friendly but strong level of badminton using feather shuttles whilst enjoying the fun and social side. Details email paulrussell01@aol.com

■ FOSTERS BADMINTON CLUB

A mixed, friendly and competitive club for those looking for competitive badminton. The club plays with feather shuttles and has men's and mixed league teams. Meets in Woking High School Sports Centre on Monday evenings 7pm to 9pm. Details email dave@daveglynnmanagement.co.uk

■ ST ANDREW'S CHURCH

Goldsworth Park's friendly, community-focussed parish church, at the heart of Goldsworth Park near the shops. Our church family is made up of all ages and backgrounds from a variety of nationalities and cultures. We'd love to welcome you at a Sunday service in our upstairs Worship Area (we have a lift!) or during the week at our many events downstairs in Andy's Community Café. Details: www.standrewsgwp.org email office@standrewsgwp.org or call 01483 723879.

■ SALVATION ARMY

We invite you to join with us on Sundays at 11am for our worship meeting. In addition, we offer many programmes at our Community Church throughout the week so please know that you're welcome at The Salvation Army Community Church, Sythwood, Woking GU21 3BE. For details visit www.salvationarmy.org.uk/woking or email woking@salvationarmy.org.uk or call 01483 793704.

■ LAKESIDE CHRISTIAN FELLOWSHIP

Meets Sundays at 10am for worship, teaching and Holy Communion in the Dianthus Building in Wishbone Way, GU21 3RT. Other meetings during the week include Holy Communion, prayer and house groups. For more information visit lcfwoking.wixsite.com/lakeside or email lcf_woking@hotmail.co.uk or call 01483 870045.

■ RADIO SAILING WOKING

We sail model boats on Goldsworth Park Lake on Sundays from 11am (weather permitting), sometimes Wednesday and Fridays, plus competitive meetings (listed on web site). During the other "free" weekends we are more able to answer public questions and let people have a go. Although primarily a sailing group the club is open to models of all types, excluding fast electric and steam. For details see www.rudiosailingwoking.uk

■ GOLDSWORTH CARE

A good neighbour scheme offering help to residents who find it difficult to get around. Volunteer drivers take clients to health centres, shops etc and wait to take them home again. They may also do shopping for housebound people. For details, registration and to request a pick-up call 07751 801587, Monday-Friday, 10am-12 noon.

■ WOKING SHOPMOBILITY

Hires out mobility scooters, power chairs and manual wheelchairs to help access Woking town centre shops and amenities. Also rents out manual wheelchairs and travel scooters for holidays and day trips. Blue Badge not necessary. Details: call 01483 776612, visit wokingshopmobility.co.uk or email wokingshopmobility@gmail.com



Seymours

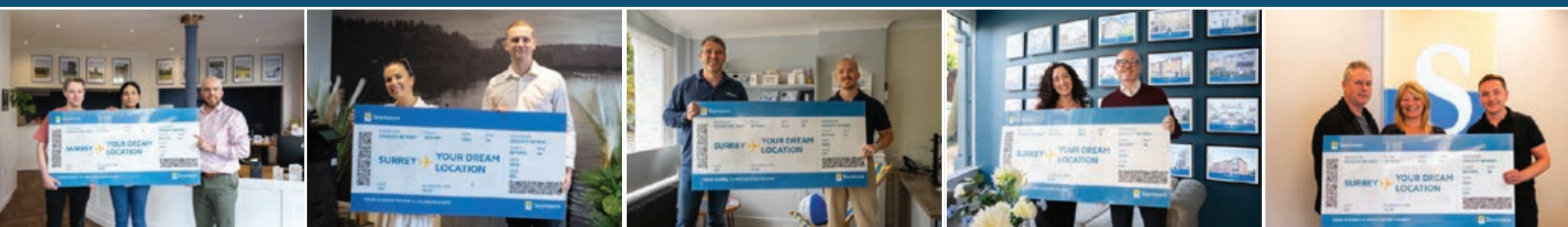
YOUR CHANCE TO WIN A £10,000 HOLIDAY

There's still time to enter—sell or let your home with Seymours for a chance to win!



Not only that — there are still £500 getaway vouchers waiting to be won! We've already had plenty of lucky winners and you could be next! Whether you're upsizing, downsizing, or hoping to be in your new home by Christmas, we're here to help.

Get started today with a free, no-obligation valuation, or scan the QR code for an instant online valuation. Your holiday getaway could be just one call away!



Zo Khan
Partner



Lisa Athron
Partner

Woking Sales
01483 757700
sales@seymours-woking.co.uk

Woking Lettings
01483 741300
lettings@seymours-woking.co.uk